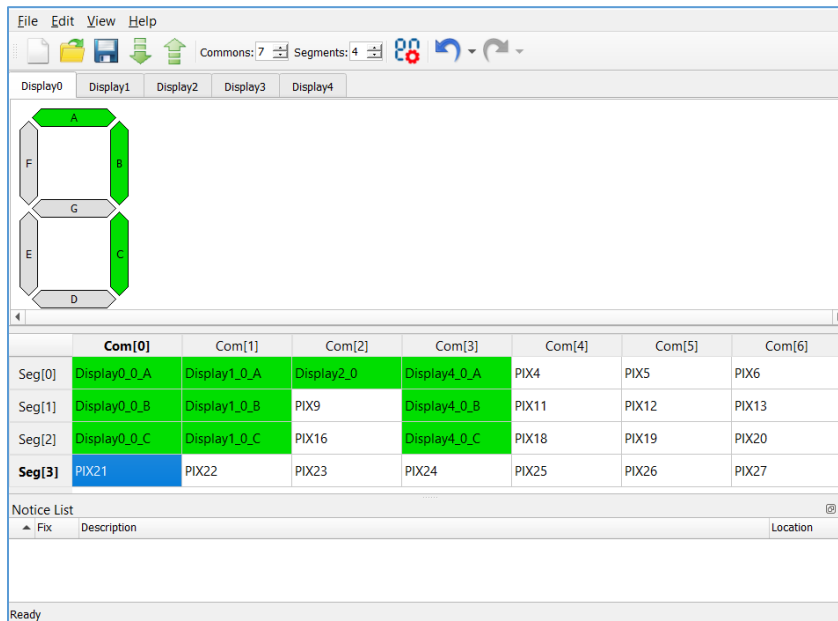


Overview

The Segment LCD (SegLCD) Configurator is part of the ModusToolbox software. It is a stand-alone tool used to generate display structures for the [SegLCD Driver](#). The tool is supported on Windows, Linux, and macOS.



The SegLCD Configurator supports the following types of displays:

- bar graph (1pixel per symbol)
- 7-segment
- 14-segment
- 16-segment
- 5x8 dot matrix (40 pixels per symbol)

See the [Display Editor](#) section for more information about display types.

Supported Software

| Name | Version | Link |
|--|---------|---|
| Cypress PSoC 6 Peripheral Driver Library | 1.3.1 | https://github.com/cypresssemiconductorco/psoc6pdl |

Definitions

- **LCD** – Liquid Crystal Display
- **Glass** – An LCD glass with one or more displays (for example, one 7-segment display and one bar-graph display).

- **Display** – A block of symbols that have the same type on an LCD glass to indicate a multi-digital number or character string.
- **Symbol** – A block of pixels on an LCD glass to indicate a single digit or character.
- **Pixel** – A basic displaying item. This can be a segment of a 7-segment symbol (thus called a "segment"), a pixel of a dot-matrix display, or a stand-alone arbitrarily shaped display element. Each pixel has a unique set of common and segment lines within one LCD glass.
- **Common line (Com/COM for short)** – A common wire/signal from the PSoC MCU to the LCD glass. In the SegLCD Configurator, this is represented as a column in the [Mapping Table](#).
- **Segment line (Seg/SEG for short)** – A segment wire/signal from the PSoC MCU to the LCD glass. In the SegLCD Configurator, this is represented as a row in the [Mapping Table](#).

Launch the SegLCD Configurator

You can launch the SegLCD Configurator GUI with or without the Eclipse IDE for ModusToolbox or from the Device Configurator. You can also run the tool from the command line. Then, you can either use the generated source with an Eclipse IDE application, or use it in any software environment you choose.

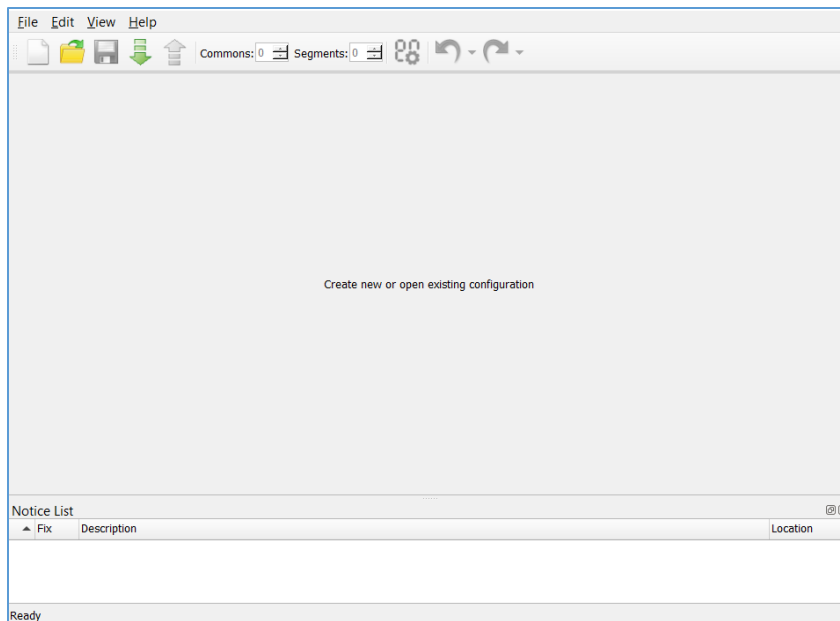
Launch without the Eclipse IDE

To run the SegLCD Configurator GUI without the Eclipse IDE, navigate to the install location and run the executable. On Windows, the default install location for the SegLCD Configurator is:

```
<install_dir>/tools_<version>/seglcd-configurator
```

For other operating systems, the installation directory will vary, based on how the software was installed.

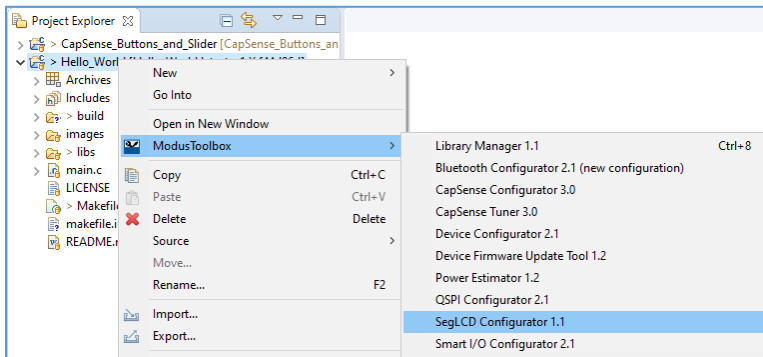
The SegLCD Configurator GUI opens with an untitled configuration file.



You must create a new *.cyseglcd file to save configuration information, or open an existing file.

Launch with the Eclipse IDE

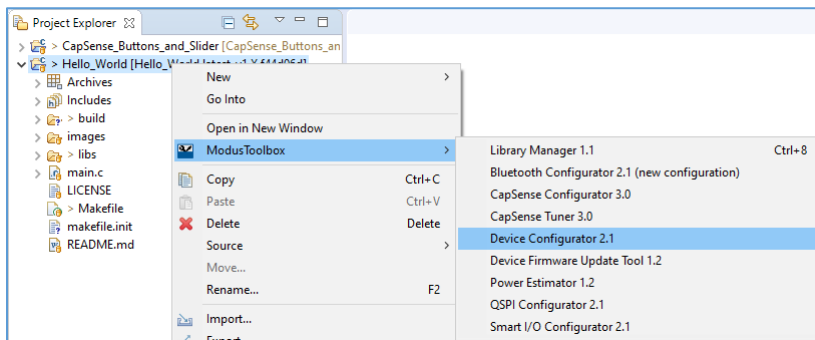
If your Eclipse IDE application already includes a *design.cyseglcd* file in the Board Support Package (BSP), right-click on a project in the IDE Project Explorer, and select **ModusToolbox > SegLCD Configurator** to open the tool.



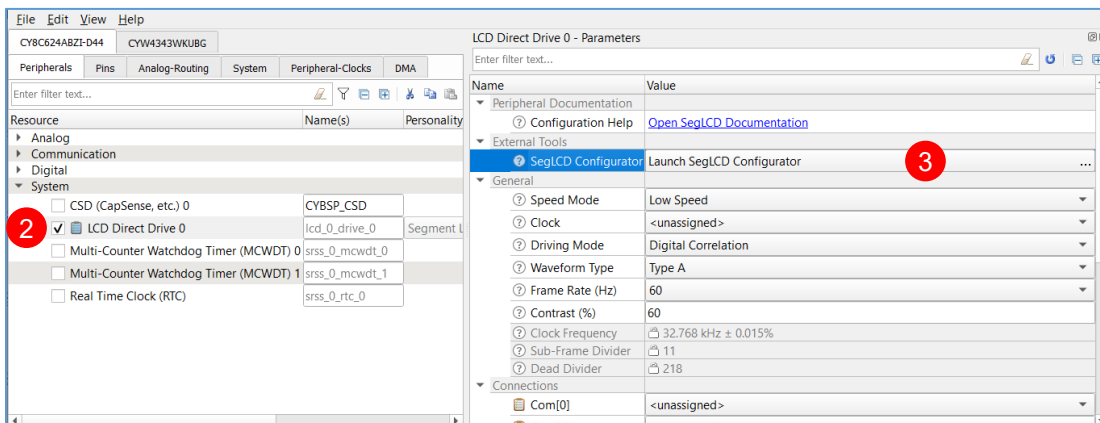
From the Device Configurator

If your Eclipse IDE application does **not** include a *design.cyseglcd* file:

1. Open the Device Configurator.



2. On the **Peripherals** tab, enable the **LCD Direct Drive** resource.
3. On the Parameters pane, click the **Launch SegLCD Configurator** button to launch the SegLCD Configurator.



The Device Configurator displays information based on the *design.modus* file and various enabled personalities. When you open the SegLCD Configurator from the Device Configurator, information about the device and the application is passed to the SegLCD Configurator. When you save changes in the SegLCD Configurator, it updates/generates a *design.cyseglcd* configuration file in the same location as the *design.modus* file. All BSP configurators also generate/update firmware in the BSP's "GeneratedSource" folder.

From the Command Line

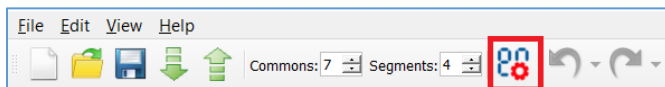
You can run the `seglcd-configurator` executable from the command line. However, there are only a few reasons to do this in practice. There is also a `seglcd-configurator-cli` executable which re-generates source code based on the latest configuration settings from a command-line prompt or from within batch files or shell scripts. The exit code for the `seglcd-configurator-cli` executable is zero if the operation is successful, or non-zero if the operation encounters an error. To use the `seglcd-configurator-cli` executable, provide at least the `--config` argument with a path to the configuration file.

For more information about command-line options, run the `seglcd-configurator` or `seglcd-configurator-cli` executable using the `-h` option.

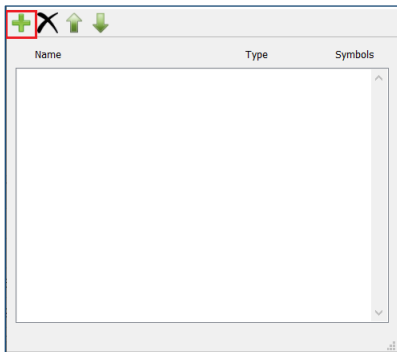
Quick Start

This section provides a simple workflow for how to use the tool.

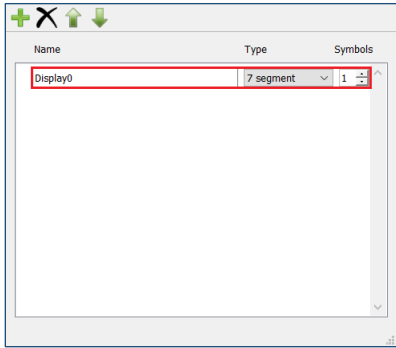
1. [Launch the SegLCD configurator.](#)
2. Click the **Edit Displays** button on the toolbar to open the **Display Editor** dialog.



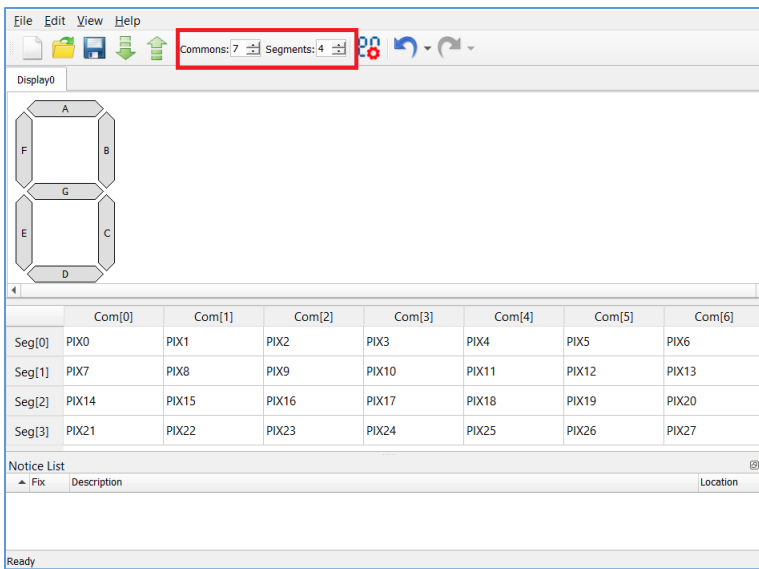
3. On the Display Editor dialog, click the **Add New Display** button.



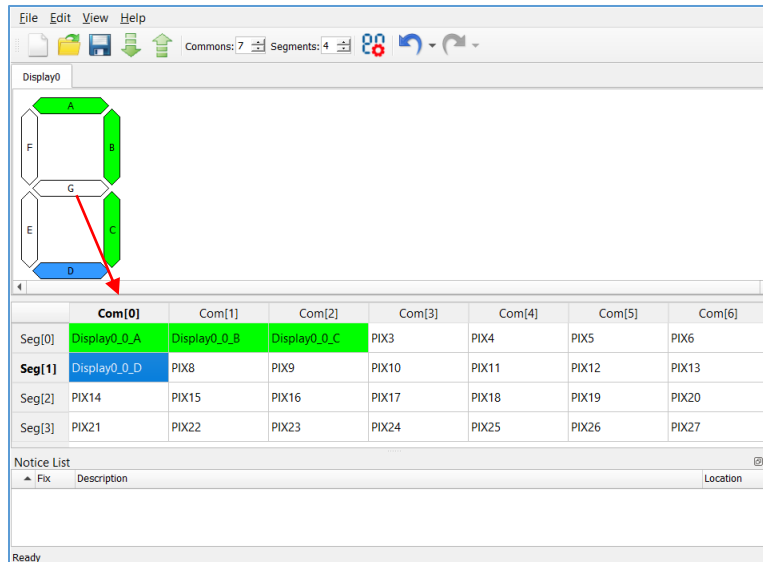
4. A new row appears to specify the display **Name**, select the **Type**, and specify the number of **Symbols**. See the [Display Editor](#) section for more information.



5. Close the dialog by clicking the **X** button or pressing [**Esc**].
6. On the toolbar, specify the number of **Common** and **Segment** LCD connections corresponding to the mapping table dimensions. See the [Mapping Table](#) section for more information.



- On the display view, left-click and hold a pixel of the symbol, drag it onto the mapping table below the display view, and release the mouse button on the desired cell. See the [Mapping Table](#) section for more information.



- Repeat this process for all display pixels.
- Save the configuration.

See [Code Generation](#).

Code Generation

The SegLCD Configurator generates code in the “GeneratedSource” directory in your BSP, or in the location you specified for a non-Eclipse IDE application. That directory contains the source (.c) and header (.h) files with relevant firmware used by the SegLCD driver. The configuration is stored in the *design.cyseglcd* file next to the *design.modus* file.

After saving the configuration and closing the SegLCD Configurator, complete the configuration:

- If you launched the SegLCD Configurator from the Device Configurator, assign all the unassigned LCD terminals to the GPIO pins in the Device Configurator.
- If you launched the SegLCD Configurator independently, edit the generated code to provide additional LCD terminal definitions for the display array.

Menus

The SegLCD Configurator contains the following menus:

- File**
 - New** – Creates a new file with new configuration.
 - Open** – Opens and loads an existing file.
 - Save** – Saves the existing file.
 - Save as** – Saves the existing file under a different name.
 - Import** – Imports a specified configuration file.
 - Export** – Exports the current configuration file into a specified file.

- Exit** – Closes the tool.
- Edit**
 - Undo** – Undoes the last action or sequence of actions.
 - Redo** – Redoes the undone action or sequence of undone actions.
 - Edit displays** – Opens the [Display Editor](#) dialog.
- View**
 - Notice List** – Shows/hides the [Notice List pane](#). The pane is shown by default.
 - Toolbar** – Shows/hides the [toolbar](#).
 - Reset View** – Resets the view to the default.
- Help**
 - View Help** – Opens this document.
 - About Segment LCD Configurator** – Opens the About box for version information.

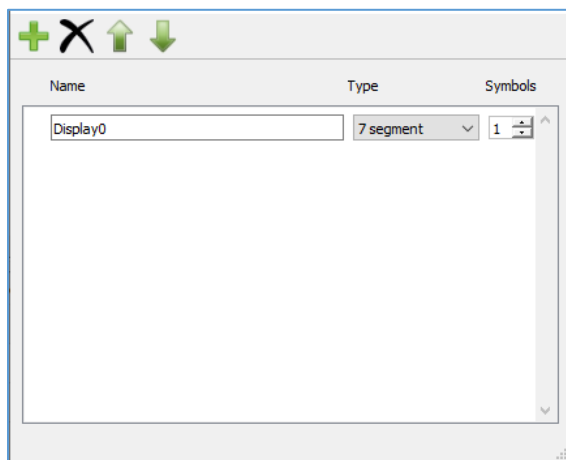
Toolbar

The toolbar contains the same commands as the [File menu](#). The toolbar also contains:

- Commons** – Specifies the number of common LCD connections represented as columns on the mapping table.
- Segments** – Specifies the number of segment LCD connections represented as rows on the mapping table.
- Edit displays** – Opens the Display Editor dialog.
- Undo** – Undoes the last action or sequence of actions.
- Redo** – Redoes the undone action or sequence of undone actions.

Display Editor

Use this dialog to create and configure displays.



You can open the Display Editor dialog using any of the following ways:

- Click the Edit button on the menu.
- Click the Edit Displays button on the toolbar




- Keyboard shortcut applicable to the OS.

You can close it multiple ways as well:

- Click the X button.
- Keyboard shortcut applicable to the OS.

Display Editor Toolbar

This dialog contains the following toolbar commands:

-  **Add New Display** – Adds a display row to the dialog and a tab to the [Display View](#).
-  **Delete Display** – Deletes the selected display row from the dialog and removes the tab from the Display View.
-  **Move Up/Down** – Moves the selected display row up or down in the dialog, and accordingly rearranges the order of the tabs in the Display View.

Display Row

Use the fields in the display row to enter the display **Name**, select the **Type**, and specify the number of **Symbols**. Use the [Tab] key to switch between the fields, as needed, or select the field using the mouse.

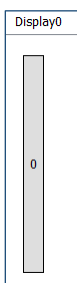
Name

Shows the names of configured displays: Display0, Display1, etc. A name may contain upper or lowercase letters, underscores, and digits. However, the first character cannot be a digit.

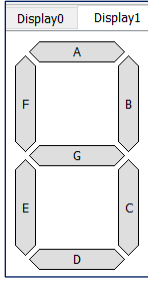
Type

Shows the types of displays to select from the pull-down menu:

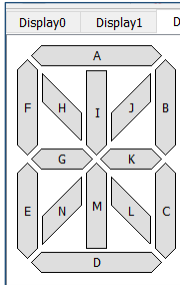
- **Bar/Dial Graph** – Consists of two or more pixels. The number of pixels (the bar graph length) is defined by the [Symbols](#) parameter. On the [firmware layer](#), this type is considered as a non-symbolic display with one pixel per symbol. It supports up to 255 segments.



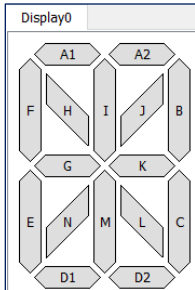
- **7-Segment Display** – Consists of 7 segments per symbol.



- **14-Segment Display** – Consists of 14 segments per symbol.

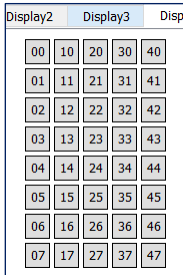


- **16-Segment Display** – Consists of 16 segments per symbol.



Note A decimal point/apostrophe/colon, or any other sign besides the segment display symbol, is not supported as a part of the symbol itself. These signs can be treated as stand-alone pixels.

- **Matrix Display** – For a symbol sized 5 (width) x 8 (height) pixels.

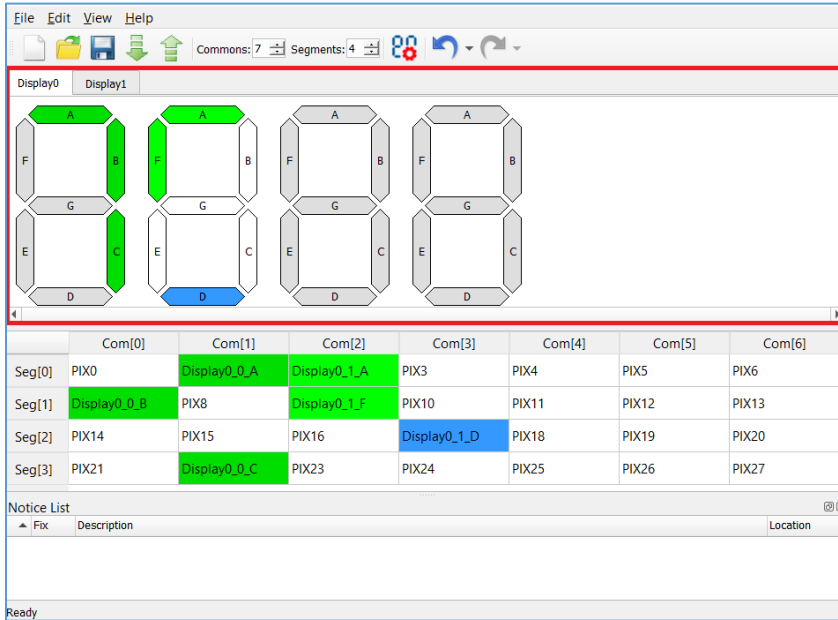


Symbols

The number of display types to include on the corresponding [Display View](#) tab.

Display View

The display view contains one or more tabs that show display types configured in the [Display Editor](#).



A display symbol contains a set of pixels named A, B, C... (or 00, 01, 02 for the matrix display type) by default. The pixel names correspond to cell names in the [Mapping Table](#) (for a pixel placed on the mapping table). The pixels have colors showing the connectivity status:

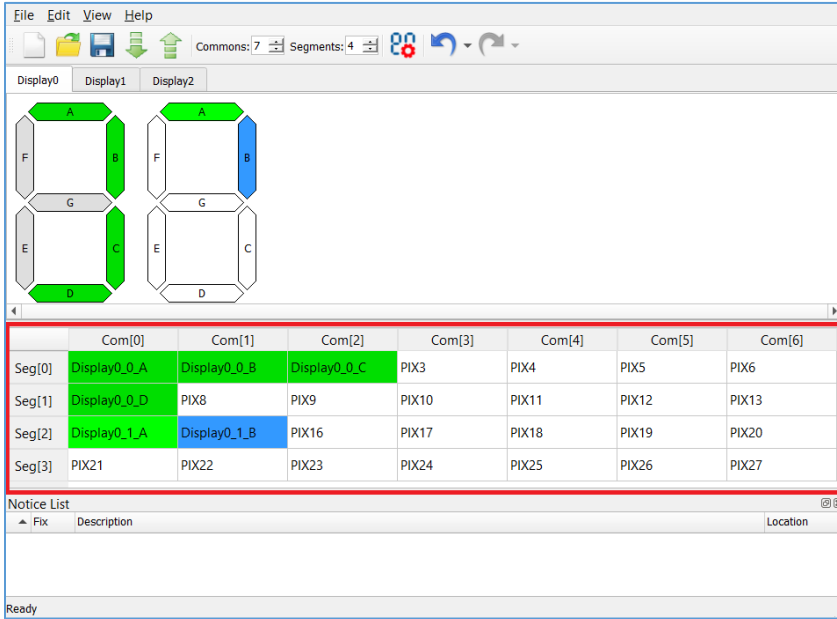
- **Light Green** – The pixel is connected, and the symbol is currently selected.
- **Dark Green** – The pixel is connected, and the symbol is currently not selected.
- **Blue** – The pixel is currently selected (connected or not).
- **White** – The pixel is not connected, and the symbol is currently selected.
- **Grey** – The pixel is not connected, and the symbol is not currently selected.

Notes

- The same colors are used for pixels in the mapping table, when applicable.
- In this document, symbol segments for displays (for example, 7-segment, 14-segment, etc.), are called “pixels” so that they are not confused with segment LCD connections (physical wires) represented as rows of the mapping table (see [Definitions](#)).

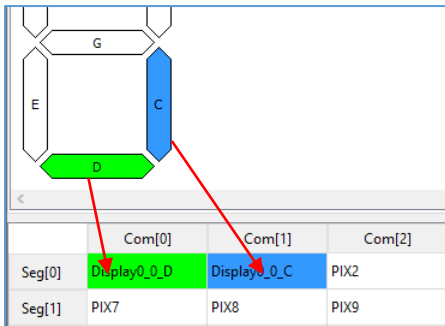
Mapping Table

The mapping table (below the [Display View](#)) is a grid control where columns represent Commons lines, rows represent Segments lines, and cells represent pixels. Each pixel is determined by a unique pair of common and segment lines.

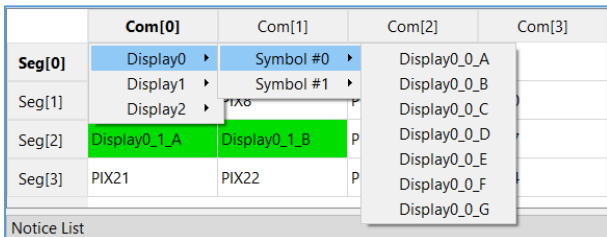


Connect/Disconnect Display Pixel

To connect a display pixel to a specific Common and Segment, drag a pixel from the [Display View](#) to the mapping table.



You can also right-click on the cell to access the context menu and select the desired display, symbol, and pixel.



To disconnect a display pixel, select a pixel in the table and drag the selected pixel outside the mapping table. You can also simply press **Delete**.

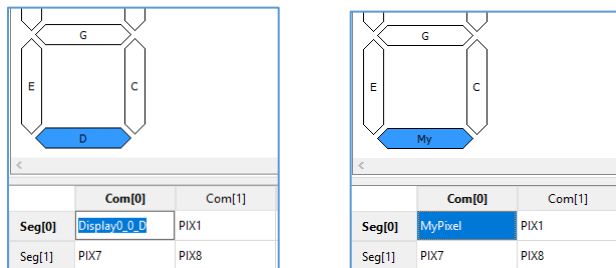
Change Pixel Name

By default, pixels connected to Commons and Segments in the mapping table have the following name format:

<display name>_<symbol number>_<pixel name>

To rename a pixel, double-click it in the mapping table to select it, and then replace the text. The name can contain uppercase and lowercase letters, underscores, and digits. However, the first character cannot be a digit.

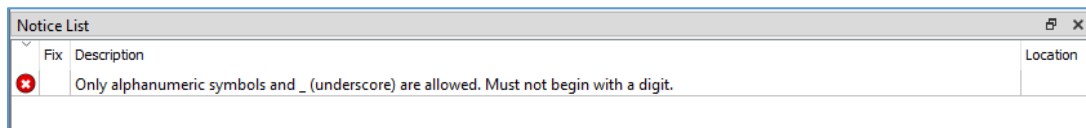
To return a pixel name to its default value, delete the name and press **[Enter]**.



Once the name has been changed, only the first two characters of the pixel name show in the display name.

Notice List

The Notice List pane combines notices (errors, warnings, tasks, and notes) from many places in the configuration into a centralized list. If a notice shows a location, double-click the entry to show the error or warning.



For more information, refer to the *Device Configurator Guide*.

References

Refer to the following documents for more information, as needed:

- Device Configurator Guide
- Eclipse IDE for ModusToolbox User Guide
- PDL Reference Guide
- Device Datasheets
- Device Technical Reference Manuals

Version Changes

This section lists and describes the changes for each version of this tool.

| Version | Change Descriptions |
|---------|--------------------------------|
| 1.0 | New tool. |
| 1.1 | Added the Undo / Redo feature. |

© Cypress Semiconductor Corporation, 2019-2020. This document is the property of Cypress Semiconductor Corporation and its subsidiaries, including Spansion LLC ("Cypress"). This document, including any software or firmware included or referenced in this document ("Software"), is owned by Cypress under the intellectual property laws and treaties of the United States and other countries worldwide. Cypress reserves all rights under such laws and treaties and does not, except as specifically stated in this paragraph, grant any license under its patents, copyrights, trademarks, or other intellectual property rights. If the Software is not accompanied by a license agreement and you do not otherwise have a written agreement with Cypress governing the use of the Software, then Cypress hereby grants you a personal, non-exclusive, nontransferable license (without the right to sublicense) (1) under its copyright rights in the Software (a) for Software provided in source code form, to modify and reproduce the Software solely for use with Cypress hardware products, only internally within your organization, and (b) to distribute the Software in binary code form externally to end users (either directly or indirectly through resellers and distributors), solely for use on Cypress hardware product units, and (2) under those claims of Cypress's patents that are infringed by the Software (as provided by Cypress, unmodified) to make, use, distribute, and import the Software solely for use with Cypress hardware products. Any other use, reproduction, modification, translation, or compilation of the Software is prohibited.

TO THE EXTENT PERMITTED BY APPLICABLE LAW, CYPRESS MAKES NO WARRANTY OF ANY KIND, EXPRESS OR IMPLIED, WITH REGARD TO THIS DOCUMENT OR ANY SOFTWARE OR ACCOMPANYING HARDWARE, INCLUDING, BUT NOT LIMITED TO, THE IMPLIED WARRANTIES OF MERCHANTABILITY AND FITNESS FOR A PARTICULAR PURPOSE. To the extent permitted by applicable law, Cypress reserves the right to make changes to this document without further notice. Cypress does not assume any liability arising out of the application or use of any product or circuit described in this document. Any information provided in this document, including any sample design information or programming code, is provided only for reference purposes. It is the responsibility of the user of this document to properly design, program, and test the functionality and safety of any application made of this information and any resulting product. Cypress products are not designed, intended, or authorized for use as critical components in systems designed or intended for the operation of weapons, weapons systems, nuclear installations, life-support devices or systems, other medical devices or systems (including resuscitation equipment and surgical implants), pollution control or hazardous substances management, or other uses where the failure of the device or system could cause personal injury, death, or property damage ("Unintended Uses"). A critical component is any component of a device or system whose failure to perform can be reasonably expected to cause the failure of the device or system, or to affect its safety or effectiveness. Cypress is not liable, in whole or in part, and you shall and hereby do release Cypress from any claim, damage, or other liability arising from or related to all Unintended Uses of Cypress products. You shall indemnify and hold Cypress harmless from and against all claims, costs, damages, and other liabilities, including claims for personal injury or death, arising from or related to any Unintended Uses of Cypress products.

Cypress, the Cypress logo, Spansion, the Spansion logo, and combinations thereof, ModusToolbox, WICED, PSoC, CapSense, EZ-USB, F-RAM, and Traveo are trademarks or registered trademarks of Cypress in the United States and other countries. For a more complete list of Cypress trademarks, visit cypress.com. Other names and brands may be claimed as property of their respective owners.