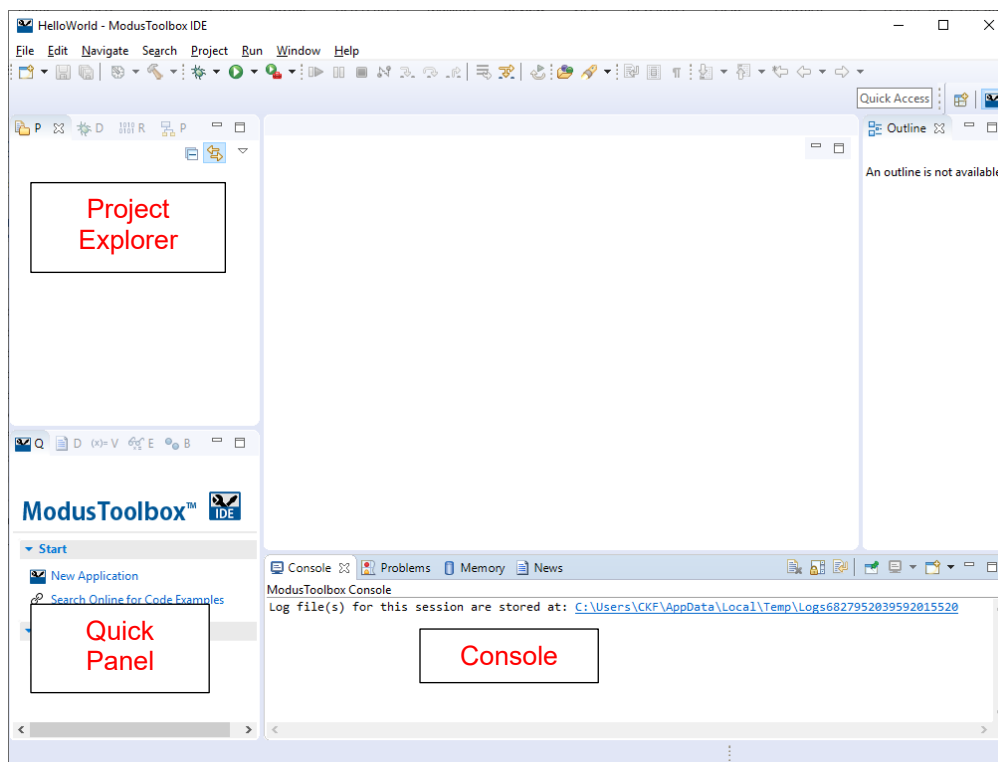


ModusToolbox™ software is a set of tools that support Cypress device configuration and application development. These tools enable you to integrate Cypress devices into your existing development methodology.

This guide provides a quick walkthrough for creating a starter application with the ModusToolbox IDE, as well as programming the application onto a device and debugging the program.

Download/Install/Run ModusToolbox IDE

Refer to the instructions in the [ModusToolbox Installation Guide](#). After you accept the License Agreement, the IDE opens a dialog to specify the workspace. Then, it opens with an empty Project Explorer by default.



This guide focuses on these areas of the IDE:

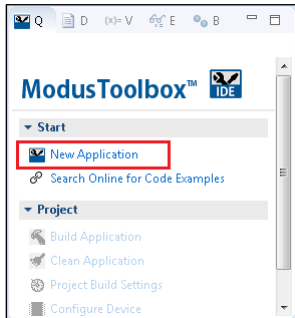
- The **Project Explorer** contains the application folders and files.
- The **Quick Panel** provides links to tool commands and documentation.
- The **Console** displays various messages when updating the application in some way (building, programming, etc.)

Create New Application

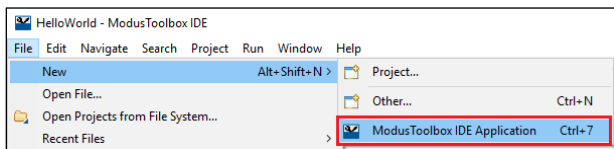
Creating an application includes several steps, as follows:

Step 1: Open New Application Dialog

In the **Quick Panel**, click the “New Application” link.

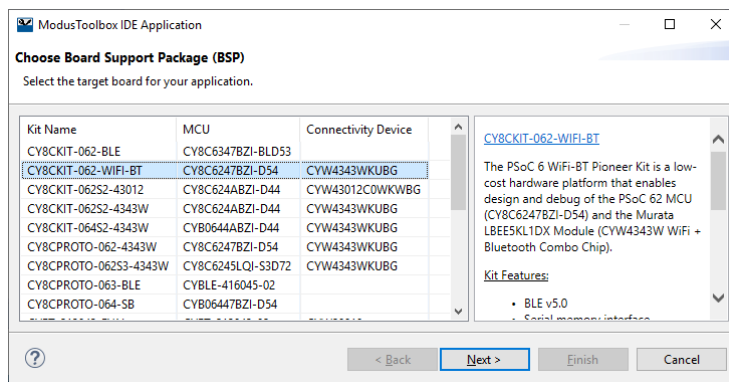


Or, select **File > New > ModusToolbox IDE Application**.



Step 2: Choose Board Support Package (BSP)

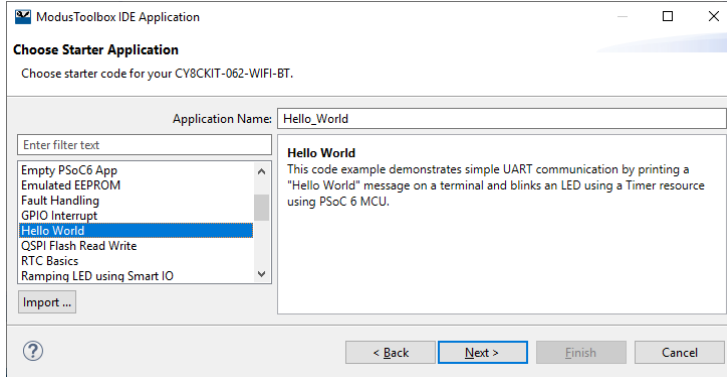
On the ModusToolbox IDE Application dialog, click on the desired board number; see the description for it on the right. For this example, select the **CY8CKIT-062-WIFI-BT** kit. The image below is an example; the precise list of boards available in this version of ModusToolbox will reflect the platforms available for development.



Step 3: Choose Starter Application

Click **Next >** to open the Starter Application page.

The starter applications demonstrate different features available on the kit. For this example, select **Hello World** from the list. This application exercises the PSoC 6 MCU to blink an LED.



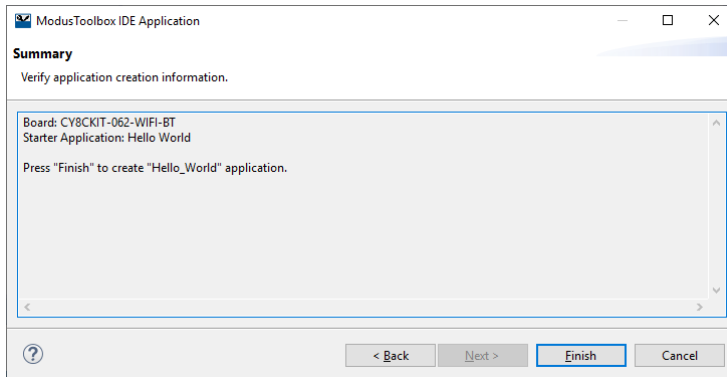
Note The actual application names on your screen might vary.

Type a name for your application or leave the default name. Do not use spaces in the application name. Also, do not use common illegal characters, such as:

* . " \ / \ [] : ; | = ,

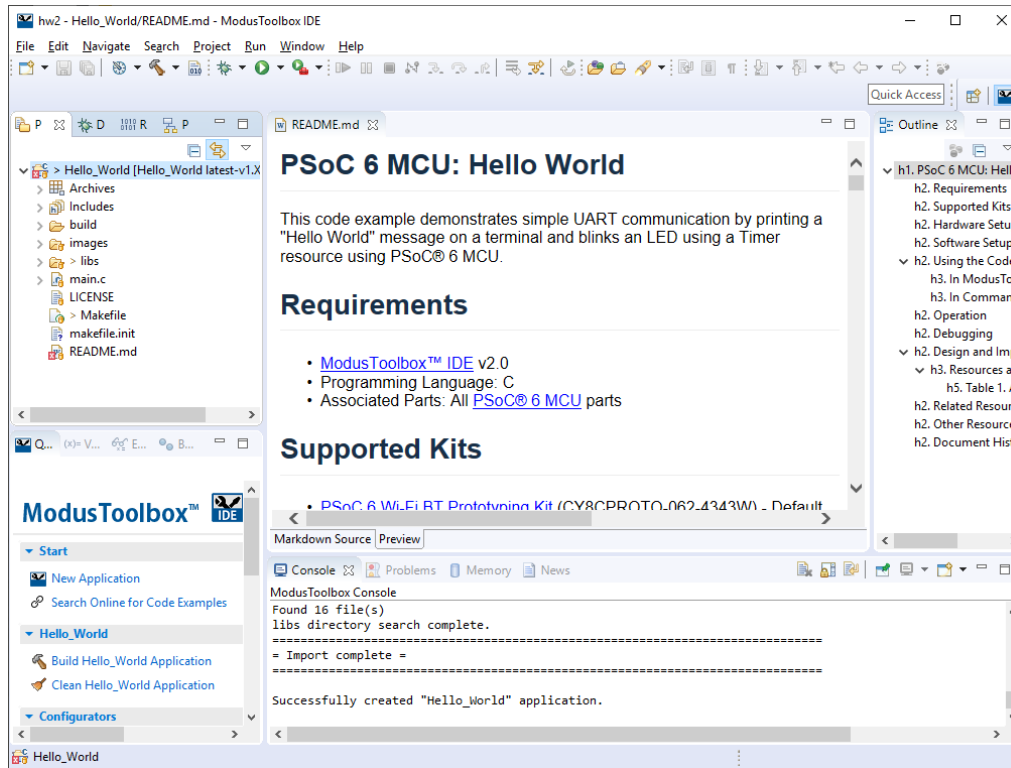
Step 4: Review Summary Details

Click **Next >** to open the Summary page. Review the application options to ensure they are correct.



Step 5: Create Application

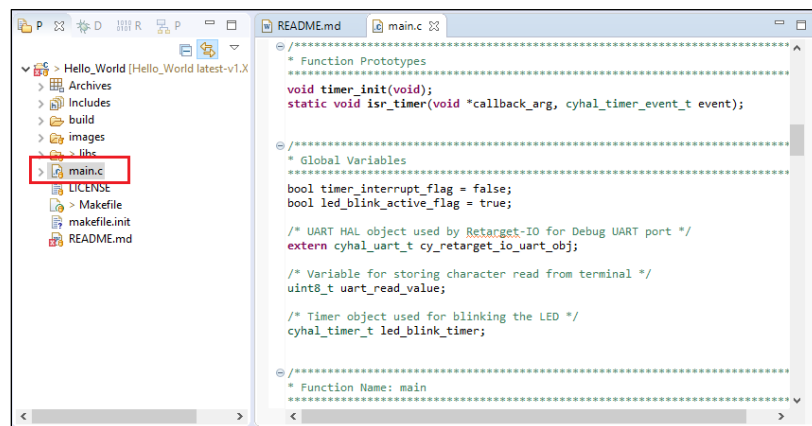
Click **Finish** to start creating the application. The ModusToolbox IDE indicates it is loading the application. After several moments, the application opens with the *Hello_World* project in the Project Explorer, and the *README.md* file opens in the file viewer.



Add/Modify Application Code

Starter applications work as they are, and there is no need to add or modify code. However, if you want to update and change the starter application to do something else, open the appropriate file in the code editor.

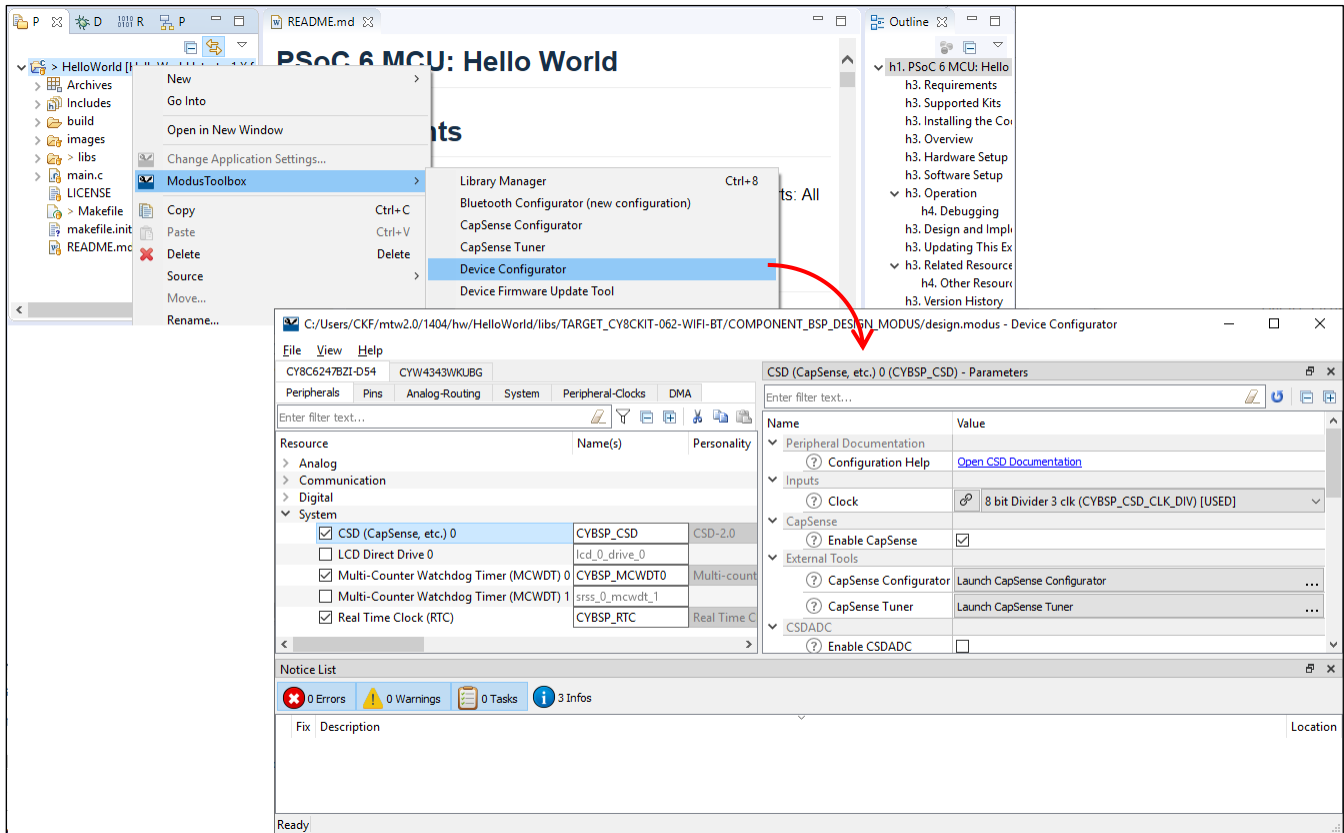
Double-click the *main.c* file to open it.



As you type into the file, an asterisk (*) will appear in the file's tab to indicate changes were made. The **Save/Save As** commands will also become available to select.

Configure Device Resources

To enable and configure peripherals, pins, clocks, etc., open the Device Configurator. Right-click on the project folder and select **ModusToolbox > Device Configurator**.



The Device Configurator provides access to the BSP resources and settings. Each enabled resource contains one or more links to the related API documentation. There are also buttons to open other configurators for CapSense®, QSPI, Smart I/O™, etc.

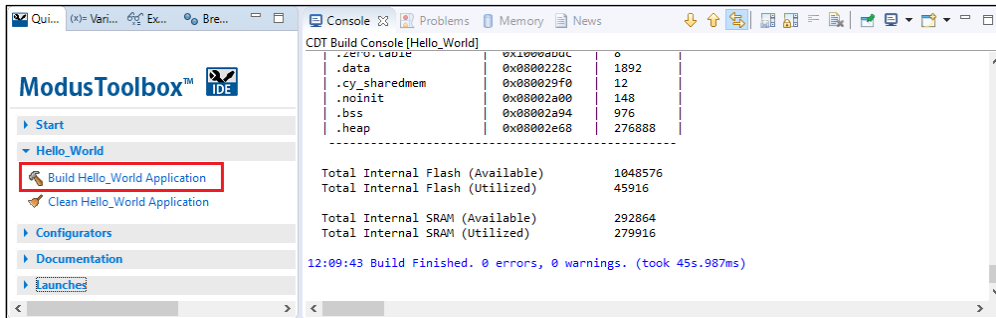
Note The Device Configurator cannot be used to open Library Configurators, such as Bluetooth and USB.

For more information, refer to the *Device Configurator Guide*, available by selecting **View Help** from the tool's **Help** menu.

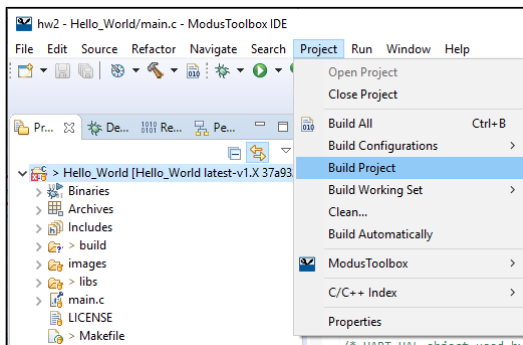
Build the Application

Building the application is not specifically required, because building will be performed as part of the programming and debugging process. However, if you are running the ModusToolbox IDE without any hardware attached, you may wish to build your application to ensure all the code is correct.

In the **Quick Panel**, click the “Build Hello_World Application” link. Build information will display in the Console pane.



If you have the *Hello_World* project selected, you can also select **Build Project** from the **Project** menu or from the right-click menu. The Eclipse menus change based on what you have selected in the Project Explorer.



Program the Device

There are several different “Launch Configurations” for programming and debugging the various development kits and starter applications within the ModusToolbox IDE. These Launch Configurations provide details about how to configure the application. This section provides a brief walkthrough for programming this example. For more details about other Launch Configurations and settings, refer to the [ModusToolbox IDE User Guide](#), “Programming and Debugging” chapter.

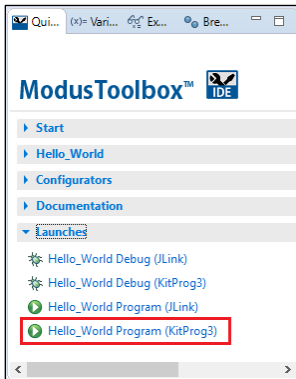
Connect the Kit

Follow the instructions provided with the CY8CKIT-062-WIFI-BT kit to connect it to the PC with the USB cable.

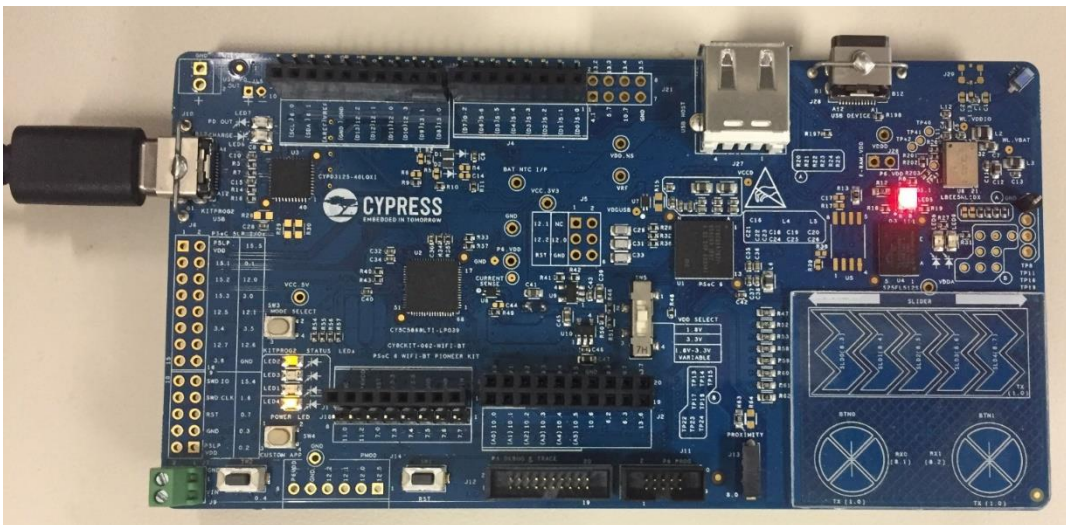
Note This kit’s firmware is set to KitProg2 by default. To use this kit with the ModusToolbox software, you must upgrade the firmware to KitProg3. Refer to the [KitProg3 User Guide](#) for more details.

Program

In the Project Explorer, select the *Hello_World* application. Then, in the **Quick Panel**, click the “Hello_World Program (KitProg3)” link.



If needed, the IDE builds the application and messages display in the Console. If the build is successful, device programming starts immediately. If there are build errors, then error messages will indicate as such. When complete, the LED will start blinking.



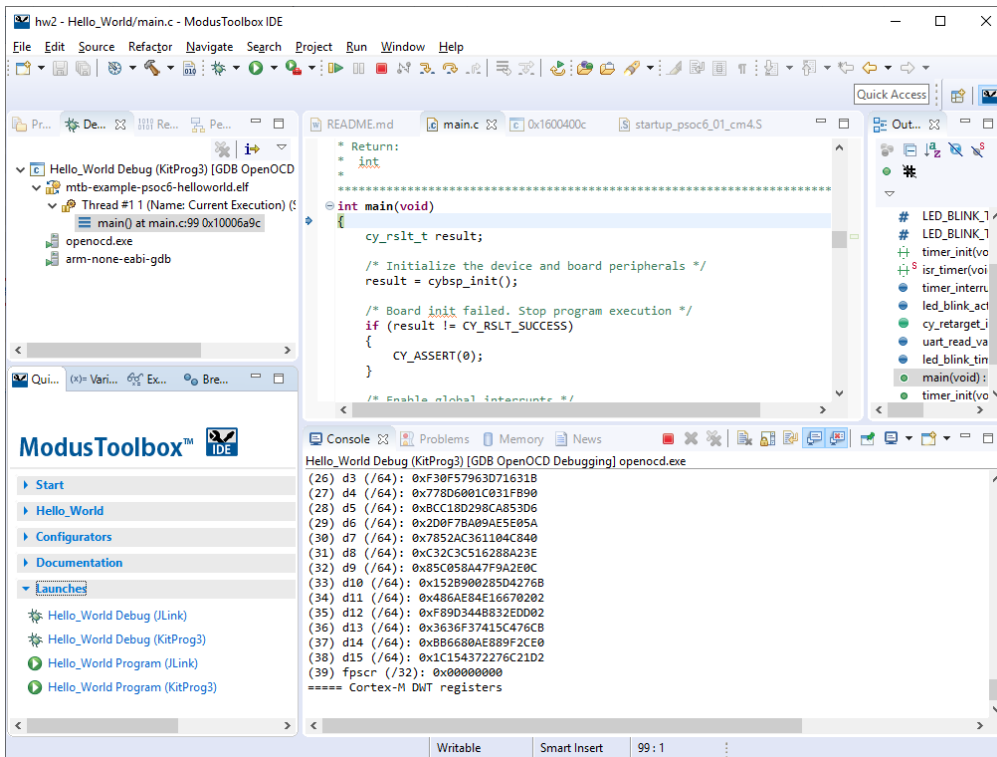
Debug the Program

As mentioned under the [Program the Device](#) section in this document, there are many different Launch Configurations for different kits and applications. This section provides a brief walkthrough for debugging this example. For more details about other Launch Configurations and settings, refer to the [ModusToolbox IDE User Guide](#), “Program and Debug Applications” chapter.

In the Project Explorer, select the *Hello_World* application. Then, in the **Quick Panel**, click the “Hello_World Debug (KitProg3)” link under **Launches**.



If needed, the IDE builds the application and messages display in the Console. If the build is successful, the IDE switches to debug mode automatically. If there are build errors, then error messages will indicate as such.



Next Steps

Refer to the [ModusToolbox IDE User Guide](#) for information such as configuring pins, application settings, peripheral options, as well as adding/removing software components.

Refer to the [Eclipse Workbench User Guide](#) for information about the Eclipse environment. Cypress also provides the [Eclipsis IDE Survival Guide](#).

© Cypress Semiconductor Corporation, 2017-2019. This document is the property of Cypress Semiconductor Corporation and its subsidiaries, including Spansion LLC ("Cypress"). This document, including any software or firmware included or referenced in this document ("Software"), is owned by Cypress under the intellectual property laws and treaties of the United States and other countries worldwide. Cypress reserves all rights under such laws and treaties and does not, except as specifically stated in this paragraph, grant any license under its patents, copyrights, trademarks, or other intellectual property rights. If the Software is not accompanied by a license agreement and you do not otherwise have a written agreement with Cypress governing the use of the Software, then Cypress hereby grants you a personal, non-exclusive, nontransferable license (without the right to sublicense) (1) under its copyright rights in the Software (a) for Software provided in source code form, to modify and reproduce the Software solely for use with Cypress hardware products, only internally within your organization, and (b) to distribute the Software in binary code form externally to end users (either directly or indirectly through resellers and distributors), solely for use on Cypress hardware product units, and (2) under those claims of Cypress's patents that are infringed by the Software (as provided by Cypress, unmodified) to make, use, distribute, and import the Software solely for use with Cypress hardware products. Any other use, reproduction, modification, translation, or compilation of the Software is prohibited.

TO THE EXTENT PERMITTED BY APPLICABLE LAW, CYPRESS MAKES NO WARRANTY OF ANY KIND, EXPRESS OR IMPLIED, WITH REGARD TO THIS DOCUMENT OR ANY SOFTWARE OR ACCOMPANYING HARDWARE, INCLUDING, BUT NOT LIMITED TO, THE IMPLIED WARRANTIES OF MERCHANTABILITY AND FITNESS FOR A PARTICULAR PURPOSE. To the extent permitted by applicable law, Cypress reserves the right to make changes to this document without further notice. Cypress does not assume any liability arising out of the application or use of any product or circuit described in this document. Any information provided in this document, including any sample design information or programming code, is provided only for reference purposes. It is the responsibility of the user of this document to properly design, program, and test the functionality and safety of any application made of this information and any resulting product. Cypress products are not designed, intended, or authorized for use as critical components in systems designed or intended for the operation of weapons, weapons systems, nuclear installations, life-support devices or systems, other medical devices or systems (including resuscitation equipment and surgical implants), pollution control or hazardous substances management, or other uses where the failure of the device or system could cause personal injury, death, or property damage ("Unintended Uses"). A critical component is any component of a device or system whose failure to perform can be reasonably expected to cause the failure of the device or system, or to affect its safety or effectiveness. Cypress is not liable, in whole or in part, and you shall and hereby do release Cypress from any claim, damage, or other liability arising from or related to all Unintended Uses of Cypress products. You shall indemnify and hold Cypress harmless from and against all claims, costs, damages, and other liabilities, including claims for personal injury or death, arising from or related to any Unintended Uses of Cypress products.

Cypress, the Cypress logo, Spansion, the Spansion logo, and combinations thereof, ModusToolbox, WICED, PSoC, CapSense, EZ-USB, F-RAM, and Traveo are trademarks or registered trademarks of Cypress in the United States and other countries. For a more complete list of Cypress trademarks, visit cypress.com. Other names and brands may be claimed as property of their respective owners.