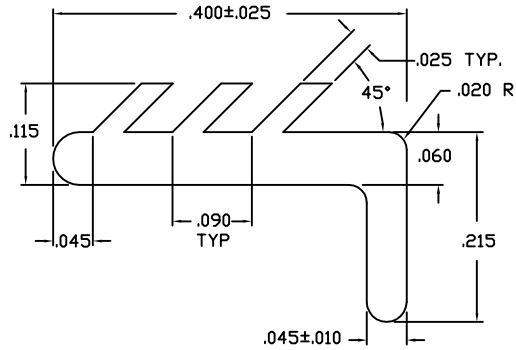


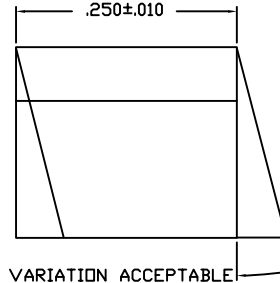
NOTES:

1. THIS SURFACE TO BE FLAT, RADII NOT TO ROUND OVER FLAT AREA
2. TUBE MATERIAL TO BE RIGID PVC
3. PLUG MAT'L TO BE SOFT PVC
4. MARK 'ANTISTATIC' WITH .065 HIGH RED GOTHIC LETTERS AT THE LEFT OF TUBE (THE 1st LETTER TO BE STARTED 10mm FROM THE LEFT)
5. CONTROLLING DIMENSIONS ARE IN INCHES.

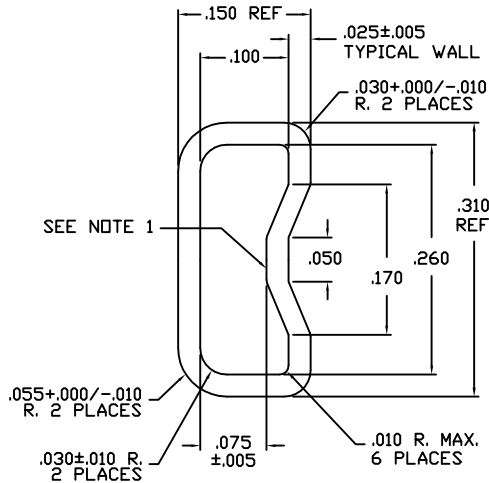
REVISIONS						
PAGE	ZONE	REV	ECN	DESCRIPTION	DATE	APPROVED
1	-	**	52325	NEW RELEASE	10/10/97	
1	-	*A	127267	Corrected tube length tolerance from 0.035 to 0.35	05/23/03	
1	-	*B	3296168	CHANGE TITLE FROM SOIC SHIPPING TUBE (.150" BODY) TO SOIC SHIPPING TUBE (.150 INCH BODY) CHANGE DRAWING TEMPLATE	06/29/11	QAD/KGL



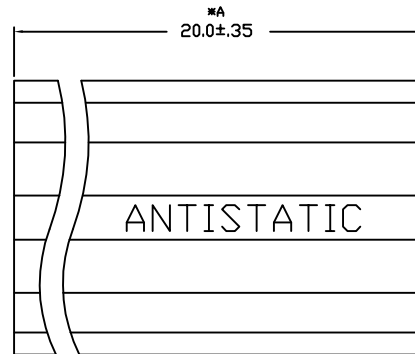
PLUG



10° CUT VARIATION ACCEPTABLE




SHIPPING TUBE



16/SOIC	48	YES	CLEAR	YES
14/SOIC	56	YES	CLEAR	YES
8/SOIC	97	YES	CLEAR	YES
LD COUNT	U/T	A/S	TINT	PRINT

THIS DRAWING CONTAINS INFORMATION WHICH IS THE PROPRIETARY PROPERTY OF CYPRESS SEMICONDUCTOR CORPORATION. THIS DRAWING IS RECEIVED IN CONFIDENCE AND ITS CONTENTS MAY NOT BE DISCLOSED WITHOUT WRITTEN CONSENT OF CYPRESS SEMICONDUCTOR CORPORATION.

UNLESS OTHERWISE SPECIFIED ALL DIMENSIONS ARE IN INCHES STANDARD TOLERANCES ON: DECIMALS .XX ± .XXX ± 0.010 .XXXX ± ANGLES ± 1°	DESIGNED BY	DATE	 CYPRESS Company Confidential				
	DRAWN BY	DATE					
	CHECKED BY	DATE					
	APPROVED BY	DATE					
MATERIAL	SEE NOTES	APPROVED BY	DATE	TITLE			
FINISH	SEE NOTES	APPROVED BY	DATE	SOIC SHIPPING TUBE (.150 INCH BODY)			
		APPROVED BY	DATE	SIZE	PART NO.	DWG NO	REV
		APPROVED BY	DATE	A	STB150	51-51077	*B
				SCALED TO FIT	ENG'G REV	SHEET 1 OF 1	