

Test Report

No. : CE/2019/41118

Date : 2019/04/16

Page : 1 of 37

mitsubishi gas chemical co., inc. electronics material division
5-2, MARUNOUCHI 2-CHOME, CHIYODA-KU, TOKYO 100-8324, JAPAN


The following samples was/were submitted and identified by/on behalf of the applicant as :

Sample Submitted By : MITSUBISHI GAS CHEMICAL CO., INC. ELECTRONICS MATERIAL DIVISION
Sample Description : COPPER CLAD LAMINATES & PREPREGS
Style/Item No. : PLEASE REFER TO PAGE 18
Buyer/Order No. : MGC 2019-034
Sample Receiving Date : 2019/04/08
Testing Period : 2019/04/08 to 2019/04/16

Test Requested

- (1) As specified by client, with reference to RoHS 2011/65/EU Annex II and amending Directive (EU) 2015/863 to determine Cadmium, Lead, Mercury, Cr(VI), PBBs, PBDEs, DBP, BBP, DEHP, DIBP contents in the submitted sample(s).
- (2) Please refer to next pages for the other item(s).

Test Result(s) : Please refer to following pages.


Troy Chang / Manager - Tec
Signed for and behalf of
SGS TAIWAN LTD.
Chemical Laboratory - Taipei



This document is issued by the Company subject to its General Conditions of Service printed overleaf, available on request or accessible at <http://www.sgs.com/en/Terms-and-Conditions.aspx> and, for electronic format documents, subject to Terms and Conditions for Electronic Documents at <https://www.sgs.com/en/terms-and-conditions/terms-e-document>. Attention is drawn to the limitation of liability, indemnification and jurisdiction issues defined therein. Any holder of this document is advised that information contained hereon reflects the Company's findings at the time of its intervention only and within the limits of client's instruction, if any. The Company's sole responsibility is to its Client and this document does not exonerate parties to a transaction from exercising all their rights and obligations under the transaction documents. This document cannot be reproduced, except in full, without prior written approval of the Company. Any unauthorized alteration, forgery or falsification of the content or appearance of this document is unlawful and offenders may be prosecuted to the fullest extent of the law. Unless otherwise stated the results shown in this test report refer only to the sample(s) tested.

Test Report

No. : CE/2019/41118

Date : 2019/04/16

Page : 2 of 37

MITSUBISHI GAS CHEMICAL CO., INC. ELECTRONICS MATERIAL DIVISION
5-2, MARUNOUCHI 2-CHOME, CHIYODA-KU, TOKYO 100-8324, JAPAN

Test Result(s)

PART NAME No.1 : BLACK SHEET

Test Item(s)	Unit	Method	MDL	Result
				No.1
Cadmium (Cd)	mg/kg	With reference to IEC 62321-5 (2013) and performed by ICP-AES.	2	n.d.
Lead (Pb)	mg/kg	With reference to IEC 62321-5 (2013) and performed by ICP-AES.	2	5.33
Mercury (Hg)	mg/kg	With reference to IEC 62321-4:2013+AMD1:2017 and performed by ICP-AES.	2	n.d.
Hexavalent Chromium Cr(VI)	mg/kg	With reference to IEC 62321-7-2 (2017) and performed by UV-VIS.	8	n.d.
Sum of PBBs	mg/kg	With reference to IEC 62321-6 (2015) and performed by GC/MS.	-	n.d.
Monobromobiphenyl	mg/kg		5	n.d.
Dibromobiphenyl	mg/kg		5	n.d.
Tribromobiphenyl	mg/kg		5	n.d.
Tetrabromobiphenyl	mg/kg		5	n.d.
Pentabromobiphenyl	mg/kg		5	n.d.
Hexabromobiphenyl	mg/kg		5	n.d.
Heptabromobiphenyl	mg/kg		5	n.d.
Octabromobiphenyl	mg/kg		5	n.d.
Nonabromobiphenyl	mg/kg		5	n.d.
Decabromobiphenyl	mg/kg		5	n.d.
Sum of PBDEs	mg/kg		-	n.d.
Monobromodiphenyl ether	mg/kg		5	n.d.
Dibromodiphenyl ether	mg/kg		5	n.d.
Tribromodiphenyl ether	mg/kg		5	n.d.
Tetrabromodiphenyl ether	mg/kg		5	n.d.
Pentabromodiphenyl ether	mg/kg		5	n.d.
Hexabromodiphenyl ether	mg/kg		5	n.d.
Heptabromodiphenyl ether	mg/kg		5	n.d.
Octabromodiphenyl ether	mg/kg		5	n.d.
Nonabromodiphenyl ether	mg/kg	5	n.d.	
Decabromodiphenyl ether	mg/kg	5	n.d.	

This document is issued by the Company subject to its General Conditions of Service printed overleaf, available on request or accessible at <http://www.sgs.com/en/Terms-and-Conditions.aspx> and, for electronic format documents, subject to Terms and Conditions for Electronic Documents at <https://www.sgs.com/en/terms-and-conditions/terms-e-document>. Attention is drawn to the limitation of liability, indemnification and jurisdiction issues defined therein. Any holder of this document is advised that information contained herein reflects the Company's findings at the time of its intervention only and within the limits of client's instruction, if any. The Company's sole responsibility is to its Client and this document does not exonerate parties to a transaction from exercising all their rights and obligations under the transaction documents. This document cannot be reproduced, except in full, without prior written approval of the Company. Any unauthorized alteration, forgery or falsification of the content or appearance of this document is unlawful and offenders may be prosecuted to the fullest extent of the law. Unless otherwise stated the results shown in this test report refer only to the sample(s) tested.

Test Report

No. : CE/2019/41118

Date : 2019/04/16

Page : 3 of 37

MITSUBISHI GAS CHEMICAL CO., INC. ELECTRONICS MATERIAL DIVISION
5-2, MARUNOUCHI 2-CHOME, CHIYODA-KU, TOKYO 100-8324, JAPAN

Test Item(s)	Unit	Method	MDL	Result
				No.1
Tetrabromobisphenol A (TBBP-A) (CAS No.: 79-94-7)	mg/kg	With reference to Global SOP RSTS-E&E-121 (2012). Analysis was performed by LC/MS.	10	n.d.
Polychlorinated Biphenyls (PCBs) (CAS No.: 1336-36-3)	mg/kg	With reference to US EPA 3550C (2007). Analysis was performed by GC/MS.	0.5	n.d.
Polychlorinated Naphthalene (PCNs)	mg/kg	With reference to US EPA 3550C (2007). Analysis was performed by GC/MS.	5	n.d.
Polychlorinated Terphenyls (PCTs)	mg/kg	With reference to US EPA 3550C (2007). Analysis was performed by GC/MS.	0.5	n.d.
Alkanes, C10-13, chloro (Short Chain Chlorinated Paraffins) (CAS No.: 85535-84-8)	mg/kg	With reference to US EPA 3550C (2007). Analysis was performed by GC/MS.	100	n.d.
PVC	**	Analysis was performed by FTIR and FLAME Test.	-	Negative
Tributyl Tin (TBT)	mg/kg	With reference to ISO 17353 (2004). Analysis was performed by GC/FPD.	0.03	n.d.
Triphenyl Tin (TphT)	mg/kg	With reference to ISO 17353 (2004). Analysis was performed by GC/FPD.	0.03	n.d.
Bis(tributyltin)oxide (TBTO) (CAS No.: 56-35-9)	mg/kg	With reference to ISO 17353 (2004). Analysis was performed by GC/FPD. Calculated from the result of Tributyl Tin (TBT).	0.03 (▲)	n.d.
Asbestos				
Chrysotile (CAS No.: 12001-29-5)	%	With reference to EPA 600/R-93/116 (1993). Analysis was performed by Stereo Microscope (SM), Dispersion Staining Polarized Light Microscope (DS-PLM) and X-ray Diffraction Spectrometer (XRD).	-	Negative
Amosite (CAS No.: 12172-73-5)	%		-	Negative
Crocidolite (CAS No.: 12001-28-4)	%		-	Negative
Anthophyllite (CAS No.: 77536-67-5)	%		-	Negative
Tremolite (CAS No.: 77536-68-6)	%		-	Negative
Actinolite (CAS No.: 77536-66-4)	%		-	Negative
AZO				
1): 4-AMINODIPHENYL (CAS No.: 92-67-1)	mg/kg	With reference to LFGB 82.02-2 (2013). Analysis was performed by GC/MS.	3	n.d.
2): BENZIDINE (CAS No.: 92-87-5)	mg/kg	With reference to LFGB 82.02-2 (2013). Analysis was performed by GC/MS.	3	n.d.
3): 4-CHLORO-O-TOLUIDINE (CAS No.: 95-69-2)	mg/kg	With reference to LFGB 82.02-2 (2013). Analysis was performed by GC/MS.	3	n.d.

This document is issued by the Company subject to its General Conditions of Service printed overleaf, available on request or accessible at <http://www.sgs.com/en/Terms-and-Conditions.aspx> and, for electronic format documents, subject to Terms and Conditions for Electronic Documents at <https://www.sgs.com/en/terms-and-conditions/terms-e-document>. Attention is drawn to the limitation of liability, indemnification and jurisdiction issues defined therein. Any holder of this document is advised that information contained hereon reflects the Company's findings at the time of its intervention only and within the limits of client's instruction, if any. The Company's sole responsibility is to its Client and this document does not exonerate parties to a transaction from exercising all their rights and obligations under the transaction documents. This document cannot be reproduced, except in full, without prior written approval of the Company. Any unauthorized alteration, forgery or falsification of the content or appearance of this document is unlawful and offenders may be prosecuted to the fullest extent of the law. Unless otherwise stated the results shown in this test report refer only to the sample(s) tested.

Test Report

No. : CE/2019/41118

Date : 2019/04/16

Page : 4 of 37

MITSUBISHI GAS CHEMICAL CO., INC. ELECTRONICS MATERIAL DIVISION
5-2, MARUNOUCHI 2-CHOME, CHIYODA-KU, TOKYO 100-8324, JAPAN

Test Item(s)	Unit	Method	MDL	Result
				No.1
4): 2-NAPHTHYLAMINE (CAS No.: 91-59-8)	mg/kg	With reference to LFGB 82.02-2 (2013). Analysis was performed by GC/MS.	3	n.d.
5): O-AMINOAZOTOLUENE (CAS No.: 97-56-3)	mg/kg	With reference to LFGB 82.02-2 (2013). Analysis was performed by GC/MS.	3	n.d.
6): 2-AMINO-4-NITROTOLUENE (CAS No.: 99-55-8)	mg/kg	With reference to LFGB 82.02-2 (2013). Analysis was performed by GC/MS.	3	n.d.
7): P-CHLOROANILINE (CAS No.: 106-47-8)	mg/kg	With reference to LFGB 82.02-2 (2013). Analysis was performed by GC/MS.	3	n.d.
8): 2,4-DIAMINOANISOLE (CAS No.: 615-05-4)	mg/kg	With reference to LFGB 82.02-2 (2013). Analysis was performed by GC/MS.	3	n.d.
9): 4,4'-DIAMINODIPHENYLMETHANE (CAS No.: 101-77-9)	mg/kg	With reference to LFGB 82.02-2 (2013). Analysis was performed by GC/MS.	3	n.d.
10): 3,3'-DICHLOOROBENZIDINE (CAS No.: 91-94-1)	mg/kg	With reference to LFGB 82.02-2 (2013). Analysis was performed by GC/MS.	3	n.d.
11): 3,3'-DIMETHOXYBENZIDINE (CAS No.: 119-90-4)	mg/kg	With reference to LFGB 82.02-2 (2013). Analysis was performed by GC/MS.	3	n.d.
12): 3,3'-DIMETHYLBENZIDINE (CAS No.: 119-93-7)	mg/kg	With reference to LFGB 82.02-2 (2013). Analysis was performed by GC/MS.	3	n.d.
13): 3,3'-DIMETHYL-4,4'-DIAMINODIPHENYLMETHANE (CAS No.: 838-88-0)	mg/kg	With reference to LFGB 82.02-2 (2013). Analysis was performed by GC/MS.	3	n.d.
14): P-CRESIDINE (2-METHOXY-5-METHYLANILINE) (CAS No.: 120-71-8)	mg/kg	With reference to LFGB 82.02-2 (2013). Analysis was performed by GC/MS.	3	n.d.
15): 4,4'-METHYLENE-BIS-(2-CHLOROANILINE) (CAS No.: 101-14-4)	mg/kg	With reference to LFGB 82.02-2 (2013). Analysis was performed by GC/MS.	3	n.d.
16): 4,4'-OXYDIANILINE (CAS No.: 101-80-4)	mg/kg	With reference to LFGB 82.02-2 (2013). Analysis was performed by GC/MS.	3	n.d.
17): 4,4'-THIODIANILINE (CAS No.: 139-65-1)	mg/kg	With reference to LFGB 82.02-2 (2013). Analysis was performed by GC/MS.	3	n.d.
18): O-TOLUIDINE (CAS No.: 95-53-4)	mg/kg	With reference to LFGB 82.02-2 (2013). Analysis was performed by GC/MS.	3	n.d.

This document is issued by the Company subject to its General Conditions of Service printed overleaf, available on request or accessible at <http://www.sgs.com/en/Terms-and-Conditions.aspx> and, for electronic format documents, subject to Terms and Conditions for Electronic Documents at <https://www.sgs.com/en/terms-and-conditions/terms-e-document>. Attention is drawn to the limitation of liability, indemnification and jurisdiction issues defined therein. Any holder of this document is advised that information contained herein reflects the Company's findings at the time of its intervention only and within the limits of client's instruction, if any. The Company's sole responsibility is to its Client and this document does not exonerate parties to a transaction from exercising all their rights and obligations under the transaction documents. This document cannot be reproduced, except in full, without prior written approval of the Company. Any unauthorized alteration, forgery or falsification of the content or appearance of this document is unlawful and offenders may be prosecuted to the fullest extent of the law. Unless otherwise stated the results shown in this test report refer only to the sample(s) tested.

Test Report

No. : CE/2019/41118

Date : 2019/04/16

Page : 5 of 37

MITSUBISHI GAS CHEMICAL CO., INC. ELECTRONICS MATERIAL DIVISION
5-2, MARUNOUCHI 2-CHOME, CHIYODA-KU, TOKYO 100-8324, JAPAN

Test Item(s)	Unit	Method	MDL	Result
				No.1
19): 2,4-TOLUYLENEDIAMINE (CAS No.: 95-80-7)	mg/kg	With reference to LFGB 82.02-2 (2013). Analysis was performed by GC/MS.	3	n.d.
20): 2,4,5-TRIMETHYLANILINE (CAS No.: 137-17-7)	mg/kg	With reference to LFGB 82.02-2 (2013). Analysis was performed by GC/MS.	3	n.d.
21): O-ANISIDINE (CAS No.: 90-04-0)	mg/kg	With reference to LFGB 82.02-2 (2013). Analysis was performed by GC/MS.	3	n.d.
22): 4-AMINOAZOBENZENE (CAS No.: 60-09-3)	mg/kg	With reference to LFGB 82.02-2 (2013). Analysis was performed by GC/MS.	3	n.d.
23): 2,4-XYLIDINE (CAS No.: 95-68-1)	mg/kg	With reference to LFGB 82.02-2 (2013). Analysis was performed by GC/MS.	3	n.d.
24): 2,6-XYLIDINE (CAS No.: 87-62-7)	mg/kg	With reference to LFGB 82.02-2 (2013). Analysis was performed by GC/MS.	3	n.d.
DBP (Dibutyl phthalate) (CAS No.: 84-74-2)	mg/kg	With reference to IEC 62321-8 (2017). Analysis was performed by GC/MS.	50	n.d.
BBP (Butyl Benzyl phthalate) (CAS No.: 85-68-7)	mg/kg	With reference to IEC 62321-8 (2017). Analysis was performed by GC/MS.	50	n.d.
DEHP (Di- (2-ethylhexyl) phthalate) (CAS No.: 117-81-7)	mg/kg	With reference to IEC 62321-8 (2017). Analysis was performed by GC/MS.	50	n.d.
DIDP (Di-isodecyl phthalate) (CAS No.: 26761-40-0; 68515-49-1)	mg/kg	With reference to IEC 62321-8 (2017). Analysis was performed by GC/MS.	50	n.d.
DINP (Di-isononyl phthalate) (CAS No.: 28553-12-0; 68515-48-0)	mg/kg	With reference to IEC 62321-8 (2017). Analysis was performed by GC/MS.	50	n.d.
DNOP (Di-n-octyl phthalate) (CAS No.: 117-84-0)	mg/kg	With reference to IEC 62321-8 (2017). Analysis was performed by GC/MS.	50	n.d.
DIBP (Di-isobutyl phthalate) (CAS No.: 84-69-5)	mg/kg	With reference to IEC 62321-8 (2017). Analysis was performed by GC/MS.	50	n.d.
DEP (Di-ethyl phthalate) (CAS No.: 84-66-2)	mg/kg	With reference to IEC 62321-8 (2017). Analysis was performed by GC/MS.	50	n.d.
DMP (Di-methyl phthalate) (CAS No.: 131-11-3)	mg/kg	With reference to IEC 62321-8 (2017). Analysis was performed by GC/MS.	50	n.d.
DIOP (Di-isooctyl phthalate) (CAS No.: 27554-26-3)	mg/kg	With reference to IEC 62321-8 (2017). Analysis was performed by GC/MS.	50	n.d.
DPrP (Di-propyl phthalate) (CAS No.: 131-16-8)	mg/kg	With reference to IEC 62321-8 (2017). Analysis was performed by GC/MS.	50	n.d.

This document is issued by the Company subject to its General Conditions of Service printed overleaf, available on request or accessible at <http://www.sgs.com/en/Terms-and-Conditions.aspx> and, for electronic format documents, subject to Terms and Conditions for Electronic Documents at <https://www.sgs.com/en/terms-and-conditions/terms-e-document>. Attention is drawn to the limitation of liability, indemnification and jurisdiction issues defined therein. Any holder of this document is advised that information contained herein reflects the Company's findings at the time of its intervention only and within the limits of client's instruction, if any. The Company's sole responsibility is to its Client and this document does not exonerate parties to a transaction from exercising all their rights and obligations under the transaction documents. This document cannot be reproduced, except in full, without prior written approval of the Company. Any unauthorized alteration, forgery or falsification of the content or appearance of this document is unlawful and offenders may be prosecuted to the fullest extent of the law. Unless otherwise stated the results shown in this test report refer only to the sample(s) tested.

Test Report

No. : CE/2019/41118

Date : 2019/04/16

Page : 6 of 37

MITSUBISHI GAS CHEMICAL CO., INC. ELECTRONICS MATERIAL DIVISION
5-2, MARUNOUCHI 2-CHOME, CHIYODA-KU, TOKYO 100-8324, JAPAN

Test Item(s)	Unit	Method	MDL	Result
				No.1
DCHP (Di-cyclohexyl phthalate) (CAS No.: 84-61-7)	mg/kg	With reference to IEC 62321-8 (2017). Analysis was performed by GC/MS.	50	n.d.
DNNP (Di-n-nonyl phthalate) (DNP) (CAS No.: 84-76-4)	mg/kg	With reference to IEC 62321-8 (2017). Analysis was performed by GC/MS.	50	n.d.
DEHA (Di-2-ethylhexyl adipate) (CAS No.: 103-23-1)	mg/kg	With reference to IEC 62321-8 (2017). Analysis was performed by GC/MS.	50	n.d.
DNPP (Di-n-pentyl phthalate) (CAS No.: 131-18-0)	mg/kg	With reference to IEC 62321-8 (2017). Analysis was performed by GC/MS.	50	n.d.
DNHP (Di-n-hexyl phthalate) (CAS No.: 84-75-3)	mg/kg	With reference to IEC 62321-8 (2017). Analysis was performed by GC/MS.	50	n.d.
DNHP (Di-n-heptyl phthalate) (CAS No.: 3648-21-3)	mg/kg	With reference to IEC 62321-8 (2017). Analysis was performed by GC/MS.	50	n.d.
UDP (undecyl dodecyl phthalate) (CAS No.: 68515-47-9)	mg/kg	With reference to IEC 62321-8 (2017). Analysis was performed by GC/MS.	50	n.d.
DUP (Di-undecyl phthalate) (CAS No.: 3648-20-2)	mg/kg	With reference to IEC 62321-8 (2017). Analysis was performed by GC/MS.	50	n.d.
DPHP (Di-propylheptyl phthalate) (CAS No.: 53306-54-0)	mg/kg	With reference to IEC 62321-8 (2017). Analysis was performed by GC/MS.	50	n.d.
DBEP (bis(2-n-Butoxyethyl)phthalate) (CAS No.: 117-83-9)	mg/kg	With reference to IEC 62321-8 (2017). Analysis was performed by GC/MS.	50	n.d.
DEEP (bis(2-Ethoxyethyl)phthalate) (CAS No.: 605-54-9)	mg/kg	With reference to IEC 62321-8 (2017). Analysis was performed by GC/MS.	50	n.d.
DMEP (Bis (2-methoxyethyl) phthalate) (CAS No.: 117-82-8)	mg/kg	With reference to IEC 62321-8 (2017). Analysis was performed by GC/MS.	50	n.d.
BMPP (bis(4-Methyl-2-pentyl)phthalate) (CAS No.: 146-50-9)	mg/kg	With reference to IEC 62321-8 (2017). Analysis was performed by GC/MS.	50	n.d.
DBzP (Dibenzyl phthalate) (CAS No.: 523-31-9)	mg/kg	With reference to IEC 62321-8 (2017). Analysis was performed by GC/MS.	50	n.d.
DPhP (Diphenyl phthalate) (CAS No.: 84-62-8)	mg/kg	With reference to IEC 62321-8 (2017). Analysis was performed by GC/MS.	50	n.d.
NPIPP (N-pentyl iso-pentyl phthalate) (CAS No.: 776297-69-9)	mg/kg	With reference to IEC 62321-8 (2017). Analysis was performed by GC/MS.	50	n.d.
DIPP (Di-iso-pentyl phthalate) (CAS No.: 605-50-5)	mg/kg	With reference to IEC 62321-8 (2017). Analysis was performed by GC/MS.	50	n.d.

This document is issued by the Company subject to its General Conditions of Service printed overleaf, available on request or accessible at <http://www.sgs.com/en/Terms-and-Conditions.aspx> and, for electronic format documents, subject to Terms and Conditions for Electronic Documents at <https://www.sgs.com/en/terms-and-conditions/terms-e-document>. Attention is drawn to the limitation of liability, indemnification and jurisdiction issues defined therein. Any holder of this document is advised that information contained herein reflects the Company's findings at the time of its intervention only and within the limits of client's instruction, if any. The Company's sole responsibility is to its Client and this document does not exonerate parties to a transaction from exercising all their rights and obligations under the transaction documents. This document cannot be reproduced, except in full, without prior written approval of the Company. Any unauthorized alteration, forgery or falsification of the content or appearance of this document is unlawful and offenders may be prosecuted to the fullest extent of the law. Unless otherwise stated the results shown in this test report refer only to the sample(s) tested.

Test Report

No. : CE/2019/41118

Date : 2019/04/16

Page : 7 of 37

mitsubishi gas chemical co., inc. electronics material division
5-2, MARUNOUCHI 2-CHOME, CHIYODA-KU, TOKYO 100-8324, JAPAN

Test Item(s)	Unit	Method	MDL	Result
				No.1
DINA (Di-iso-nonyl adipate) (CAS No.: 33703-08-1)	mg/kg	With reference to IEC 62321-8 (2017). Analysis was performed by GC/MS.	50	n.d.
DHNUP (1,2-Benzenedicarboxylic acid, di-C7-11-branched and linear alkyl esters) (CAS No.: 68515-42-4)	mg/kg	With reference to IEC 62321-8 (2017). Analysis was performed by GC/MS.	50	n.d.
DIHP (1,2-Benzenedicarboxylic acid, di-C6-8-branched alkyl esters, C7-rich) (CAS No.: 71888-89-6)	mg/kg	With reference to IEC 62321-8 (2017). Analysis was performed by GC/MS.	50	n.d.
1,2-Benzenedicarboxylic acid, dihexyl ester, branched and linear (CAS No.: 68515-50-4)	mg/kg	With reference to IEC 62321-8 (2017). Analysis was performed by GC/MS.	50	n.d.
DPP (1,2-Benzenedicarboxylic acid, dipentylester, branched and linear) (CAS No.: 84777-06-0)	mg/kg	With reference to IEC 62321-8 (2017). Analysis was performed by GC/MS.	50	n.d.
Formaldehyde (CAS No.: 50-00-0)	mg/kg	With reference to ISO 17226-1 (2018). Analysis was performed by HPLC/DAD.	3	n.d.
Perfluorooctane sulfonates (PFOS-Acid, Metal Salt, Amide)	mg/kg	With reference to CEN/TS 15968 (2010). Analysis was performed by LC/MS.	0.01	n.d.
PFOA (CAS No.: 335-67-1)	mg/kg	With reference to CEN/TS 15968 (2010). Analysis was performed by LC/MS.	0.01	n.d.
Antimony (Sb)	mg/kg	With reference to US EPA 3052 (1996). Analysis was performed by ICP-AES.	2	n.d.
Beryllium (Be)	mg/kg	With reference to US EPA 3052 (1996). Analysis was performed by ICP-AES.	2	n.d.
CFC's (Chlorofluorocarbons)				
Group I				
Chlorofluorocarbon-11 (CAS No.: 75-69-4)	mg/kg	With reference to US EPA 5021A (2014). Analysis was performed by GC/MS.	1	n.d.
Chlorofluorocarbon-12 (CAS No.: 75-71-8)	mg/kg	With reference to US EPA 5021A (2014). Analysis was performed by GC/MS.	1	n.d.
Chlorofluorocarbon-113 (CAS No.: 76-13-1)	mg/kg	With reference to US EPA 5021A (2014). Analysis was performed by GC/MS.	1	n.d.
Chlorofluorocarbon-114 (CAS No.: 76-14-2)	mg/kg	With reference to US EPA 5021A (2014). Analysis was performed by GC/MS.	1	n.d.

This document is issued by the Company subject to its General Conditions of Service printed overleaf, available on request or accessible at <http://www.sgs.com/en/Terms-and-Conditions.aspx> and, for electronic format documents, subject to Terms and Conditions for Electronic Documents at <https://www.sgs.com/en/terms-and-conditions/terms-e-document>. Attention is drawn to the limitation of liability, indemnification and jurisdiction issues defined therein. Any holder of this document is advised that information contained herein reflects the Company's findings at the time of its intervention only and within the limits of client's instruction, if any. The Company's sole responsibility is to its Client and this document does not exonerate parties to a transaction from exercising all their rights and obligations under the transaction documents. This document cannot be reproduced, except in full, without prior written approval of the Company. Any unauthorized alteration, forgery or falsification of the content or appearance of this document is unlawful and offenders may be prosecuted to the fullest extent of the law. Unless otherwise stated the results shown in this test report refer only to the sample(s) tested.

Test Report

No. : CE/2019/41118

Date : 2019/04/16

Page : 8 of 37

MITSUBISHI GAS CHEMICAL CO., INC. ELECTRONICS MATERIAL DIVISION
5-2, MARUNOUCHI 2-CHOME, CHIYODA-KU, TOKYO 100-8324, JAPAN

Test Item(s)	Unit	Method	MDL	Result
				No.1
Chlorofluorocarbon-115 (CAS No.: 76-15-3)	mg/kg	With reference to US EPA 5021A (2014). Analysis was performed by GC/MS.	1	n.d.
Group III				
Chlorofluorocarbon-13 (CAS No.: 75-72-9)	mg/kg	With reference to US EPA 5021A (2014). Analysis was performed by GC/MS.	1	n.d.
Chlorofluorocarbon-111 (CAS No.: 354-56-3)	mg/kg	With reference to US EPA 5021A (2014). Analysis was performed by GC/MS.	1	n.d.
Chlorofluorocarbon-112 (CAS No.: 76-12-0)	mg/kg	With reference to US EPA 5021A (2014). Analysis was performed by GC/MS.	1	n.d.
Chlorofluorocarbon-211 (CAS No.: 422-78-6)	mg/kg	With reference to US EPA 5021A (2014). Analysis was performed by GC/MS.	1	n.d.
Chlorofluorocarbon-212 (CAS No.: 3182-26-1)	mg/kg	With reference to US EPA 5021A (2014). Analysis was performed by GC/MS.	1	n.d.
Chlorofluorocarbon-213 (CAS No.: 2354-06-5)	mg/kg	With reference to US EPA 5021A (2014). Analysis was performed by GC/MS.	1	n.d.
Chlorofluorocarbon-214 (CAS No.: 29255-31-0)	mg/kg	With reference to US EPA 5021A (2014). Analysis was performed by GC/MS.	1	n.d.
Chlorofluorocarbon-215 (CAS No.: 4259-43-2)	mg/kg	With reference to US EPA 5021A (2014). Analysis was performed by GC/MS.	1	n.d.
Chlorofluorocarbon-216 (CAS No.: 661-97-2)	mg/kg	With reference to US EPA 5021A (2014). Analysis was performed by GC/MS.	1	n.d.
Chlorofluorocarbon-217 (CAS No.: 422-86-6)	mg/kg	With reference to US EPA 5021A (2014). Analysis was performed by GC/MS.	1	n.d.
HCFCs (Hydrochlorofluorocarbons)				
HCFC-21 (CAS No.: 75-43-4)	mg/kg	With reference to US EPA 5021A (2014). Analysis was performed by GC/MS.	1	n.d.
HCFC-22 (CAS No.: 75-45-6)	mg/kg	With reference to US EPA 5021A (2014). Analysis was performed by GC/MS.	1	n.d.
HCFC-31 (CAS No.: 593-70-4)	mg/kg	With reference to US EPA 5021A (2014). Analysis was performed by GC/MS.	1	n.d.
HCFC-121 (CAS No.: 354-14-3)	mg/kg	With reference to US EPA 5021A (2014). Analysis was performed by GC/MS.	1	n.d.
HCFC-122 (CAS No.: 354-21-2)	mg/kg	With reference to US EPA 5021A (2014). Analysis was performed by GC/MS.	1	n.d.

This document is issued by the Company subject to its General Conditions of Service printed overleaf, available on request or accessible at <http://www.sgs.com/en/Terms-and-Conditions.aspx> and, for electronic format documents, subject to Terms and Conditions for Electronic Documents at <https://www.sgs.com/en/terms-and-conditions/terms-e-document>. Attention is drawn to the limitation of liability, indemnification and jurisdiction issues defined therein. Any holder of this document is advised that information contained herein reflects the Company's findings at the time of its intervention only and within the limits of client's instruction, if any. The Company's sole responsibility is to its Client and this document does not exonerate parties to a transaction from exercising all their rights and obligations under the transaction documents. This document cannot be reproduced, except in full, without prior written approval of the Company. Any unauthorized alteration, forgery or falsification of the content or appearance of this document is unlawful and offenders may be prosecuted to the fullest extent of the law. Unless otherwise stated the results shown in this test report refer only to the sample(s) tested.



Test Report

No. : CE/2019/41118

Date : 2019/04/16

Page : 9 of 37

MITSUBISHI GAS CHEMICAL CO., INC. ELECTRONICS MATERIAL DIVISION
5-2, MARUNOUCHI 2-CHOME, CHIYODA-KU, TOKYO 100-8324, JAPAN

Test Item(s)	Unit	Method	MDL	Result
				No.1
HCFC-123 (CAS No.: 306-83-2)	mg/kg	With reference to US EPA 5021A (2014). Analysis was performed by GC/MS.	1	n.d.
HCFC-124 (CAS No.: 2837-89-0)	mg/kg	With reference to US EPA 5021A (2014). Analysis was performed by GC/MS.	1	n.d.
HCFC-131 (CAS No.: 359-28-4)	mg/kg	With reference to US EPA 5021A (2014). Analysis was performed by GC/MS.	1	n.d.
HCFC-132b (CAS No.: 1649-08-7)	mg/kg	With reference to US EPA 5021A (2014). Analysis was performed by GC/MS.	1	n.d.
HCFC-133a (CAS No.: 75-88-7)	mg/kg	With reference to US EPA 5021A (2014). Analysis was performed by GC/MS.	1	n.d.
HCFC-141b (CAS No.: 1717-00-6)	mg/kg	With reference to US EPA 5021A (2014). Analysis was performed by GC/MS.	1	n.d.
HCFC-142b (CAS No.: 75-68-3)	mg/kg	With reference to US EPA 5021A (2014). Analysis was performed by GC/MS.	1	n.d.
HCFC-221 (CAS No.: 422-26-4)	mg/kg	With reference to US EPA 5021A (2014). Analysis was performed by GC/MS.	1	n.d.
HCFC-222 (CAS No.: 422-49-1)	mg/kg	With reference to US EPA 5021A (2014). Analysis was performed by GC/MS.	1	n.d.
HCFC-223 (CAS No.: 422-52-6)	mg/kg	With reference to US EPA 5021A (2014). Analysis was performed by GC/MS.	1	n.d.
HCFC-224 (CAS No.: 422-54-8)	mg/kg	With reference to US EPA 5021A (2014). Analysis was performed by GC/MS.	1	n.d.
HCFC-225ca (CAS No.: 422-56-0)	mg/kg	With reference to US EPA 5021A (2014). Analysis was performed by GC/MS.	1	n.d.
HCFC-225cb (CAS No.: 507-55-1)	mg/kg	With reference to US EPA 5021A (2014). Analysis was performed by GC/MS.	1	n.d.
HCFC-226 (CAS No.: 431-87-8)	mg/kg	With reference to US EPA 5021A (2014). Analysis was performed by GC/MS.	1	n.d.
HCFC-231 (CAS No.: 421-94-3)	mg/kg	With reference to US EPA 5021A (2014). Analysis was performed by GC/MS.	1	n.d.
HCFC-232 (CAS No.: 460-89-9)	mg/kg	With reference to US EPA 5021A (2014). Analysis was performed by GC/MS.	1	n.d.
HCFC-233 (CAS No.: 7125-84-0)	mg/kg	With reference to US EPA 5021A (2014). Analysis was performed by GC/MS.	1	n.d.

This document is issued by the Company subject to its General Conditions of Service printed overleaf, available on request or accessible at <http://www.sgs.com/en/Terms-and-Conditions.aspx> and, for electronic format documents, subject to Terms and Conditions for Electronic Documents at <https://www.sgs.com/en/terms-and-conditions/terms-e-document>. Attention is drawn to the limitation of liability, indemnification and jurisdiction issues defined therein. Any holder of this document is advised that information contained herein reflects the Company's findings at the time of its intervention only and within the limits of client's instruction, if any. The Company's sole responsibility is to its Client and this document does not exonerate parties to a transaction from exercising all their rights and obligations under the transaction documents. This document cannot be reproduced, except in full, without prior written approval of the Company. Any unauthorized alteration, forgery or falsification of the content or appearance of this document is unlawful and offenders may be prosecuted to the fullest extent of the law. Unless otherwise stated the results shown in this test report refer only to the sample(s) tested.

Test Report

No. : CE/2019/41118

Date : 2019/04/16

Page : 10 of 37

MITSUBISHI GAS CHEMICAL CO., INC. ELECTRONICS MATERIAL DIVISION
5-2, MARUNOUCHI 2-CHOME, CHIYODA-KU, TOKYO 100-8324, JAPAN

Test Item(s)	Unit	Method	MDL	Result
				No.1
HCFC-234 (CAS No.: 425-94-5)	mg/kg	With reference to US EPA 5021A (2014). Analysis was performed by GC/MS.	1	n.d.
HCFC-235 (CAS No.: 460-92-4)	mg/kg	With reference to US EPA 5021A (2014). Analysis was performed by GC/MS.	1	n.d.
HCFC-241 (CAS No.: 666-27-3)	mg/kg	With reference to US EPA 5021A (2014). Analysis was performed by GC/MS.	1	n.d.
HCFC-242 (CAS No.: 460-63-9)	mg/kg	With reference to US EPA 5021A (2014). Analysis was performed by GC/MS.	1	n.d.
HCFC-243 (CAS No.: 460-69-5)	mg/kg	With reference to US EPA 5021A (2014). Analysis was performed by GC/MS.	1	n.d.
HCFC-244	mg/kg	With reference to US EPA 5021A (2014). Analysis was performed by GC/MS.	1	n.d.
HCFC-251 (CAS No.: 421-41-0)	mg/kg	With reference to US EPA 5021A (2014). Analysis was performed by GC/MS.	1	n.d.
HCFC-252 (CAS No.: 819-00-1)	mg/kg	With reference to US EPA 5021A (2014). Analysis was performed by GC/MS.	1	n.d.
HCFC-253 (CAS No.: 460-35-5)	mg/kg	With reference to US EPA 5021A (2014). Analysis was performed by GC/MS.	1	n.d.
HCFC-261 (CAS No.: 420-97-3)	mg/kg	With reference to US EPA 5021A (2014). Analysis was performed by GC/MS.	1	n.d.
HCFC-262 (CAS No.: 421-02-03)	mg/kg	With reference to US EPA 5021A (2014). Analysis was performed by GC/MS.	1	n.d.
HCFC-271 (CAS No.: 430-55-7)	mg/kg	With reference to US EPA 5021A (2014). Analysis was performed by GC/MS.	1	n.d.
Halons				
Halon-1211 (CAS No.: 353-59-3)	mg/kg	With reference to US EPA 5021A (2014). Analysis was performed by GC/MS.	1	n.d.
Halon-1301 (CAS No.: 75-63-8)	mg/kg	With reference to US EPA 5021A (2014). Analysis was performed by GC/MS.	1	n.d.
Halon-2402 (CAS No.: 124-73-2)	mg/kg	With reference to US EPA 5021A (2014). Analysis was performed by GC/MS.	1	n.d.
Bromomethane (CAS No.: 74-83-9)	mg/kg	With reference to US EPA 5021A (2014). Analysis was performed by GC/MS.	1	n.d.

This document is issued by the Company subject to its General Conditions of Service printed overleaf, available on request or accessible at <http://www.sgs.com/en/Terms-and-Conditions.aspx> and, for electronic format documents, subject to Terms and Conditions for Electronic Documents at <https://www.sgs.com/en/terms-and-conditions/terms-e-document>. Attention is drawn to the limitation of liability, indemnification and jurisdiction issues defined therein. Any holder of this document is advised that information contained herein reflects the Company's findings at the time of its intervention only and within the limits of client's instruction, if any. The Company's sole responsibility is to its Client and this document does not exonerate parties to a transaction from exercising all their rights and obligations under the transaction documents. This document cannot be reproduced, except in full, without prior written approval of the Company. Any unauthorized alteration, forgery or falsification of the content or appearance of this document is unlawful and offenders may be prosecuted to the fullest extent of the law. Unless otherwise stated the results shown in this test report refer only to the sample(s) tested.

Test Report

No. : CE/2019/41118

Date : 2019/04/16

Page : 11 of 37

MITSUBISHI GAS CHEMICAL CO., INC. ELECTRONICS MATERIAL DIVISION
5-2, MARUNOUCHI 2-CHOME, CHIYODA-KU, TOKYO 100-8324, JAPAN

Test Item(s)	Unit	Method	MDL	Result
				No.1
HBFCs (Hydrobromofluorocarbons)				
HBFC-21B2 (CH ₂ FBr ₂) (CAS No.: 1868-53-7)	mg/kg	With reference to US EPA 5021A (2014). Analysis was performed by GC/MS.	1	n.d.
HBFC-22B1 (CH ₂ F ₂ Br) (CAS No.: 1511-62-2)	mg/kg	With reference to US EPA 5021A (2014). Analysis was performed by GC/MS.	1	n.d.
HBFC-31B1 (CH ₂ FBr) (CAS No.: 373-52-4)	mg/kg	With reference to US EPA 5021A (2014). Analysis was performed by GC/MS.	1	n.d.
HBFC-121B4 (C ₂ H ₂ F ₄ Br ₄)	mg/kg	With reference to US EPA 5021A (2014). Analysis was performed by GC/MS.	1	n.d.
HBFC-122B3 (C ₂ H ₂ F ₂ Br ₃)	mg/kg	With reference to US EPA 5021A (2014). Analysis was performed by GC/MS.	1	n.d.
HBFC-123B2 (C ₂ H ₂ F ₃ Br ₂)	mg/kg	With reference to US EPA 5021A (2014). Analysis was performed by GC/MS.	1	n.d.
HBFC-124B1 (C ₂ H ₂ F ₄ Br)	mg/kg	With reference to US EPA 5021A (2014). Analysis was performed by GC/MS.	1	n.d.
HBFC-131B3 (C ₂ H ₂ F ₂ Br ₃)	mg/kg	With reference to US EPA 5021A (2014). Analysis was performed by GC/MS.	1	n.d.
HBFC-132B2 (C ₂ H ₂ F ₂ Br ₂)	mg/kg	With reference to US EPA 5021A (2014). Analysis was performed by GC/MS.	1	n.d.
HBFC-133B1 (C ₂ H ₂ F ₃ Br)	mg/kg	With reference to US EPA 5021A (2014). Analysis was performed by GC/MS.	1	n.d.
HBFC-141B2 (C ₂ H ₃ F ₃ Br ₂)	mg/kg	With reference to US EPA 5021A (2014). Analysis was performed by GC/MS.	1	n.d.
HBFC-142B1 (C ₂ H ₃ F ₂ Br)	mg/kg	With reference to US EPA 5021A (2014). Analysis was performed by GC/MS.	1	n.d.
HBFC-151B1 (C ₂ H ₄ F ₃ Br)	mg/kg	With reference to US EPA 5021A (2014). Analysis was performed by GC/MS.	1	n.d.
HBFC-221B6 (C ₃ H ₂ F ₆ Br ₆)	mg/kg	With reference to US EPA 5021A (2014). Analysis was performed by GC/MS.	1	n.d.
HBFC-222B5 (C ₃ H ₂ F ₂ Br ₅)	mg/kg	With reference to US EPA 5021A (2014). Analysis was performed by GC/MS.	1	n.d.
HBFC-223B4 (C ₃ H ₂ F ₃ Br ₄)	mg/kg	With reference to US EPA 5021A (2014). Analysis was performed by GC/MS.	1	n.d.

This document is issued by the Company subject to its General Conditions of Service printed overleaf, available on request or accessible at <http://www.sgs.com/en/Terms-and-Conditions.aspx> and, for electronic format documents, subject to Terms and Conditions for Electronic Documents at <https://www.sgs.com/en/terms-and-conditions/terms-e-document>. Attention is drawn to the limitation of liability, indemnification and jurisdiction issues defined therein. Any holder of this document is advised that information contained herein reflects the Company's findings at the time of its intervention only and within the limits of client's instruction, if any. The Company's sole responsibility is to its Client and this document does not exonerate parties to a transaction from exercising all their rights and obligations under the transaction documents. This document cannot be reproduced, except in full, without prior written approval of the Company. Any unauthorized alteration, forgery or falsification of the content or appearance of this document is unlawful and offenders may be prosecuted to the fullest extent of the law. Unless otherwise stated the results shown in this test report refer only to the sample(s) tested.

Test Report

No. : CE/2019/41118

Date : 2019/04/16

Page : 12 of 37

MITSUBISHI GAS CHEMICAL CO., INC. ELECTRONICS MATERIAL DIVISION
5-2, MARUNOUCHI 2-CHOME, CHIYODA-KU, TOKYO 100-8324, JAPAN

Test Item(s)	Unit	Method	MDL	Result
				No.1
HBFC-224B3 (C3HF4Br3)	mg/kg	With reference to US EPA 5021A (2014). Analysis was performed by GC/MS.	1	n.d.
HBFC-225B2 (C3HF5Br2)	mg/kg	With reference to US EPA 5021A (2014). Analysis was performed by GC/MS.	1	n.d.
HBFC-226B1 (C3HF6Br)	mg/kg	With reference to US EPA 5021A (2014). Analysis was performed by GC/MS.	1	n.d.
HBFC-231B5 (C3H2FBr5)	mg/kg	With reference to US EPA 5021A (2014). Analysis was performed by GC/MS.	1	n.d.
HBFC-232B4 (C3H2F2Br4)	mg/kg	With reference to US EPA 5021A (2014). Analysis was performed by GC/MS.	1	n.d.
HBFC-233B3 (C3H2F3Br3)	mg/kg	With reference to US EPA 5021A (2014). Analysis was performed by GC/MS.	1	n.d.
HBFC-234B2 (C3H2F4Br2)	mg/kg	With reference to US EPA 5021A (2014). Analysis was performed by GC/MS.	1	n.d.
HBFC-235B1 (C3H2F5Br)	mg/kg	With reference to US EPA 5021A (2014). Analysis was performed by GC/MS.	1	n.d.
HBFC-241B4 (C3H3FBr4)	mg/kg	With reference to US EPA 5021A (2014). Analysis was performed by GC/MS.	1	n.d.
HBFC-242B3 (C3H3F2Br3)	mg/kg	With reference to US EPA 5021A (2014). Analysis was performed by GC/MS.	1	n.d.
HBFC-243B2 (C3H3F3Br2)	mg/kg	With reference to US EPA 5021A (2014). Analysis was performed by GC/MS.	1	n.d.
HBFC-244B1 (C3H3F4Br)	mg/kg	With reference to US EPA 5021A (2014). Analysis was performed by GC/MS.	1	n.d.
HBFC-251B3 (C3H4FBr3)	mg/kg	With reference to US EPA 5021A (2014). Analysis was performed by GC/MS.	1	n.d.
HBFC-252B2 (C3H4F2Br2)	mg/kg	With reference to US EPA 5021A (2014). Analysis was performed by GC/MS.	1	n.d.
HBFC-253B1 (C3H4F3Br)	mg/kg	With reference to US EPA 5021A (2014). Analysis was performed by GC/MS.	1	n.d.
HBFC-261B2 (C3H5FBr2)	mg/kg	With reference to US EPA 5021A (2014). Analysis was performed by GC/MS.	1	n.d.
HBFC-262B1 (C3H5F2Br)	mg/kg	With reference to US EPA 5021A (2014). Analysis was performed by GC/MS.	1	n.d.

This document is issued by the Company subject to its General Conditions of Service printed overleaf, available on request or accessible at <http://www.sgs.com/en/Terms-and-Conditions.aspx> and, for electronic format documents, subject to Terms and Conditions for Electronic Documents at <https://www.sgs.com/en/terms-and-conditions/terms-e-document>. Attention is drawn to the limitation of liability, indemnification and jurisdiction issues defined therein. Any holder of this document is advised that information contained herein reflects the Company's findings at the time of its intervention only and within the limits of client's instruction, if any. The Company's sole responsibility is to its Client and this document does not exonerate parties to a transaction from exercising all their rights and obligations under the transaction documents. This document cannot be reproduced, except in full, without prior written approval of the Company. Any unauthorized alteration, forgery or falsification of the content or appearance of this document is unlawful and offenders may be prosecuted to the fullest extent of the law. Unless otherwise stated the results shown in this test report refer only to the sample(s) tested.

Test Report

No. : CE/2019/41118

Date : 2019/04/16

Page : 13 of 37

MITSUBISHI GAS CHEMICAL CO., INC. ELECTRONICS MATERIAL DIVISION
5-2, MARUNOUCHI 2-CHOME, CHIYODA-KU, TOKYO 100-8324, JAPAN

Test Item(s)	Unit	Method	MDL	Result
				No.1
HBFC-271B1 (C3H6FBr)	mg/kg	With reference to US EPA 5021A (2014). Analysis was performed by GC/MS.	1	n.d.
HFCs (Hydrofluorocarbon)				
HFC-23 (CHF3) (CAS No.: 75-46-7)	mg/kg	With reference to US EPA 5021A (2014). Analysis was performed by GC/MS.	1	n.d.
HFC-32 (CH2F2) (CAS No.: 75-10-5)	mg/kg	With reference to US EPA 5021A (2014). Analysis was performed by GC/MS.	1	n.d.
HFC-41 (CH3F) (CAS No.: 593-53-3)	mg/kg	With reference to US EPA 5021A (2014). Analysis was performed by GC/MS.	1	n.d.
HFC-43-10mee (C5H2F10)	mg/kg	With reference to US EPA 5021A (2014). Analysis was performed by GC/MS.	1	n.d.
HFC-125 (C2HF5)	mg/kg	With reference to US EPA 5021A (2014). Analysis was performed by GC/MS.	1	n.d.
HFC-134 (C2H2F4)	mg/kg	With reference to US EPA 5021A (2014). Analysis was performed by GC/MS.	1	n.d.
HFC-134a (CH2FCF3) (CAS No.: 811-97-2)	mg/kg	With reference to US EPA 5021A (2014). Analysis was performed by GC/MS.	1	n.d.
HFC-143 (CH3F3)	mg/kg	With reference to US EPA 5021A (2014). Analysis was performed by GC/MS.	1	n.d.
HFC-143a (CH3F3)	mg/kg	With reference to US EPA 5021A (2014). Analysis was performed by GC/MS.	1	n.d.
HFC-152a (C2H4F2) (CAS No.: 75-37-6)	mg/kg	With reference to US EPA 5021A (2014). Analysis was performed by GC/MS.	1	n.d.
HFC-227ea (C3HF7) (CAS No.: 431-89-0)	mg/kg	With reference to US EPA 5021A (2014). Analysis was performed by GC/MS.	1	n.d.
HFC-236fa (C3H2F6)	mg/kg	With reference to US EPA 5021A (2014). Analysis was performed by GC/MS.	1	n.d.
HFC-236ea (C3H2F6) (CAS No.: 431-63-0)	mg/kg	With reference to US EPA 5021A (2014). Analysis was performed by GC/MS.	1	n.d.
HFC-245ca (C3H3F5)	mg/kg	With reference to US EPA 5021A (2014). Analysis was performed by GC/MS.	1	n.d.
HFC-245fa (C3H3F5)	mg/kg	With reference to US EPA 5021A (2014). Analysis was performed by GC/MS.	1	n.d.

This document is issued by the Company subject to its General Conditions of Service printed overleaf, available on request or accessible at <http://www.sgs.com/en/Terms-and-Conditions.aspx> and, for electronic format documents, subject to Terms and Conditions for Electronic Documents at <https://www.sgs.com/en/terms-and-conditions/terms-e-document>. Attention is drawn to the limitation of liability, indemnification and jurisdiction issues defined therein. Any holder of this document is advised that information contained herein reflects the Company's findings at the time of its intervention only and within the limits of client's instruction, if any. The Company's sole responsibility is to its Client and this document does not exonerate parties to a transaction from exercising all their rights and obligations under the transaction documents. This document cannot be reproduced, except in full, without prior written approval of the Company. Any unauthorized alteration, forgery or falsification of the content or appearance of this document is unlawful and offenders may be prosecuted to the fullest extent of the law. Unless otherwise stated the results shown in this test report refer only to the sample(s) tested.

Test Report

No. : CE/2019/41118

Date : 2019/04/16

Page : 14 of 37

MITSUBISHI GAS CHEMICAL CO., INC. ELECTRONICS MATERIAL DIVISION
5-2, MARUNOUCHI 2-CHOME, CHIYODA-KU, TOKYO 100-8324, JAPAN

Test Item(s)	Unit	Method	MDL	Result
				No.1
HFC-365mfc (C4H5F5)	mg/kg	With reference to US EPA 5021A (2014). Analysis was performed by GC/MS.	1	n.d.
PFCs (Perfluorocarbon)				
F14 (CAS No.: 75-73-0)	mg/kg	With reference to US EPA 5021A (2014). Analysis was performed by GC/MS.	1	n.d.
Fluorocarbon 116 (CAS No.: 76-16-4)	mg/kg	With reference to US EPA 5021A (2014). Analysis was performed by GC/MS.	1	n.d.
Freon 218 (CAS No.: 76-19-7)	mg/kg	With reference to US EPA 5021A (2014). Analysis was performed by GC/MS.	1	n.d.
Decafluorobutane (CAS No.: 355-25-9)	mg/kg	With reference to US EPA 5021A (2014). Analysis was performed by GC/MS.	1	n.d.
Freon C318 (CAS No.: 115-25-3)	mg/kg	With reference to US EPA 5021A (2014). Analysis was performed by GC/MS.	1	n.d.
Perfluor-1-butene (CAS No.: 357-26-6)	mg/kg	With reference to US EPA 5021A (2014). Analysis was performed by GC/MS.	1	n.d.
perfluorisobutene (CAS No.: 382-21-8)	mg/kg	With reference to US EPA 5021A (2014). Analysis was performed by GC/MS.	1	n.d.
1,4-dihydrooctafluorobutane (CAS No.: 377-36-6)	mg/kg	With reference to US EPA 5021A (2014). Analysis was performed by GC/MS.	1	n.d.
Nonafluor-2- (trifluoromethyl) butane (CAS No.: 594-91-2)	mg/kg	With reference to US EPA 5021A (2014). Analysis was performed by GC/MS.	1	n.d.
Perfluoro-n-pentane (CAS No.: 678-26-2)	mg/kg	With reference to US EPA 5021A (2014). Analysis was performed by GC/MS.	1	n.d.
2-perfluoromethylpentane (CAS No.: 355-04-4)	mg/kg	With reference to US EPA 5021A (2014). Analysis was performed by GC/MS.	1	n.d.
Perfluorohexane (CAS No.: 355-42-0)	mg/kg	With reference to US EPA 5021A (2014). Analysis was performed by GC/MS.	1	n.d.
CHCs (Chlorinate hydrocarbon)				
1,1,1,2-Tetrachloroethane (CAS No.: 630-20-6)	mg/kg	With reference to US EPA 5021A (2014). Analysis was performed by GC/MS.	1	n.d.
1,1,1-Trichloroethane (CAS No.: 71-55-6)	mg/kg	With reference to US EPA 5021A (2014). Analysis was performed by GC/MS.	1	n.d.
1,1,2,2-Tetrachloroethane (CAS No.: 79-34-5)	mg/kg	With reference to US EPA 5021A (2014). Analysis was performed by GC/MS.	1	n.d.

This document is issued by the Company subject to its General Conditions of Service printed overleaf, available on request or accessible at <http://www.sgs.com/en/Terms-and-Conditions.aspx> and, for electronic format documents, subject to Terms and Conditions for Electronic Documents at <https://www.sgs.com/en/terms-and-conditions/terms-e-document>. Attention is drawn to the limitation of liability, indemnification and jurisdiction issues defined therein. Any holder of this document is advised that information contained herein reflects the Company's findings at the time of its intervention only and within the limits of client's instruction, if any. The Company's sole responsibility is to its Client and this document does not exonerate parties to a transaction from exercising all their rights and obligations under the transaction documents. This document cannot be reproduced, except in full, without prior written approval of the Company. Any unauthorized alteration, forgery or falsification of the content or appearance of this document is unlawful and offenders may be prosecuted to the fullest extent of the law. Unless otherwise stated the results shown in this test report refer only to the sample(s) tested.

Test Report

No. : CE/2019/41118

Date : 2019/04/16

Page : 15 of 37

MITSUBISHI GAS CHEMICAL CO., INC. ELECTRONICS MATERIAL DIVISION
5-2, MARUNOUCHI 2-CHOME, CHIYODA-KU, TOKYO 100-8324, JAPAN

Test Item(s)	Unit	Method	MDL	Result
				No.1
1,1,2-Trichloroethane (CAS No.: 79-00-5)	mg/kg	With reference to US EPA 5021A (2014). Analysis was performed by GC/MS.	1	n.d.
1,1-Dichloroethane (CAS No.: 75-34-3)	mg/kg	With reference to US EPA 5021A (2014). Analysis was performed by GC/MS.	1	n.d.
1,1-Dichloroethene (CAS No.: 75-35-4)	mg/kg	With reference to US EPA 5021A (2014). Analysis was performed by GC/MS.	1	n.d.
1,1-Dichloropropene (CAS No.: 563-58-6)	mg/kg	With reference to US EPA 5021A (2014). Analysis was performed by GC/MS.	1	n.d.
1,2,3-Trichloropropane (CAS No.: 96-18-4)	mg/kg	With reference to US EPA 5021A (2014). Analysis was performed by GC/MS.	1	n.d.
1,2-Dichloroethane (CAS No.: 107-06-2)	mg/kg	With reference to US EPA 5021A (2014). Analysis was performed by GC/MS.	1	n.d.
1,2-Dichloropropane (CAS No.: 78-87-5)	mg/kg	With reference to US EPA 5021A (2014). Analysis was performed by GC/MS.	1	n.d.
1,3-Dichloropropane (CAS No.: 142-28-9)	mg/kg	With reference to US EPA 5021A (2014). Analysis was performed by GC/MS.	1	n.d.
2,2-Dichloropropane (CAS No.: 594-20-7)	mg/kg	With reference to US EPA 5021A (2014). Analysis was performed by GC/MS.	1	n.d.
Carbon tetrachloride (CAS No.: 56-23-5)	mg/kg	With reference to US EPA 5021A (2014). Analysis was performed by GC/MS.	1	n.d.
Chloroethane (CAS No.: 75-00-3)	mg/kg	With reference to US EPA 5021A (2014). Analysis was performed by GC/MS.	1	n.d.
Chloroform (CAS No.: 67-66-3)	mg/kg	With reference to US EPA 5021A (2014). Analysis was performed by GC/MS.	1	n.d.
Chloromethane (CAS No.: 74-87-3)	mg/kg	With reference to US EPA 5021A (2014). Analysis was performed by GC/MS.	1	n.d.
cis-1,2-Dichloroethene (CAS No.: 156-59-2)	mg/kg	With reference to US EPA 5021A (2014). Analysis was performed by GC/MS.	1	n.d.
cis-1,3-Dichloropropene (CAS No.: 10061-01-5)	mg/kg	With reference to US EPA 5021A (2014). Analysis was performed by GC/MS.	1	n.d.
Hexachlorobutadiene (CAS No.: 87-68-3)	mg/kg	With reference to US EPA 5021A (2014). Analysis was performed by GC/MS.	1	n.d.
Dichloromethane, Methylene chloride (CAS No.: 75-09-2)	mg/kg	With reference to US EPA 5021A (2014). Analysis was performed by GC/MS.	1	n.d.

This document is issued by the Company subject to its General Conditions of Service printed overleaf, available on request or accessible at <http://www.sgs.com/en/Terms-and-Conditions.aspx> and, for electronic format documents, subject to Terms and Conditions for Electronic Documents at <https://www.sgs.com/en/terms-and-conditions/terms-e-document>. Attention is drawn to the limitation of liability, indemnification and jurisdiction issues defined therein. Any holder of this document is advised that information contained hereon reflects the Company's findings at the time of its intervention only and within the limits of client's instruction, if any. The Company's sole responsibility is to its Client and this document does not exonerate parties to a transaction from exercising all their rights and obligations under the transaction documents. This document cannot be reproduced, except in full, without prior written approval of the Company. Any unauthorized alteration, forgery or falsification of the content or appearance of this document is unlawful and offenders may be prosecuted to the fullest extent of the law. Unless otherwise stated the results shown in this test report refer only to the sample(s) tested.

Test Report

No. : CE/2019/41118

Date : 2019/04/16

Page : 16 of 37

MITSUBISHI GAS CHEMICAL CO., INC. ELECTRONICS MATERIAL DIVISION
5-2, MARUNOUCHI 2-CHOME, CHIYODA-KU, TOKYO 100-8324, JAPAN

Test Item(s)	Unit	Method	MDL	Result
				No.1
Tetrachloroethene (CAS No.: 127-18-4)	mg/kg	With reference to US EPA 5021A (2014). Analysis was performed by GC/MS.	1	n.d.
trans-1,2-Dichloroethene (CAS No.: 156-60-5)	mg/kg	With reference to US EPA 5021A (2014). Analysis was performed by GC/MS.	1	n.d.
trans-1,3-Dichloropropene (CAS No.: 10061-02-6)	mg/kg	With reference to US EPA 5021A (2014). Analysis was performed by GC/MS.	1	n.d.
Trichloroethylene (CAS No.: 79-01-6)	mg/kg	With reference to US EPA 5021A (2014). Analysis was performed by GC/MS.	1	n.d.
Bromochloromethane (CAS No.: 74-97-5)	mg/kg	With reference to US EPA 5021A (2014). Analysis was performed by GC/MS.	1	n.d.
Sulfur Hexafluoride (SF6) (CAS No.: 2551-62-4)	mg/kg	With reference to US EPA 5021A (2014). Analysis was performed by GC/MS.	1	n.d.
Hexabromocyclododecane (HBCDD) and all major diastereoisomers identified (α - HBCDD, β - HBCDD, γ - HBCDD) (CAS No.: 25637-99-4 and 3194-55-6 (134237-51-7, 134237-50-6, 134237-52-8))	mg/kg	With reference to IEC 62321 (2008). Analysis was performed by GC/MS.	5	n.d.
Radioactive Substances	μ Sv/ hour	Geiger counter.	-	Negative*
Medium-Chained Chlorinated Paraffins (C14-C17) (MCCP) (CAS No.: 85535-85-9)	mg/kg	With reference to US EPA 3550C (2007). Analysis was performed by GC/MS.	100	n.d.
Selenium (Se)	mg/kg	With reference to US EPA 3052 (1996). Analysis was performed by ICP-AES.	2	n.d.
Bismuth (Bi)	mg/kg	With reference to US EPA 3052 (1996). Analysis was performed by ICP-AES.	2	n.d.
Monomethyl dibromodiphenyl methane (DBBT) (CAS No.: 99688-47-8)	mg/kg	With reference to US EPA 3550C (2007). Analysis was performed by GC/MS.	0.5	n.d.
Mirex (CAS No.: 2385-85-5)	mg/kg	With reference to US EPA 3550C (2007). Analysis was performed by GC/MS.	5	n.d.
Tris (2-chloroethyl) phosphate (TCEP) (CAS No.: 115-96-8)	mg/kg	With reference to US EPA 3550C (2007). Analysis was performed by GC/MS.	5	n.d.
Tin (Sn)	mg/kg	With reference to US EPA 3052 (1996). Analysis was performed by ICP-AES.	2	n.d.

This document is issued by the Company subject to its General Conditions of Service printed overleaf, available on request or accessible at <http://www.sgs.com/en/Terms-and-Conditions.aspx> and, for electronic format documents, subject to Terms and Conditions for Electronic Documents at <https://www.sgs.com/en/terms-and-conditions/terms-e-document>. Attention is drawn to the limitation of liability, indemnification and jurisdiction issues defined therein. Any holder of this document is advised that information contained hereon reflects the Company's findings at the time of its intervention only and within the limits of client's instruction, if any. The Company's sole responsibility is to its Client and this document does not exonerate parties to a transaction from exercising all their rights and obligations under the transaction documents. This document cannot be reproduced, except in full, without prior written approval of the Company. Any unauthorized alteration, forgery or falsification of the content or appearance of this document is unlawful and offenders may be prosecuted to the fullest extent of the law. Unless otherwise stated the results shown in this test report refer only to the sample(s) tested.

Test Report

No. : CE/2019/41118

Date : 2019/04/16

Page : 17 of 37

MITSUBISHI GAS CHEMICAL CO., INC. ELECTRONICS MATERIAL DIVISION
 5-2, MARUNOUCHI 2-CHOME, CHIYODA-KU, TOKYO 100-8324, JAPAN

Test Item(s)	Unit	Method	MDL	Result
				No.1
Dibutyl Tin (DBT)	mg/kg	With reference to ISO 17353 (2004). Analysis was performed by GC/FPD.	0.03	n.d.
Diocetyl Tin (DOT)	mg/kg	With reference to ISO 17353 (2004). Analysis was performed by GC/FPD.	0.03	n.d.
2-benzotriazol-2-yl-4,6-di-tert-butylphenol (UV-320) (CAS No.: 3846-71-7)	mg/kg	With reference to US EPA 3550C (2007). Analysis was performed by GC/MS.	5	n.d.

Note :

1. mg/kg = ppm ; 0.1wt% = 1000ppm
2. MDL = Method Detection Limit
3. n.d. = Not Detected = less than MDL
4. " - " = Not Regulated
5. ** = Qualitative analysis (No Unit)
6. Negative = Undetectable / Positive = Detectable
7. Testing range of asbestos qualitative analysis is from less than 0.1% to 100%. The judgment criterion: asbestos fibers being found is shown as "Positive"; asbestos fibers not being found is shown as "Negative".
8. (▲) : The MDL was evaluated for element / tested substance.

Conversion Formula : $AX = A \times F$

AX	A	F
Bis(tributyltin)oxide (TBTO)	Tributyl Tin (TBT)	1.024

9. Negative*/Positive*: The test result of Geiger counter is from comparison between test outcome and environment background. In general, there is little radiation dose existing in environment. (Radiation dose from environment background usually less than or equal to 0.2μSv/hr)
The test result less than environment background was shown as Negative*; the result greater than environment background was shown as Positive*.

PFOS Reference Information : POPs - (EU) 757/2010

Outlawing PFOS as substances or preparations in concentrations above 0.001% (10ppm), in semi-finished products or articles or parts at a level above 0.1%(1000ppm), in textiles or other coated materials above 1μg/m².

This document is issued by the Company subject to its General Conditions of Service printed overleaf, available on request or accessible at <http://www.sgs.com/en/Terms-and-Conditions.aspx> and, for electronic format documents, subject to Terms and Conditions for Electronic Documents at <https://www.sgs.com/en/terms-and-conditions/terms-e-document>. Attention is drawn to the limitation of liability, indemnification and jurisdiction issues defined therein. Any holder of this document is advised that information contained hereon reflects the Company's findings at the time of its intervention only and within the limits of client's instruction, if any. The Company's sole responsibility is to its Client and this document does not exonerate parties to a transaction from exercising all their rights and obligations under the transaction documents. This document cannot be reproduced, except in full, without prior written approval of the Company. Any unauthorized alteration, forgery or falsification of the content or appearance of this document is unlawful and offenders may be prosecuted to the fullest extent of the law. Unless otherwise stated the results shown in this test report refer only to the sample(s) tested.



Test Report

No. : CE/2019/41118

Date : 2019/04/16

Page : 18 of 37

MITSUBISHI GAS CHEMICAL CO., INC. ELECTRONICS MATERIAL DIVISION
5-2, MARUNOUCHI 2-CHOME, CHIYODA-KU, TOKYO 100-8324, JAPAN

Style/Item No. :

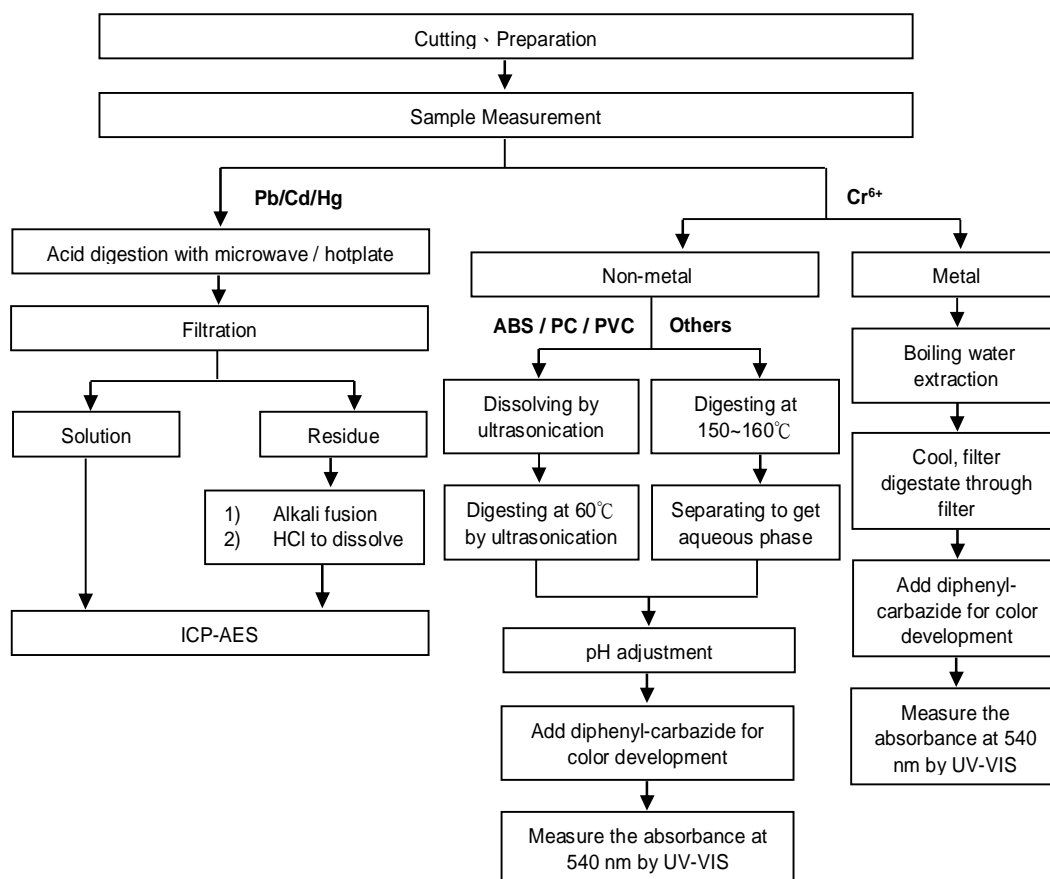
CCL-HL830NS(WITHOUT COPPER FOIL), CCL-HL830NS(TYPE-HX)(WITHOUT COPPER FOIL),
CCL-HL830NS(TYPE-EX)(WITHOUT COPPER FOIL), CCL-HL830NS(TYPE-LC)(WITHOUT COPPER FOIL),
CCL-HL830NS(TYPE-LD)(WITHOUT COPPER FOIL), CCL-HL830NS(TYPE-HD)(WITHOUT COPPER FOIL),
CCL-HL832NS(WITHOUT COPPER FOIL), CCL-HL832NS(TYPE-HX)(WITHOUT COPPER FOIL),
CCL-HL832NS(TYPE-EX)(WITHOUT COPPER FOIL), CCL-HL832NS(TYPE-LC)(WITHOUT COPPER FOIL),
CCL-HL832NS(TYPE-LD)(WITHOUT COPPER FOIL), CCL-HL832NS(TYPE-HD)(WITHOUT COPPER FOIL),
GHPL-830NS, GHPL-830NS(TYPE-LC), GHPL-830NS(TYPE-LD), GHPL-830NS(TYPE-HD), GHPL-832NS,
GHPL-832NS(TYPE-LC), GHPL-832NS(TYPE-LD), GHPL-832NS(TYPE-HD)

This document is issued by the Company subject to its General Conditions of Service printed overleaf, available on request or accessible at <http://www.sgs.com/en/Terms-and-Conditions.aspx> and, for electronic format documents, subject to Terms and Conditions for Electronic Documents at <https://www.sgs.com/en/terms-and-conditions/terms-e-document>. Attention is drawn to the limitation of liability, indemnification and jurisdiction issues defined therein. Any holder of this document is advised that information contained hereon reflects the Company's findings at the time of its intervention only and within the limits of client's instruction, if any. The Company's sole responsibility is to its Client and this document does not exonerate parties to a transaction from exercising all their rights and obligations under the transaction documents. This document cannot be reproduced, except in full, without prior written approval of the Company. Any unauthorized alteration, forgery or falsification of the content or appearance of this document is unlawful and offenders may be prosecuted to the fullest extent of the law. Unless otherwise stated the results shown in this test report refer only to the sample(s) tested.

Analytical flow chart of Heavy Metal

These samples were dissolved totally by pre-conditioning method according to below flow chart. (Cr⁶⁺ test method excluded)

- Technician : Rita Chen
- Supervisor: Troy Chang

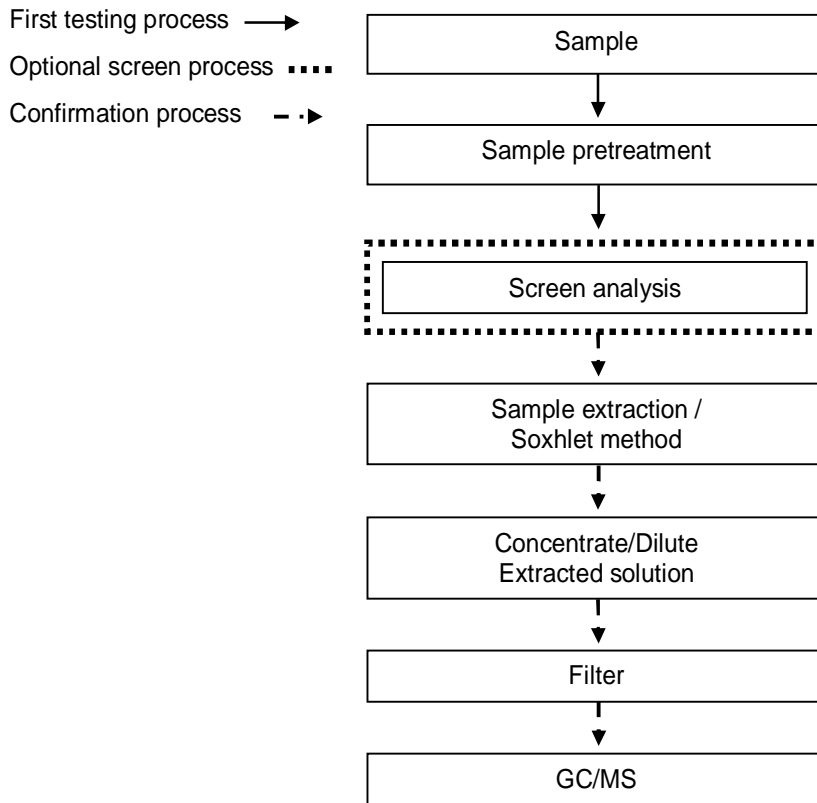


This document is issued by the Company subject to its General Conditions of Service printed overleaf, available on request or accessible at <http://www.sgs.com/en/Terms-and-Conditions.aspx> and, for electronic format documents, subject to Terms and Conditions for Electronic Documents at <https://www.sgs.com/en/terms-and-conditions/terms-e-document>. Attention is drawn to the limitation of liability, indemnification and jurisdiction issues defined therein. Any holder of this document is advised that information contained hereon reflects the Company's findings at the time of its intervention only and within the limits of client's instruction, if any. The Company's sole responsibility is to its Client and this document does not exonerate parties to a transaction from exercising all their rights and obligations under the transaction documents. This document cannot be reproduced, except in full, without prior written approval of the Company. Any unauthorized alteration, forgery or falsification of the content or appearance of this document is unlawful and offenders may be prosecuted to the fullest extent of the law. Unless otherwise stated the results shown in this test report refer only to the sample(s) tested.

MITSUBISHI GAS CHEMICAL CO., INC. ELECTRONICS MATERIAL DIVISION
 5-2, MARUNOUCHI 2-CHOME, CHIYODA-KU, TOKYO 100-8324, JAPAN

Analytical flow chart – PBB / PBDE

- Technician : Yaling Tu
- Supervisor: Troy Chang

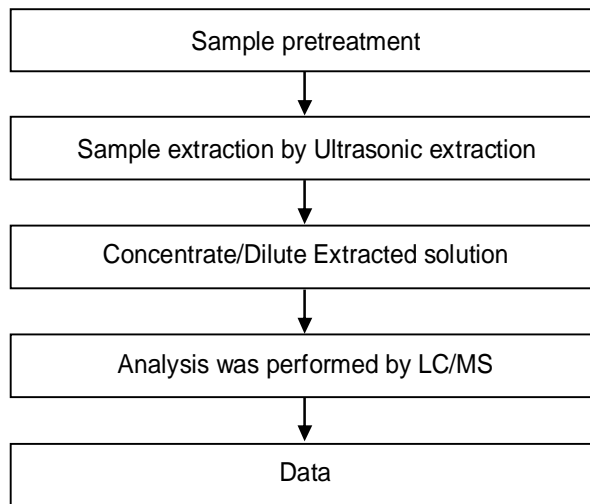


This document is issued by the Company subject to its General Conditions of Service printed overleaf, available on request or accessible at <http://www.sgs.com/en/Terms-and-Conditions.aspx> and, for electronic format documents, subject to Terms and Conditions for Electronic Documents at <https://www.sgs.com/en/terms-and-conditions/terms-e-document>. Attention is drawn to the limitation of liability, indemnification and jurisdiction issues defined therein. Any holder of this document is advised that information contained hereon reflects the Company's findings at the time of its intervention only and within the limits of client's instruction, if any. The Company's sole responsibility is to its Client and this document does not exonerate parties to a transaction from exercising all their rights and obligations under the transaction documents. This document cannot be reproduced, except in full, without prior written approval of the Company. Any unauthorized alteration, forgery or falsification of the content or appearance of this document is unlawful and offenders may be prosecuted to the fullest extent of the law. Unless otherwise stated the results shown in this test report refer only to the sample(s) tested.

MITSUBISHI GAS CHEMICAL CO., INC. ELECTRONICS MATERIAL DIVISION
 5-2, MARUNOUCHI 2-CHOME, CHIYODA-KU, TOKYO 100-8324, JAPAN

Analytical flow chart - TBBP-A

- Technician: Yaling Tu
- Supervisor: Troy Chang

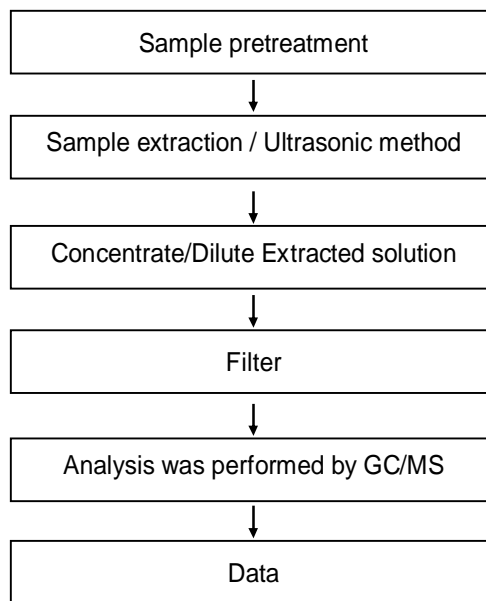


This document is issued by the Company subject to its General Conditions of Service printed overleaf, available on request or accessible at <http://www.sgs.com/en/Terms-and-Conditions.aspx> and, for electronic format documents, subject to Terms and Conditions for Electronic Documents at <https://www.sgs.com/en/terms-and-conditions/terms-e-document>. Attention is drawn to the limitation of liability, indemnification and jurisdiction issues defined therein. Any holder of this document is advised that information contained hereon reflects the Company's findings at the time of its intervention only and within the limits of client's instruction, if any. The Company's sole responsibility is to its Client and this document does not exonerate parties to a transaction from exercising all their rights and obligations under the transaction documents. This document cannot be reproduced, except in full, without prior written approval of the Company. Any unauthorized alteration, forgery or falsification of the content or appearance of this document is unlawful and offenders may be prosecuted to the fullest extent of the law. Unless otherwise stated the results shown in this test report refer only to the sample(s) tested.

MITSUBISHI GAS CHEMICAL CO., INC. ELECTRONICS MATERIAL DIVISION
5-2, MARUNOUCHI 2-CHOME, CHIYODA-KU, TOKYO 100-8324, JAPAN

Analytical flow chart - PCBs

- Technician: Yaling Tu
- Supervisor: Troy Chang

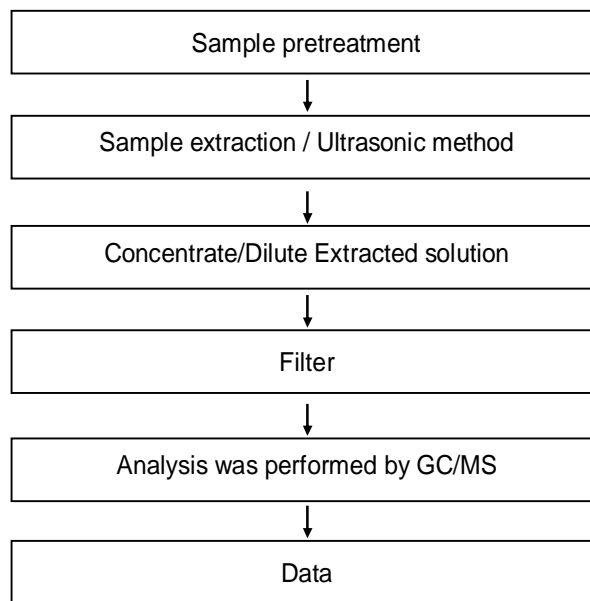


This document is issued by the Company subject to its General Conditions of Service printed overleaf, available on request or accessible at <http://www.sgs.com/en/Terms-and-Conditions.aspx> and, for electronic format documents, subject to Terms and Conditions for Electronic Documents at <https://www.sgs.com/en/terms-and-conditions/terms-e-document>. Attention is drawn to the limitation of liability, indemnification and jurisdiction issues defined therein. Any holder of this document is advised that information contained hereon reflects the Company's findings at the time of its intervention only and within the limits of client's instruction, if any. The Company's sole responsibility is to its Client and this document does not exonerate parties to a transaction from exercising all their rights and obligations under the transaction documents. This document cannot be reproduced, except in full, without prior written approval of the Company. Any unauthorized alteration, forgery or falsification of the content or appearance of this document is unlawful and offenders may be prosecuted to the fullest extent of the law. Unless otherwise stated the results shown in this test report refer only to the sample(s) tested.

MITSUBISHI GAS CHEMICAL CO., INC. ELECTRONICS MATERIAL DIVISION
 5-2, MARUNOUCHI 2-CHOME, CHIYODA-KU, TOKYO 100-8324, JAPAN

Analytical flow chart - PCNs

- Technician: Yaling Tu
- Supervisor: Troy Chang

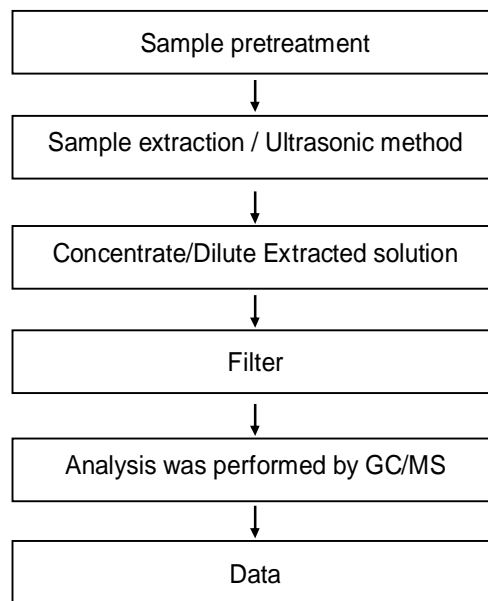


This document is issued by the Company subject to its General Conditions of Service printed overleaf, available on request or accessible at <http://www.sgs.com/en/Terms-and-Conditions.aspx> and, for electronic format documents, subject to Terms and Conditions for Electronic Documents at <https://www.sgs.com/en/terms-and-conditions/terms-e-document>. Attention is drawn to the limitation of liability, indemnification and jurisdiction issues defined therein. Any holder of this document is advised that information contained hereon reflects the Company's findings at the time of its intervention only and within the limits of client's instruction, if any. The Company's sole responsibility is to its Client and this document does not exonerate parties to a transaction from exercising all their rights and obligations under the transaction documents. This document cannot be reproduced, except in full, without prior written approval of the Company. Any unauthorized alteration, forgery or falsification of the content or appearance of this document is unlawful and offenders may be prosecuted to the fullest extent of the law. Unless otherwise stated the results shown in this test report refer only to the sample(s) tested.

MITSUBISHI GAS CHEMICAL CO., INC. ELECTRONICS MATERIAL DIVISION
 5-2, MARUNOUCHI 2-CHOME, CHIYODA-KU, TOKYO 100-8324, JAPAN

Analytical flow chart - PCTs

- Technician: Barry Tseng
- Supervisor: Troy Chang

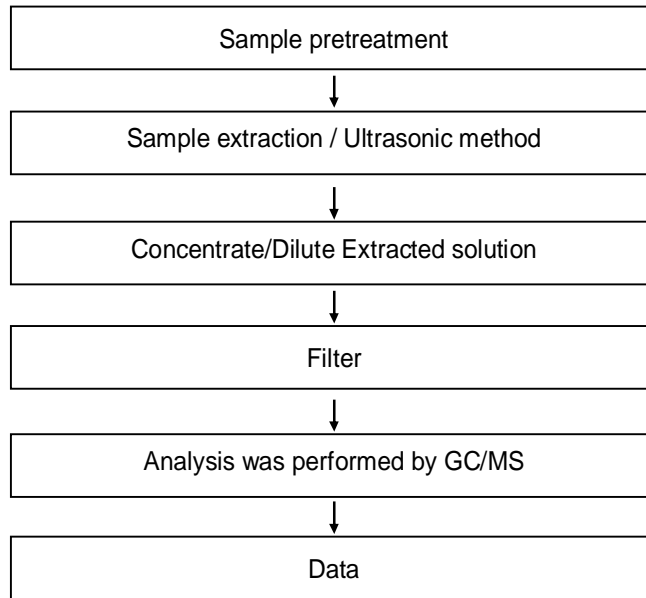


This document is issued by the Company subject to its General Conditions of Service printed overleaf, available on request or accessible at <http://www.sgs.com/en/Terms-and-Conditions.aspx> and, for electronic format documents, subject to Terms and Conditions for Electronic Documents at <https://www.sgs.com/en/terms-and-conditions/terms-e-document>. Attention is drawn to the limitation of liability, indemnification and jurisdiction issues defined therein. Any holder of this document is advised that information contained hereon reflects the Company's findings at the time of its intervention only and within the limits of client's instruction, if any. The Company's sole responsibility is to its Client and this document does not exonerate parties to a transaction from exercising all their rights and obligations under the transaction documents. This document cannot be reproduced, except in full, without prior written approval of the Company. Any unauthorized alteration, forgery or falsification of the content or appearance of this document is unlawful and offenders may be prosecuted to the fullest extent of the law. Unless otherwise stated the results shown in this test report refer only to the sample(s) tested.

MITSUBISHI GAS CHEMICAL CO., INC. ELECTRONICS MATERIAL DIVISION
 5-2, MARUNOUCHI 2-CHOME, CHIYODA-KU, TOKYO 100-8324, JAPAN

Analytical flow chart - Chlorinated Paraffins

- Technician: Yaling Tu
- Supervisor: Troy Chang

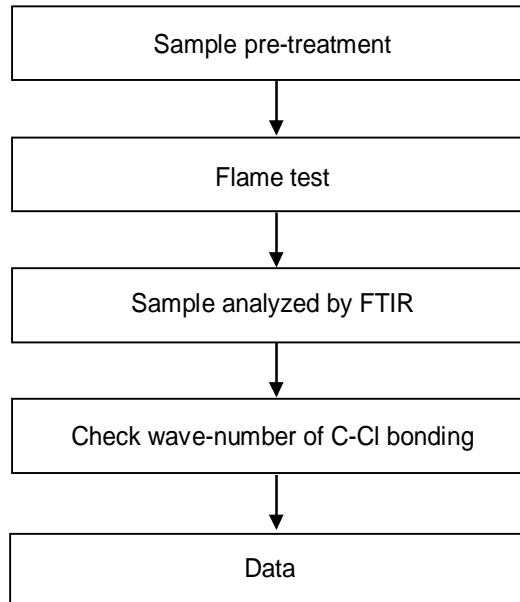


This document is issued by the Company subject to its General Conditions of Service printed overleaf, available on request or accessible at <http://www.sgs.com/en/Terms-and-Conditions.aspx> and, for electronic format documents, subject to Terms and Conditions for Electronic Documents at <https://www.sgs.com/en/terms-and-conditions/terms-e-document>. Attention is drawn to the limitation of liability, indemnification and jurisdiction issues defined therein. Any holder of this document is advised that information contained hereon reflects the Company's findings at the time of its intervention only and within the limits of client's instruction, if any. The Company's sole responsibility is to its Client and this document does not exonerate parties to a transaction from exercising all their rights and obligations under the transaction documents. This document cannot be reproduced, except in full, without prior written approval of the Company. Any unauthorized alteration, forgery or falsification of the content or appearance of this document is unlawful and offenders may be prosecuted to the fullest extent of the law. Unless otherwise stated the results shown in this test report refer only to the sample(s) tested.

MITSUBISHI GAS CHEMICAL CO., INC. ELECTRONICS MATERIAL DIVISION
5-2, MARUNOUCHI 2-CHOME, CHIYODA-KU, TOKYO 100-8324, JAPAN

Analysis flow chart - PVC

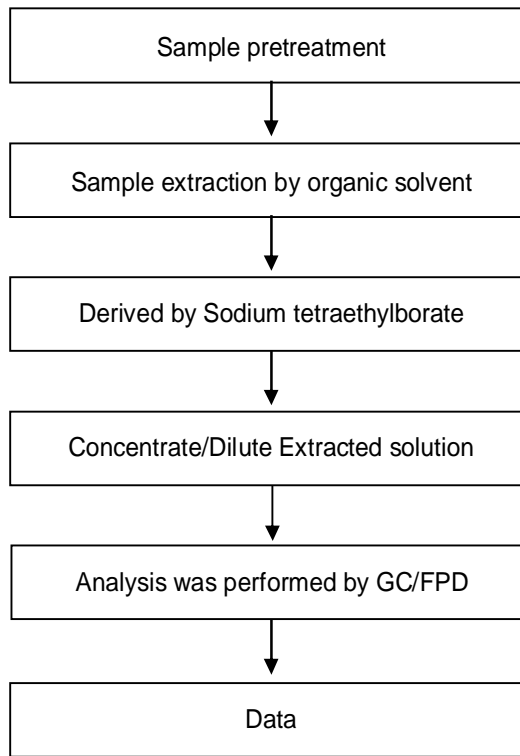
- Technician: Yaling Tu
- Supervisor: Troy Chang



MITSUBISHI GAS CHEMICAL CO., INC. ELECTRONICS MATERIAL DIVISION
 5-2, MARUNOUCHI 2-CHOME, CHIYODA-KU, TOKYO 100-8324, JAPAN

Analytical flow chart - Organic-Tin

- Technician: Yaling Tu
- Supervisor: Troy Chang



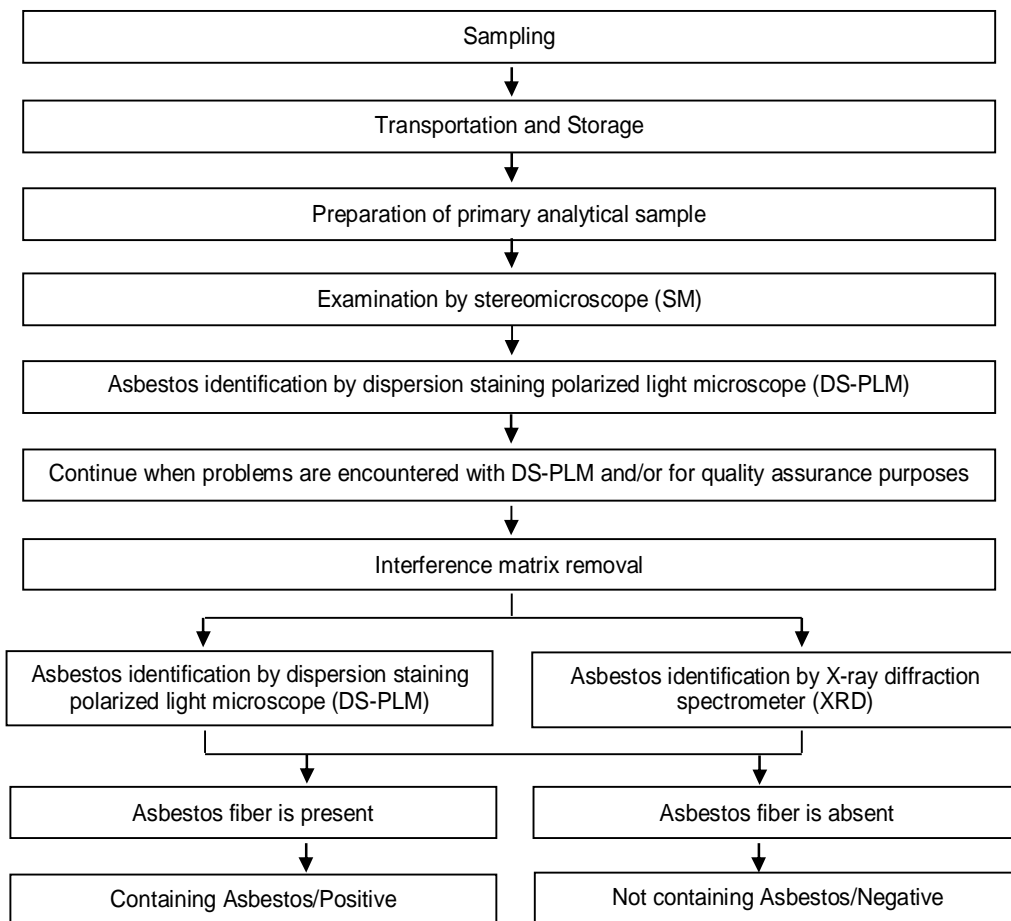
This document is issued by the Company subject to its General Conditions of Service printed overleaf, available on request or accessible at <http://www.sgs.com/en/Terms-and-Conditions.aspx> and, for electronic format documents, subject to Terms and Conditions for Electronic Documents at <https://www.sgs.com/en/terms-and-conditions/terms-e-document>. Attention is drawn to the limitation of liability, indemnification and jurisdiction issues defined therein. Any holder of this document is advised that information contained hereon reflects the Company's findings at the time of its intervention only and within the limits of client's instruction, if any. The Company's sole responsibility is to its Client and this document does not exonerate parties to a transaction from exercising all their rights and obligations under the transaction documents. This document cannot be reproduced, except in full, without prior written approval of the Company. Any unauthorized alteration, forgery or falsification of the content or appearance of this document is unlawful and offenders may be prosecuted to the fullest extent of the law. Unless otherwise stated the results shown in this test report refer only to the sample(s) tested.

MITSUBISHI GAS CHEMICAL CO., INC. ELECTRONICS MATERIAL DIVISION
 5-2, MARUNOUCHI 2-CHOME, CHIYODA-KU, TOKYO 100-8324, JAPAN

Analysis flow chart for determination of Asbestos

- Technician: Victor Kao
- Supervisor: Wendy Wei

【Reference method: EPA 600/R-93/116】



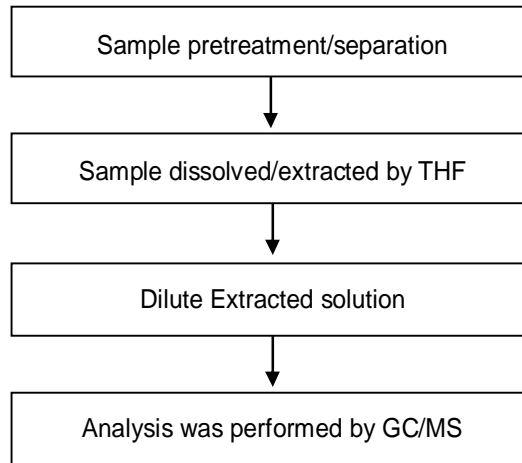
This document is issued by the Company subject to its General Conditions of Service printed overleaf, available on request or accessible at <http://www.sgs.com/en/Terms-and-Conditions.aspx> and, for electronic format documents, subject to Terms and Conditions for Electronic Documents at <https://www.sgs.com/en/terms-and-conditions/terms-e-document>. Attention is drawn to the limitation of liability, indemnification and jurisdiction issues defined therein. Any holder of this document is advised that information contained herein reflects the Company's findings at the time of its intervention only and within the limits of client's instruction, if any. The Company's sole responsibility is to its Client and this document does not exonerate parties to a transaction from exercising all their rights and obligations under the transaction documents. This document cannot be reproduced, except in full, without prior written approval of the Company. Any unauthorized alteration, forgery or falsification of the content or appearance of this document is unlawful and offenders may be prosecuted to the fullest extent of the law. Unless otherwise stated the results shown in this test report refer only to the sample(s) tested.

MITSUBISHI GAS CHEMICAL CO., INC. ELECTRONICS MATERIAL DIVISION
5-2, MARUNOUCHI 2-CHOME, CHIYODA-KU, TOKYO 100-8324, JAPAN

Analytical flow chart - Phthalate

- Technician: Yaling Tu
- Supervisor: Troy Chang

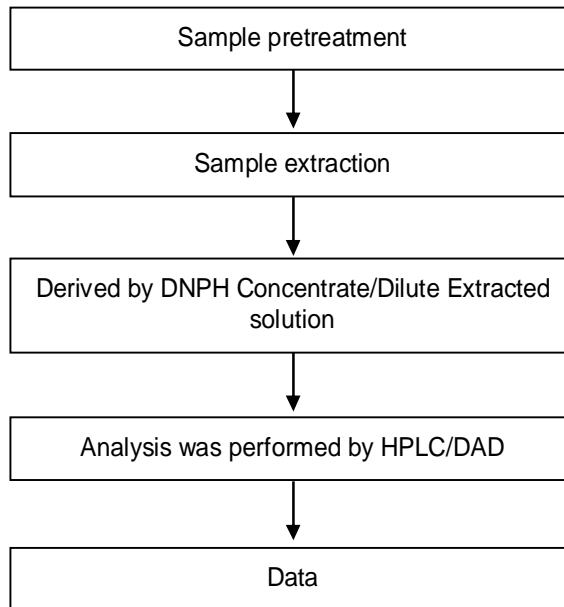
【Test method: IEC 62321-8】



MITSUBISHI GAS CHEMICAL CO., INC. ELECTRONICS MATERIAL DIVISION
 5-2, MARUNOUCHI 2-CHOME, CHIYODA-KU, TOKYO 100-8324, JAPAN

Analytical flow chart - Formaldehyde

- Technician: Yaling Tu
- Supervisor: Troy Chang

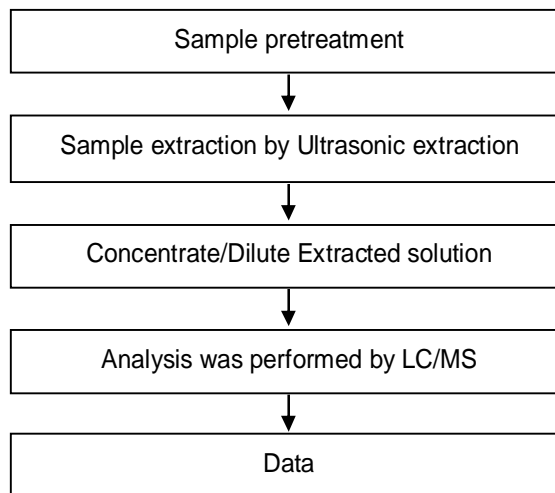


This document is issued by the Company subject to its General Conditions of Service printed overleaf, available on request or accessible at <http://www.sgs.com/en/Terms-and-Conditions.aspx> and, for electronic format documents, subject to Terms and Conditions for Electronic Documents at <https://www.sgs.com/en/terms-and-conditions/terms-e-document>. Attention is drawn to the limitation of liability, indemnification and jurisdiction issues defined therein. Any holder of this document is advised that information contained hereon reflects the Company's findings at the time of its intervention only and within the limits of client's instruction, if any. The Company's sole responsibility is to its Client and this document does not exonerate parties to a transaction from exercising all their rights and obligations under the transaction documents. This document cannot be reproduced, except in full, without prior written approval of the Company. Any unauthorized alteration, forgery or falsification of the content or appearance of this document is unlawful and offenders may be prosecuted to the fullest extent of the law. Unless otherwise stated the results shown in this test report refer only to the sample(s) tested.

MITSUBISHI GAS CHEMICAL CO., INC. ELECTRONICS MATERIAL DIVISION
5-2, MARUNOUCHI 2-CHOME, CHIYODA-KU, TOKYO 100-8324, JAPAN

Analytical flow chart - PFOA/PFOS

- Technician: Yaling Tu
- Supervisor: Troy Chang



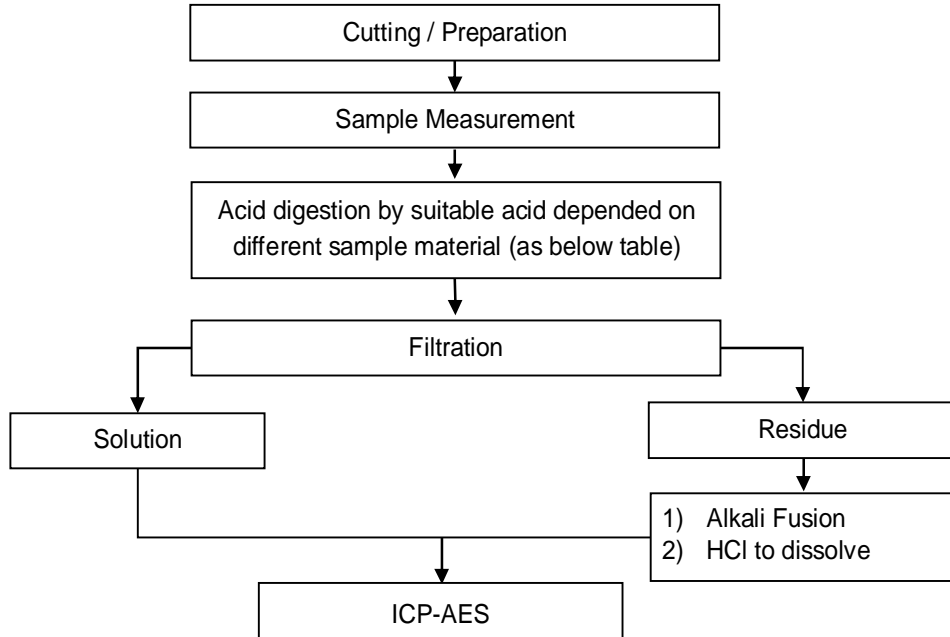
This document is issued by the Company subject to its General Conditions of Service printed overleaf, available on request or accessible at <http://www.sgs.com/en/Terms-and-Conditions.aspx> and, for electronic format documents, subject to Terms and Conditions for Electronic Documents at <https://www.sgs.com/en/terms-and-conditions/terms-e-document>. Attention is drawn to the limitation of liability, indemnification and jurisdiction issues defined therein. Any holder of this document is advised that information contained hereon reflects the Company's findings at the time of its intervention only and within the limits of client's instruction, if any. The Company's sole responsibility is to its Client and this document does not exonerate parties to a transaction from exercising all their rights and obligations under the transaction documents. This document cannot be reproduced, except in full, without prior written approval of the Company. Any unauthorized alteration, forgery or falsification of the content or appearance of this document is unlawful and offenders may be prosecuted to the fullest extent of the law. Unless otherwise stated the results shown in this test report refer only to the sample(s) tested.

MITSUBISHI GAS CHEMICAL CO., INC. ELECTRONICS MATERIAL DIVISION
 5-2, MARUNOUCHI 2-CHOME, CHIYODA-KU, TOKYO 100-8324, JAPAN

These samples were dissolved totally by pre-conditioning method according to below flow chart.

- Technician: Rita Chen
- Supervisor: Troy Chang

Flow Chart of digestion for the elements analysis performed by ICP-AES

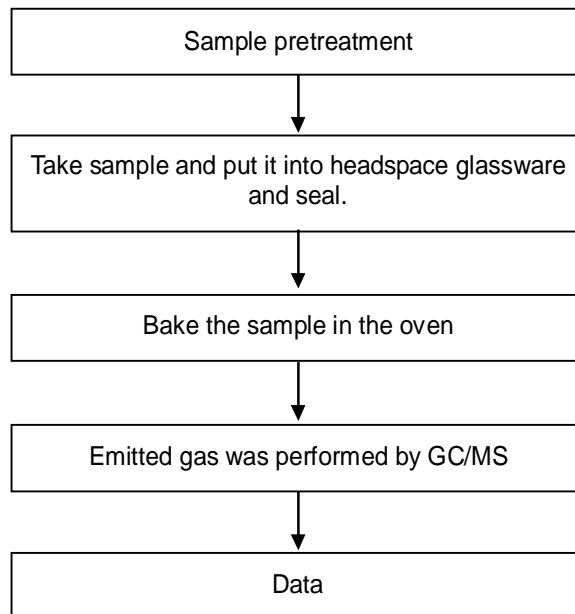


Steel, copper, aluminum, solder	Aqua regia, HNO ₃ , HCl, HF, H ₂ O ₂
Glass	HNO ₃ /HF
Gold, platinum, palladium, ceramic	Aqua regia
Silver	HNO ₃
Plastic	H ₂ SO ₄ , H ₂ O ₂ , HNO ₃ , HCl
Others	Added appropriate reagent to total digestion

MITSUBISHI GAS CHEMICAL CO., INC. ELECTRONICS MATERIAL DIVISION
 5-2, MARUNOUCHI 2-CHOME, CHIYODA-KU, TOKYO 100-8324, JAPAN

Analytical flow chart - volatile organic compounds (VOCs)

- Technician : Chun Wu
 - Supervisor : Shinjyh Chen
- 【Reference method : US EPA 5021, 5021A】

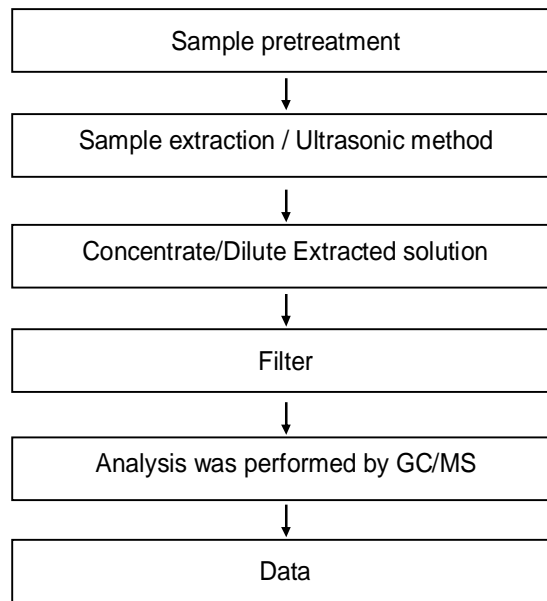


This document is issued by the Company subject to its General Conditions of Service printed overleaf, available on request or accessible at <http://www.sgs.com/en/Terms-and-Conditions.aspx> and, for electronic format documents, subject to Terms and Conditions for Electronic Documents at <https://www.sgs.com/en/terms-and-conditions/terms-e-document>. Attention is drawn to the limitation of liability, indemnification and jurisdiction issues defined therein. Any holder of this document is advised that information contained hereon reflects the Company's findings at the time of its intervention only and within the limits of client's instruction, if any. The Company's sole responsibility is to its Client and this document does not exonerate parties to a transaction from exercising all their rights and obligations under the transaction documents. This document cannot be reproduced, except in full, without prior written approval of the Company. Any unauthorized alteration, forgery or falsification of the content or appearance of this document is unlawful and offenders may be prosecuted to the fullest extent of the law. Unless otherwise stated the results shown in this test report refer only to the sample(s) tested.

MITSUBISHI GAS CHEMICAL CO., INC. ELECTRONICS MATERIAL DIVISION
 5-2, MARUNOUCHI 2-CHOME, CHIYODA-KU, TOKYO 100-8324, JAPAN

Analytical flow chart - HBCDD

- Technician: Yaling Tu
- Supervisor: Troy Chang

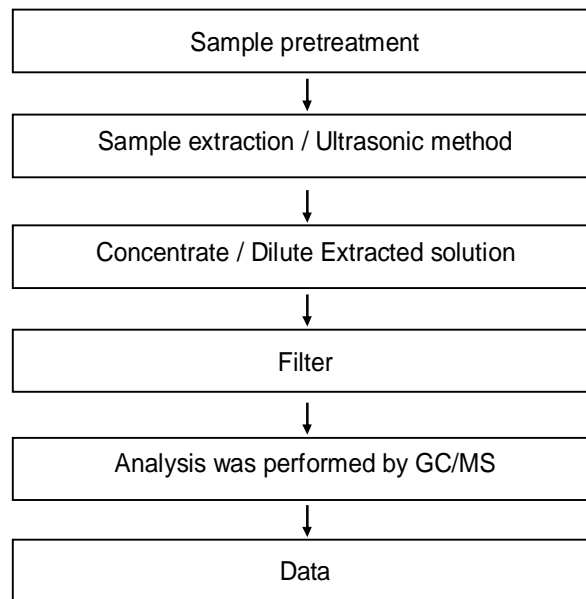


This document is issued by the Company subject to its General Conditions of Service printed overleaf, available on request or accessible at <http://www.sgs.com/en/Terms-and-Conditions.aspx> and, for electronic format documents, subject to Terms and Conditions for Electronic Documents at <https://www.sgs.com/en/terms-and-conditions/terms-e-document>. Attention is drawn to the limitation of liability, indemnification and jurisdiction issues defined therein. Any holder of this document is advised that information contained hereon reflects the Company's findings at the time of its intervention only and within the limits of client's instruction, if any. The Company's sole responsibility is to its Client and this document does not exonerate parties to a transaction from exercising all their rights and obligations under the transaction documents. This document cannot be reproduced, except in full, without prior written approval of the Company. Any unauthorized alteration, forgery or falsification of the content or appearance of this document is unlawful and offenders may be prosecuted to the fullest extent of the law. Unless otherwise stated the results shown in this test report refer only to the sample(s) tested.

MITSUBISHI GAS CHEMICAL CO., INC. ELECTRONICS MATERIAL DIVISION
 5-2, MARUNOUCHI 2-CHOME, CHIYODA-KU, TOKYO 100-8324, JAPAN

Analytical flow chart - DBBT

- Technician: Yaling Tu
- Supervisor: Troy Chang

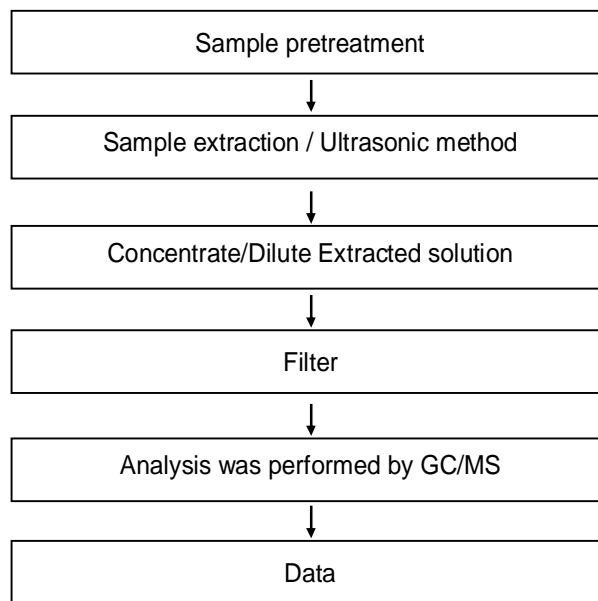


This document is issued by the Company subject to its General Conditions of Service printed overleaf, available on request or accessible at <http://www.sgs.com/en/Terms-and-Conditions.aspx> and, for electronic format documents, subject to Terms and Conditions for Electronic Documents at <https://www.sgs.com/en/terms-and-conditions/terms-e-document>. Attention is drawn to the limitation of liability, indemnification and jurisdiction issues defined therein. Any holder of this document is advised that information contained hereon reflects the Company's findings at the time of its intervention only and within the limits of client's instruction, if any. The Company's sole responsibility is to its Client and this document does not exonerate parties to a transaction from exercising all their rights and obligations under the transaction documents. This document cannot be reproduced, except in full, without prior written approval of the Company. Any unauthorized alteration, forgery or falsification of the content or appearance of this document is unlawful and offenders may be prosecuted to the fullest extent of the law. Unless otherwise stated the results shown in this test report refer only to the sample(s) tested.

MITSUBISHI GAS CHEMICAL CO., INC. ELECTRONICS MATERIAL DIVISION
 5-2, MARUNOUCHI 2-CHOME, CHIYODA-KU, TOKYO 100-8324, JAPAN

Analytical flow chart - Mirex

- Technician: Yaling Tu
- Supervisor: Troy Chang



This document is issued by the Company subject to its General Conditions of Service printed overleaf, available on request or accessible at <http://www.sgs.com/en/Terms-and-Conditions.aspx> and, for electronic format documents, subject to Terms and Conditions for Electronic Documents at <https://www.sgs.com/en/terms-and-conditions/terms-e-document>. Attention is drawn to the limitation of liability, indemnification and jurisdiction issues defined therein. Any holder of this document is advised that information contained hereon reflects the Company's findings at the time of its intervention only and within the limits of client's instruction, if any. The Company's sole responsibility is to its Client and this document does not exonerate parties to a transaction from exercising all their rights and obligations under the transaction documents. This document cannot be reproduced, except in full, without prior written approval of the Company. Any unauthorized alteration, forgery or falsification of the content or appearance of this document is unlawful and offenders may be prosecuted to the fullest extent of the law. Unless otherwise stated the results shown in this test report refer only to the sample(s) tested.

Test Report

No. : CE/2019/41118

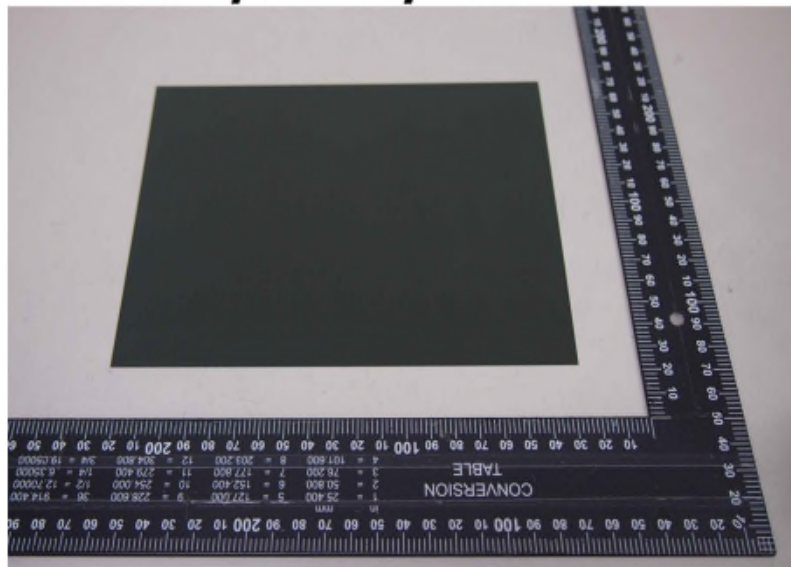
Date : 2019/04/16

Page : 37 of 37

MITSUBISHI GAS CHEMICAL CO., INC. ELECTRONICS MATERIAL DIVISION
5-2, MARUNOUCHI 2-CHOME, CHIYODA-KU, TOKYO 100-8324, JAPAN

* The tested sample / part is marked by an arrow if it's shown on the photo. *

CE/2019/41118



** End of Report **