

Test Report

No. : CE/2019/C5175

Date : 2020/01/15

Page : 1 of 20

HAESUNGDS CO., LTD.

(SEONGJU-DONG) 726, UNGNAM-RO, SEONGSAN-GU, CHANG-WON-SI, GYEONGSANGNAM-DO, KOREA

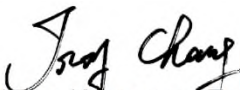
The following samples was/were submitted and identified by/on behalf of the applicant as :

Sample Submitted By : HAESUNGDS CO., LTD.
Sample Description : LEAD FRAME
SGS Korea File No. : AYGA19-05222
Style/Item No. : C7025-uPPF
Sample Material : METAL ALLOY
Sample Receiving Date : 2019/12/27
Testing Period : 2019/12/27 to 2020/01/14

Test Requested :

- (1) As specified by client, with reference to RoHS 2011/65/EU Annex II and amending Directive (EU) 2015/863 to determine Cadmium, Lead, Mercury, Cr(VI), PBBs, PBDEs, DBP, BBP, DEHP, DIBP contents in the submitted sample(s).
- (2) Please refer to next pages for the other item(s).

Test Result(s) : Please refer to following pages.


Troy Chang / Manager - Tech
Signed for and behalf of
SGS TAIWAN LTD.
Chemical Laboratory - Taipei



This document is issued by the Company subject to its General Conditions of Service printed overleaf, available on request or accessible at <http://www.sgs.com/en/Terms-and-Conditions.aspx> and, for electronic format documents, subject to Terms and Conditions for Electronic Documents at <https://www.sgs.com/en/terms-and-conditions/terms-e-document>. Attention is drawn to the limitation of liability, indemnification and jurisdiction issues defined therein. Any holder of this document is advised that information contained hereon reflects the Company's findings at the time of its intervention only and within the limits of client's instruction, if any. The Company's sole responsibility is to its Client and this document does not exonerate parties to a transaction from exercising all their rights and obligations under the transaction documents. This document cannot be reproduced, except in full, without prior written approval of the Company. Any unauthorized alteration, forgery or falsification of the content or appearance of this document is unlawful and offenders may be prosecuted to the fullest extent of the law. Unless otherwise stated the results shown in this test report refer only to the sample(s) tested.

Test Report

No. : CE/2019/C5175

Date : 2020/01/15

Page : 2 of 20

HAESUNGDS CO., LTD.

(SEONGJU-DONG) 726, UNGNAM-RO, SEONGSAN-GU, CHANG-WON-SI, GYEONGSANGNAM-DO, KOREA

Test Result(s)

PART NAME No.1 : SILVER COLORED METAL SHEET

| Test Item(s) | Unit | Method | MDL | Result |
|--------------------------------|--------------------|--|------|--------|
| | | | | No.1 |
| Cadmium (Cd) | mg/kg | With reference to IEC 62321-5 (2013) and performed by ICP-OES. | 2 | n.d. |
| Lead (Pb) | mg/kg | With reference to IEC 62321-5 (2013) and performed by ICP-OES. | 2 | n.d. |
| Mercury (Hg) | mg/kg | With reference to IEC 62321-4:2013+AMD1:2017 and performed by ICP-OES. | 2 | n.d. |
| Hexavalent Chromium Cr(VI)(#2) | µg/cm ² | With reference to IEC 62321-7-1 (2015) and performed by UV-VIS. | 0.10 | n.d. |
| Sum of PBBs | mg/kg | With reference to IEC 62321-6 (2015) and performed by GC/MS. | - | n.d. |
| Monobromobiphenyl | mg/kg | | 5 | n.d. |
| Dibromobiphenyl | mg/kg | | 5 | n.d. |
| Tribromobiphenyl | mg/kg | | 5 | n.d. |
| Tetrabromobiphenyl | mg/kg | | 5 | n.d. |
| Pentabromobiphenyl | mg/kg | | 5 | n.d. |
| Hexabromobiphenyl | mg/kg | | 5 | n.d. |
| Heptabromobiphenyl | mg/kg | | 5 | n.d. |
| Octabromobiphenyl | mg/kg | | 5 | n.d. |
| Nonabromobiphenyl | mg/kg | | 5 | n.d. |
| Decabromobiphenyl | mg/kg | | 5 | n.d. |
| Sum of PBDEs | mg/kg | | - | n.d. |
| Monobromodiphenyl ether | mg/kg | | 5 | n.d. |
| Dibromodiphenyl ether | mg/kg | | 5 | n.d. |
| Tribromodiphenyl ether | mg/kg | | 5 | n.d. |
| Tetrabromodiphenyl ether | mg/kg | | 5 | n.d. |
| Pentabromodiphenyl ether | mg/kg | | 5 | n.d. |
| Hexabromodiphenyl ether | mg/kg | | 5 | n.d. |
| Heptabromodiphenyl ether | mg/kg | | 5 | n.d. |
| Octabromodiphenyl ether | mg/kg | | 5 | n.d. |
| Nonabromodiphenyl ether | mg/kg | 5 | n.d. | |
| Decabromodiphenyl ether | mg/kg | 5 | n.d. | |

This document is issued by the Company subject to its General Conditions of Service printed overleaf, available on request or accessible at <http://www.sgs.com/en/Terms-and-Conditions.aspx> and, for electronic format documents, subject to Terms and Conditions for Electronic Documents at <https://www.sgs.com/en/terms-and-conditions/terms-e-document>. Attention is drawn to the limitation of liability, indemnification and jurisdiction issues defined therein. Any holder of this document is advised that information contained hereon reflects the Company's findings at the time of its intervention only and within the limits of client's instruction, if any. The Company's sole responsibility is to its Client and this document does not exonerate parties to a transaction from exercising all their rights and obligations under the transaction documents. This document cannot be reproduced, except in full, without prior written approval of the Company. Any unauthorized alteration, forgery or falsification of the content or appearance of this document is unlawful and offenders may be prosecuted to the fullest extent of the law. Unless otherwise stated the results shown in this test report refer only to the sample(s) tested.

Test Report

No. : CE/2019/C5175

Date : 2020/01/15

Page : 3 of 20

HAESUNGDS CO., LTD.

(SEONGJU-DONG) 726, UNGNAM-RO, SEONGSAN-GU, CHANG-WON-SI, GYEONGSANGNAM-DO, KOREA

| Test Item(s) | Unit | Method | MDL | Result |
|---|-------|---|----------|--------|
| | | | | No.1 |
| Polychlorinated Biphenyls (PCBs) (CAS No.: 1336-36-3) | mg/kg | With reference to US EPA 3550C (2007). Analysis was performed by GC/MS. | 0.5 | n.d. |
| Polychlorinated Naphthalene (PCNs) | mg/kg | With reference to US EPA 3550C (2007). Analysis was performed by GC/MS. | 5 | n.d. |
| Polychlorinated Terphenyls (PCTs) | mg/kg | With reference to US EPA 3550C (2007). Analysis was performed by GC/MS. | 0.5 | n.d. |
| Alkanes, C10-13, chloro (Short Chain Chlorinated Paraffins) (CAS No.: 85535-84-8) | mg/kg | With reference to US EPA 3550C (2007). Analysis was performed by GC/MS. | 100 | n.d. |
| Tributyl Tin (TBT) | mg/kg | With reference to ISO 17353 (2004). Analysis was performed by GC/FPD. | 0.03 | n.d. |
| Triphenyl Tin (TphT) | mg/kg | With reference to ISO 17353 (2004). Analysis was performed by GC/FPD. | 0.03 | n.d. |
| Dibutyl Tin (DBT) | mg/kg | With reference to ISO 17353 (2004). Analysis was performed by GC/FPD. | 0.03 | n.d. |
| Diocetyl Tin (DOT) | mg/kg | With reference to ISO 17353 (2004). Analysis was performed by GC/FPD. | 0.03 | n.d. |
| Bis(tributyltin)oxide (TBTO) (CAS No.: 56-35-9) | mg/kg | With reference to ISO 17353 (2004). Analysis was performed by GC/FPD. Calculated from the result of Tributyl Tin (TBT). | 0.03 (▲) | n.d. |
| Halogen | | | | |
| Halogen-Fluorine (F) (CAS No.: 14762-94-8) | mg/kg | With reference to BS EN 14582 (2016). Analysis was performed by IC. | 50 | n.d. |
| Halogen-Chlorine (Cl) (CAS No.: 22537-15-1) | mg/kg | With reference to BS EN 14582 (2016). Analysis was performed by IC. | 50 | n.d. |
| Halogen-Bromine (Br) (CAS No.: 10097-32-2) | mg/kg | With reference to BS EN 14582 (2016). Analysis was performed by IC. | 50 | n.d. |
| Halogen-Iodine (I) (CAS No.: 14362-44-8) | mg/kg | With reference to BS EN 14582 (2016). Analysis was performed by IC. | 50 | n.d. |
| Antimony (Sb) | mg/kg | With reference to US EPA 3052 (1996). Analysis was performed by ICP-OES. | 2 | n.d. |
| Arsenic (As) | mg/kg | With reference to US EPA 3052 (1996). Analysis was performed by ICP-OES. | 2 | n.d. |
| Beryllium (Be) | mg/kg | With reference to US EPA 3052 (1996). Analysis was performed by ICP-OES. | 2 | n.d. |

This document is issued by the Company subject to its General Conditions of Service printed overleaf, available on request or accessible at <http://www.sgs.com/en/Terms-and-Conditions.aspx> and, for electronic format documents, subject to Terms and Conditions for Electronic Documents at <https://www.sgs.com/en/terms-and-conditions/terms-e-document>. Attention is drawn to the limitation of liability, indemnification and jurisdiction issues defined therein. Any holder of this document is advised that information contained herein reflects the Company's findings at the time of its intervention only and within the limits of client's instruction, if any. The Company's sole responsibility is to its Client and this document does not exonerate parties to a transaction from exercising all their rights and obligations under the transaction documents. This document cannot be reproduced, except in full, without prior written approval of the law. Any unauthorized alteration, forgery or falsification of the content or appearance of this document is unlawful and offenders may be prosecuted to the fullest extent of the law. Unless otherwise stated the results shown in this test report refer only to the sample(s) tested.

Test Report

No. : CE/2019/C5175

Date : 2020/01/15

Page : 4 of 20

HAESUNGDS CO., LTD.

(SEONGJU-DONG) 726, UNGNAM-RO, SEONGSAN-GU, CHANG-WON-SI, GYEONGSANGNAM-DO, KOREA

| Test Item(s) | Unit | Method | MDL | Result |
|--|-------|---|-----|----------|
| | | | | No.1 |
| Perfluorooctane sulfonates (PFOS-Acid, Metal Salt, Amide) | mg/kg | With reference to US EPA 3550C (2007). Analysis was performed by LC/MS. | 10 | n.d. |
| PFOA (CAS No.: 335-67-1) | mg/kg | With reference to US EPA 3550C (2007). Analysis was performed by LC/MS. | 10 | n.d. |
| Polyvinyl chloride (PVC) | ** | Analysis was performed by FTIR and FLAME Test. | - | Negative |
| DBP (Dibutyl phthalate) (CAS No.: 84-74-2) | mg/kg | With reference to IEC 62321-8 (2017). Analysis was performed by GC/MS. | 50 | n.d. |
| BBP (Butyl Benzyl phthalate) (CAS No.: 85-68-7) | mg/kg | With reference to IEC 62321-8 (2017). Analysis was performed by GC/MS. | 50 | n.d. |
| DEHP (Di- (2-ethylhexyl) phthalate) (CAS No.: 117-81-7) | mg/kg | With reference to IEC 62321-8 (2017). Analysis was performed by GC/MS. | 50 | n.d. |
| DIBP (Di-isobutyl phthalate) (CAS No.: 84-69-5) | mg/kg | With reference to IEC 62321-8 (2017). Analysis was performed by GC/MS. | 50 | n.d. |
| DIHP (1,2-Benzenedicarboxylic acid, di-C6-8-branched alkyl esters, C7-rich) (CAS No.: 71888-89-6) | mg/kg | With reference to IEC 62321-8 (2017). Analysis was performed by GC/MS. | 50 | n.d. |
| DHNP (1,2-Benzenedicarboxylic acid, di-C7-11-branched and linear alkyl esters) (CAS No.: 68515-42-4) | mg/kg | With reference to IEC 62321-8 (2017). Analysis was performed by GC/MS. | 50 | n.d. |
| DMEP (Bis (2-methoxyethyl) phthalate) (CAS No.: 117-82-8) | mg/kg | With reference to IEC 62321-8 (2017). Analysis was performed by GC/MS. | 50 | n.d. |
| DINP (Di-isononyl phthalate) (CAS No.: 28553-12-0; 68515-48-0) | mg/kg | With reference to IEC 62321-8 (2017). Analysis was performed by GC/MS. | 50 | n.d. |
| DIDP (Di-isodecyl phthalate) (CAS No.: 26761-40-0; 68515-49-1) | mg/kg | With reference to IEC 62321-8 (2017). Analysis was performed by GC/MS. | 50 | n.d. |
| DNOP (Di-n-octyl phthalate) (CAS No.: 117-84-0) | mg/kg | With reference to IEC 62321-8 (2017). Analysis was performed by GC/MS. | 50 | n.d. |
| DNHP (Di-n-hexyl phthalate) (CAS No.: 84-75-3) | mg/kg | With reference to IEC 62321-8 (2017). Analysis was performed by GC/MS. | 50 | n.d. |
| DNPP (Di-n-pentyl phthalate) (CAS No.: 131-18-0) | mg/kg | With reference to IEC 62321-8 (2017). Analysis was performed by GC/MS. | 50 | n.d. |

This document is issued by the Company subject to its General Conditions of Service printed overleaf, available on request or accessible at <http://www.sgs.com/en/Terms-and-Conditions.aspx> and, for electronic format documents, subject to Terms and Conditions for Electronic Documents at <https://www.sgs.com/en/terms-and-conditions/terms-e-document>. Attention is drawn to the limitation of liability, indemnification and jurisdiction issues defined therein. Any holder of this document is advised that information contained hereon reflects the Company's findings at the time of its intervention only and within the limits of client's instruction, if any. The Company's sole responsibility is to its Client and this document does not exonerate parties to a transaction from exercising all their rights and obligations under the transaction documents. This document cannot be reproduced, except in full, without prior written approval of the Company. Any unauthorized alteration, forgery or falsification of the content or appearance of this document is unlawful and offenders may be prosecuted to the fullest extent of the law. Unless otherwise stated the results shown in this test report refer only to the sample(s) tested.

Test Report

No. : CE/2019/C5175

Date : 2020/01/15

Page : 5 of 20

HAESUNGDS CO., LTD.

(SEONGJU-DONG) 726, UNGNAM-RO, SEONGSAN-GU, CHANG-WON-SI, GYEONGSANGNAM-DO, KOREA

| Test Item(s) | Unit | Method | MDL | Result |
|--|-------|--|-----|--------|
| | | | | No.1 |
| Hexabromocyclododecane (HBCDD) and all major diastereoisomers identified (α -HBCDD, β -HBCDD, γ -HBCDD) (CAS No.: 25637-99-4 and 3194-55-6 (134237-51-7, 134237-50-6, 134237-52-8)) | mg/kg | With reference to IEC 62321 (2008). Analysis was performed by GC/MS. | 5 | n.d. |
| NPIPP (N-pentyl iso-pentyl phthalate) (CAS No.: 776297-69-9) | mg/kg | With reference to IEC 62321-8 (2017). Analysis was performed by GC/MS. | 50 | n.d. |
| DIPP (Di-iso-pentyl phthalate) (CAS No.: 605-50-5) | mg/kg | With reference to IEC 62321-8 (2017). Analysis was performed by GC/MS. | 50 | n.d. |
| DPP (1,2-Benzenedicarboxylic acid, dipentylester, branched and linear) (CAS No.: 84777-06-0) | mg/kg | With reference to IEC 62321-8 (2017). Analysis was performed by GC/MS. | 50 | n.d. |

Note :

1. mg/kg = ppm ; 0.1wt% = 1000ppm
2. MDL = Method Detection Limit
3. n.d. = Not Detected = less than MDL
4. " - " = Not Regulated
5. ** = Qualitative analysis (No Unit)
6. Negative = Undetectable / Positive = Detectable
7. (#2) =
 - a. The sample is positive for Cr(VI) if the Cr(VI) concentration is greater than 0.13 $\mu\text{g}/\text{cm}^2$.
The sample coating is considered to contain Cr(VI)
 - b. The sample is negative for Cr(VI) if Cr(VI) is n.d. (concentration less than 0.10 $\mu\text{g}/\text{cm}^2$).
The coating is considered a non-Cr(VI) based coating
 - c. The result between 0.10 $\mu\text{g}/\text{cm}^2$ and 0.13 $\mu\text{g}/\text{cm}^2$ is considered to be inconclusive - unavoidable coating variations may influence the determination.
8. (▲) : The MDL was evaluated for element / tested substance.

Conversion Formula : $AX = A \times F$

| AX | A | F |
|------------------------------|--------------------|-------|
| Bis(tributyltin)oxide (TBTO) | Tributyl Tin (TBT) | 1.024 |

Parameter Conversion Table : http://twap.sgs.com/sgsrsts/chn/download-REACH_tw.asp

This document is issued by the Company subject to its General Conditions of Service printed overleaf, available on request or accessible at <http://www.sgs.com/en/Terms-and-Conditions.aspx> and, for electronic format documents, subject to Terms and Conditions for Electronic Documents at <https://www.sgs.com/en/terms-and-conditions/terms-e-document>. Attention is drawn to the limitation of liability, indemnification and jurisdiction issues defined therein. Any holder of this document is advised that information contained hereon reflects the Company's findings at the time of its intervention only and within the limits of client's instruction, if any. The Company's sole responsibility is to its Client and this document does not exonerate parties to a transaction from exercising all their rights and obligations under the transaction documents. This document cannot be reproduced, except in full, without prior written approval of the Company. Any unauthorized alteration, forgery or falsification of the content or appearance of this document is unlawful and offenders may be prosecuted to the fullest extent of the law. Unless otherwise stated the results shown in this test report refer only to the sample(s) tested.

Test Report

No. : CE/2019/C5175

Date : 2020/01/15

Page : 6 of 20

HAESUNGDS CO., LTD.

(SEONGJU-DONG) 726, UNGNAM-RO, SEONGSAN-GU, CHANG-WON-SI, GYEONGSANGNAM-DO, KOREA

PFOS Reference Information : POPs - (EU) 2019/1021

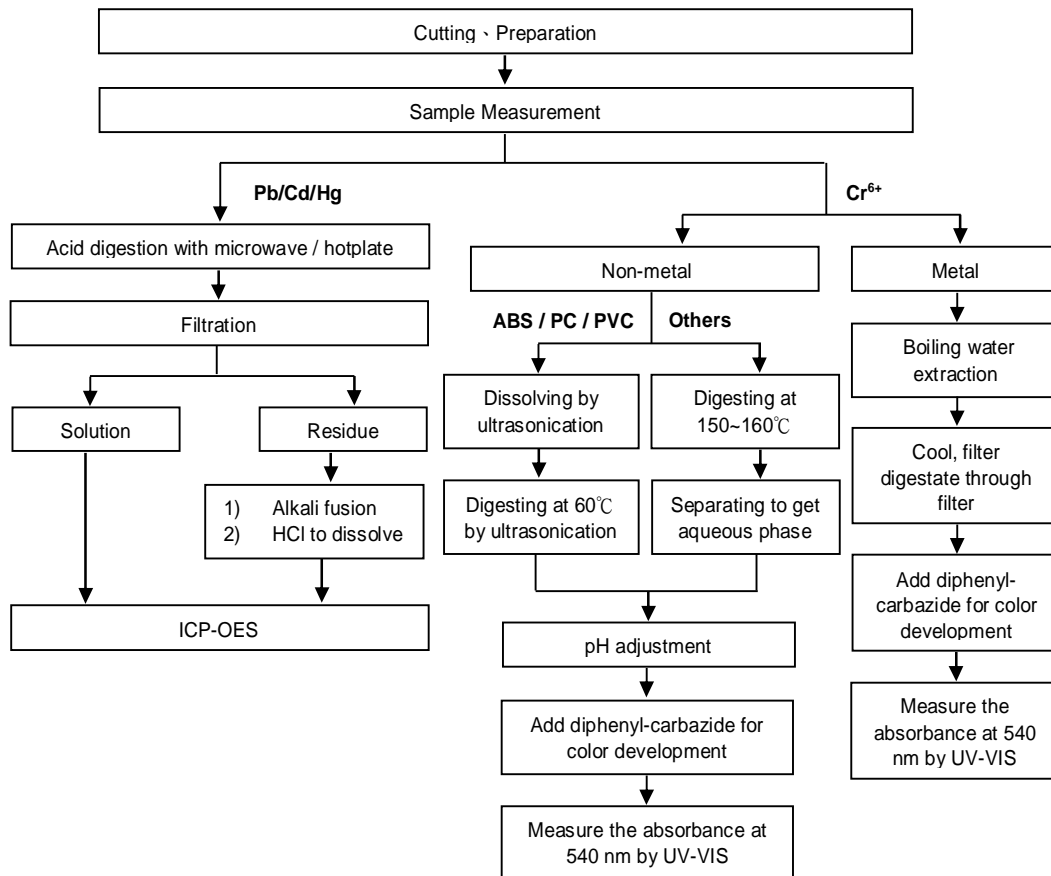
Outlawing PFOS as substances or preparations in concentrations above 0.001% (10ppm), in semi-finished products or articles or parts at a level above 0.1%(1000ppm), in textiles or other coated materials above 1µg/m².

This document is issued by the Company subject to its General Conditions of Service printed overleaf, available on request or accessible at <http://www.sgs.com/en/Terms-and-Conditions.aspx> and, for electronic format documents, subject to Terms and Conditions for Electronic Documents at <https://www.sgs.com/en/terms-and-conditions/terms-e-document>. Attention is drawn to the limitation of liability, indemnification and jurisdiction issues defined therein. Any holder of this document is advised that information contained hereon reflects the Company's findings at the time of its intervention only and within the limits of client's instruction, if any. The Company's sole responsibility is to its Client and this document does not exonerate parties to a transaction from exercising all their rights and obligations under the transaction documents. This document cannot be reproduced, except in full, without prior written approval of the Company. Any unauthorized alteration, forgery or falsification of the content or appearance of this document is unlawful and offenders may be prosecuted to the fullest extent of the law. Unless otherwise stated the results shown in this test report refer only to the sample(s) tested.

Analytical flow chart of Heavy Metal

These samples were dissolved totally by pre-conditioning method according to below flow chart. (Cr⁶⁺ test method excluded)

- Technician : Rita Chen
- Supervisor: Troy Chang

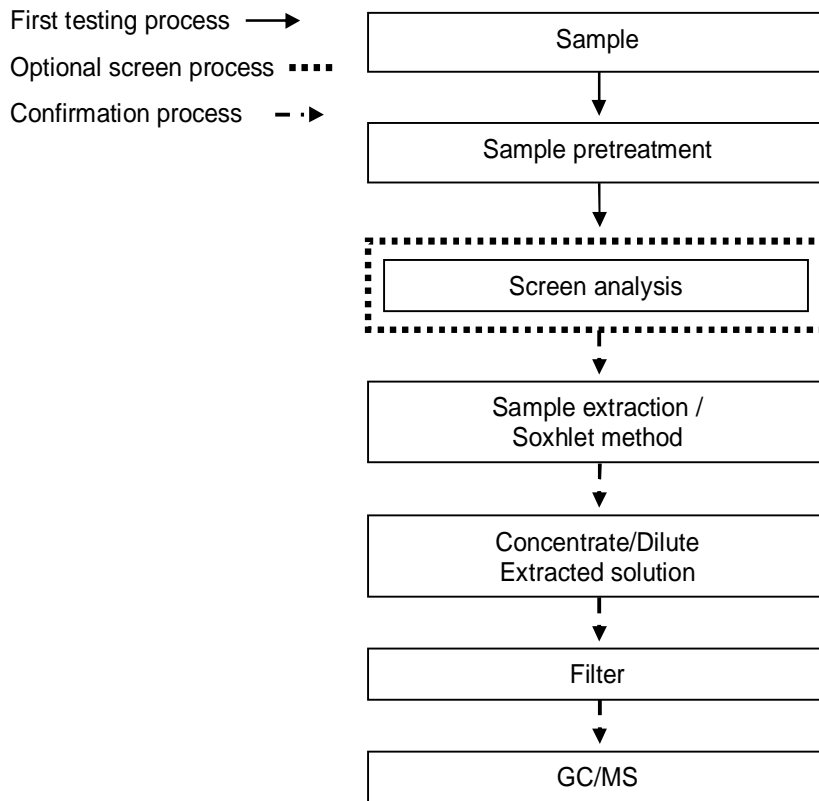


HAESUNGDS CO., LTD.

(SEONGJU-DONG) 726, UNGNAM-RO, SEONGSAN-GU, CHANG-WON-SI, GYEONGSANGNAM-DO, KOREA

Analytical flow chart – PBB / PBDE

- Technician : Yaling Tu
- Supervisor: Troy Chang



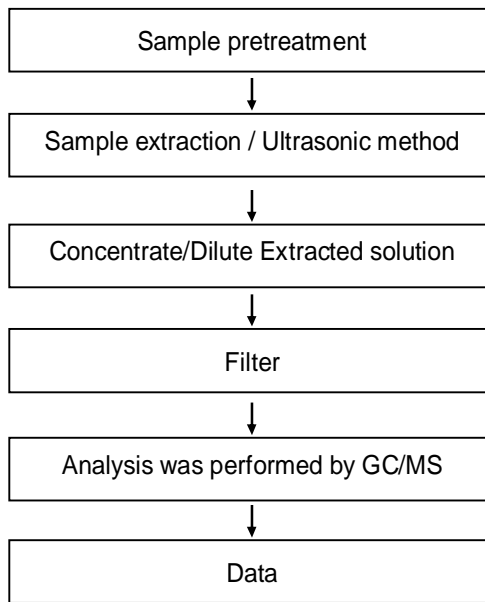
This document is issued by the Company subject to its General Conditions of Service printed overleaf, available on request or accessible at <http://www.sgs.com/en/Terms-and-Conditions.aspx> and, for electronic format documents, subject to Terms and Conditions for Electronic Documents at <https://www.sgs.com/en/terms-and-conditions/terms-e-document>. Attention is drawn to the limitation of liability, indemnification and jurisdiction issues defined therein. Any holder of this document is advised that information contained hereon reflects the Company's findings at the time of its intervention only and within the limits of client's instruction, if any. The Company's sole responsibility is to its Client and this document does not exonerate parties to a transaction from exercising all their rights and obligations under the transaction documents. This document cannot be reproduced, except in full, without prior written approval of the Company. Any unauthorized alteration, forgery or falsification of the content or appearance of this document is unlawful and offenders may be prosecuted to the fullest extent of the law. Unless otherwise stated the results shown in this test report refer only to the sample(s) tested.

HAESUNGDS CO., LTD.

(SEONGJU-DONG) 726, UNGNAM-RO, SEONGSAN-GU, CHANG-WON-SI, GYEONGSANGNAM-DO, KOREA

Analytical flow chart - PCBs

- Technician: Yaling Tu
- Supervisor: Troy Chang



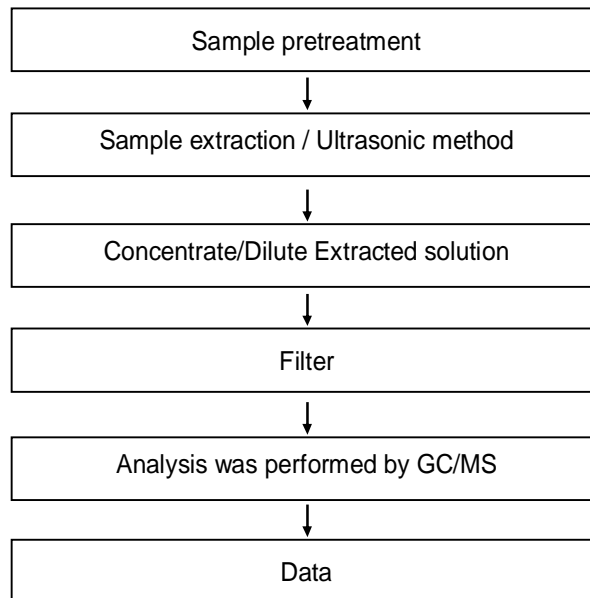
This document is issued by the Company subject to its General Conditions of Service printed overleaf, available on request or accessible at <http://www.sgs.com/en/Terms-and-Conditions.aspx> and, for electronic format documents, subject to Terms and Conditions for Electronic Documents at <https://www.sgs.com/en/terms-and-conditions/terms-e-document>. Attention is drawn to the limitation of liability, indemnification and jurisdiction issues defined therein. Any holder of this document is advised that information contained hereon reflects the Company's findings at the time of its intervention only and within the limits of client's instruction, if any. The Company's sole responsibility is to its Client and this document does not exonerate parties to a transaction from exercising all their rights and obligations under the transaction documents. This document cannot be reproduced, except in full, without prior written approval of the Company. Any unauthorized alteration, forgery or falsification of the content or appearance of this document is unlawful and offenders may be prosecuted to the fullest extent of the law. Unless otherwise stated the results shown in this test report refer only to the sample(s) tested.

HAESUNGDS CO., LTD.

(SEONGJU-DONG) 726, UNGNAM-RO, SEONGSAN-GU, CHANG-WON-SI, GYEONGSANGNAM-DO, KOREA

Analytical flow chart - PCNs

- Technician: Yaling Tu
- Supervisor: Troy Chang



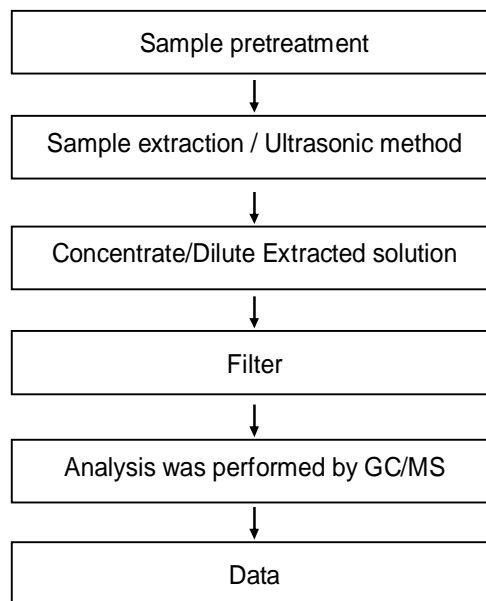
This document is issued by the Company subject to its General Conditions of Service printed overleaf, available on request or accessible at <http://www.sgs.com/en/Terms-and-Conditions.aspx> and, for electronic format documents, subject to Terms and Conditions for Electronic Documents at <https://www.sgs.com/en/terms-and-conditions/terms-e-document>. Attention is drawn to the limitation of liability, indemnification and jurisdiction issues defined therein. Any holder of this document is advised that information contained herein reflects the Company's findings at the time of its intervention only and within the limits of client's instruction, if any. The Company's sole responsibility is to its Client and this document does not exonerate parties to a transaction from exercising all their rights and obligations under the transaction documents. This document cannot be reproduced, except in full, without prior written approval of the Company. Any unauthorized alteration, forgery or falsification of the content or appearance of this document is unlawful and offenders may be prosecuted to the fullest extent of the law. Unless otherwise stated the results shown in this test report refer only to the sample(s) tested.

HAESUNGDS CO., LTD.

(SEONGJU-DONG) 726, UNGNAM-RO, SEONGSAN-GU, CHANG-WON-SI, GYEONGSANGNAM-DO, KOREA

Analytical flow chart - PCTs

- Technician: Yaling Tu
- Supervisor: Troy Chang



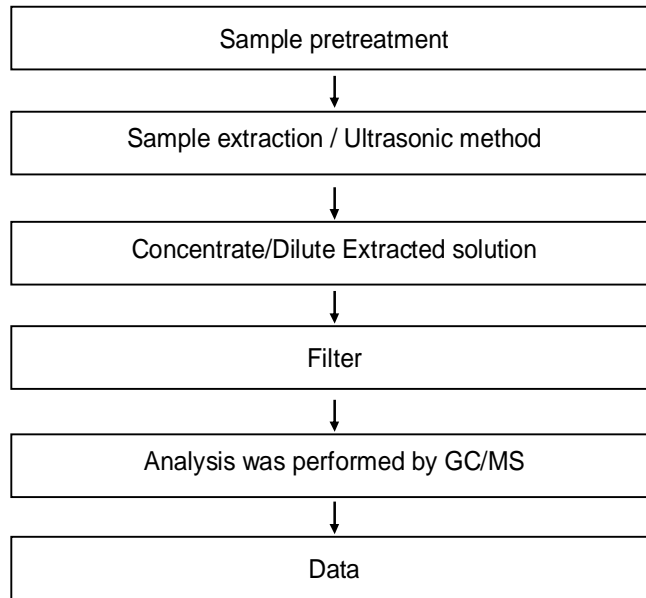
This document is issued by the Company subject to its General Conditions of Service printed overleaf, available on request or accessible at <http://www.sgs.com/en/Terms-and-Conditions.aspx> and, for electronic format documents, subject to Terms and Conditions for Electronic Documents at <https://www.sgs.com/en/terms-and-conditions/terms-e-document>. Attention is drawn to the limitation of liability, indemnification and jurisdiction issues defined therein. Any holder of this document is advised that information contained herein reflects the Company's findings at the time of its intervention only and within the limits of client's instruction, if any. The Company's sole responsibility is to its Client and this document does not exonerate parties to a transaction from exercising all their rights and obligations under the transaction documents. This document cannot be reproduced, except in full, without prior written approval of the Company. Any unauthorized alteration, forgery or falsification of the content or appearance of this document is unlawful and offenders may be prosecuted to the fullest extent of the law. Unless otherwise stated the results shown in this test report refer only to the sample(s) tested.

HAESUNGDS CO., LTD.

(SEONGJU-DONG) 726, UNGNAM-RO, SEONGSAN-GU, CHANG-WON-SI, GYEONGSANGNAM-DO, KOREA

Analytical flow chart - Chlorinated Paraffins

- Technician: Yaling Tu
- Supervisor: Troy Chang



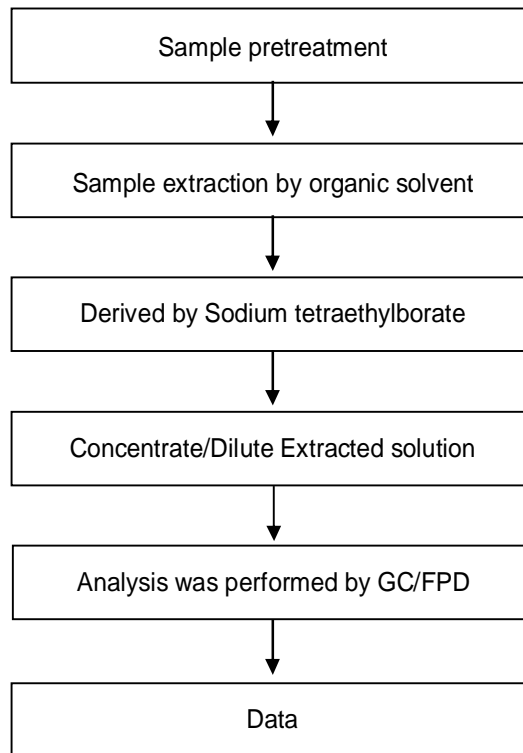
This document is issued by the Company subject to its General Conditions of Service printed overleaf, available on request or accessible at <http://www.sgs.com/en/Terms-and-Conditions.aspx> and, for electronic format documents, subject to Terms and Conditions for Electronic Documents at <https://www.sgs.com/en/terms-and-conditions/terms-e-document>. Attention is drawn to the limitation of liability, indemnification and jurisdiction issues defined therein. Any holder of this document is advised that information contained hereon reflects the Company's findings at the time of its intervention only and within the limits of client's instruction, if any. The Company's sole responsibility is to its Client and this document does not exonerate parties to a transaction from exercising all their rights and obligations under the transaction documents. This document cannot be reproduced, except in full, without prior written approval of the Company. Any unauthorized alteration, forgery or falsification of the content or appearance of this document is unlawful and offenders may be prosecuted to the fullest extent of the law. Unless otherwise stated the results shown in this test report refer only to the sample(s) tested.

HAESUNGDS CO., LTD.

(SEONGJU-DONG) 726, UNGNAM-RO, SEONGSAN-GU, CHANG-WON-SI, GYEONGSANGNAM-DO, KOREA

Analytical flow chart - Organic-Tin

- Technician: Yaling Tu
- Supervisor: Troy Chang



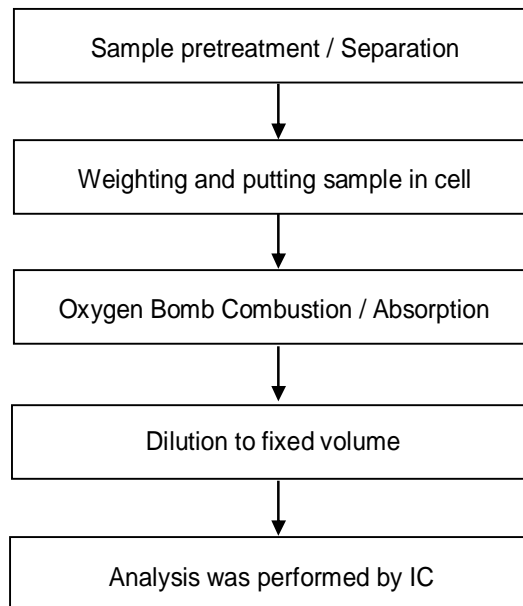
This document is issued by the Company subject to its General Conditions of Service printed overleaf, available on request or accessible at <http://www.sgs.com/en/Terms-and-Conditions.aspx> and, for electronic format documents, subject to Terms and Conditions for Electronic Documents at <https://www.sgs.com/en/terms-and-conditions/terms-e-document>. Attention is drawn to the limitation of liability, indemnification and jurisdiction issues defined therein. Any holder of this document is advised that information contained hereon reflects the Company's findings at the time of its intervention only and within the limits of client's instruction, if any. The Company's sole responsibility is to its Client and this document does not exonerate parties to a transaction from exercising all their rights and obligations under the transaction documents. This document cannot be reproduced, except in full, without prior written approval of the Company. Any unauthorized alteration, forgery or falsification of the content or appearance of this document is unlawful and offenders may be prosecuted to the fullest extent of the law. Unless otherwise stated the results shown in this test report refer only to the sample(s) tested.

HAESUNGDS CO., LTD.

(SEONGJU-DONG) 726, UNGNAM-RO, SEONGSAN-GU, CHANG-WON-SI, GYEONGSANGNAM-DO, KOREA

Analytical flow chart - Halogen

- Technician: Rita Chen
- Supervisor: Troy Chang

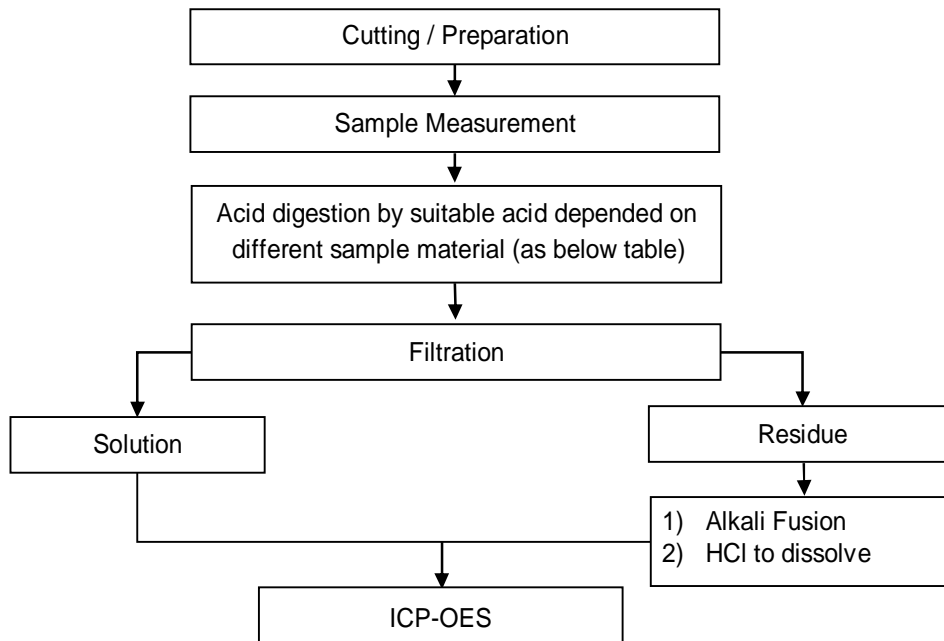


This document is issued by the Company subject to its General Conditions of Service printed overleaf, available on request or accessible at <http://www.sgs.com/en/Terms-and-Conditions.aspx> and, for electronic format documents, subject to Terms and Conditions for Electronic Documents at <https://www.sgs.com/en/terms-and-conditions/terms-e-document>. Attention is drawn to the limitation of liability, indemnification and jurisdiction issues defined therein. Any holder of this document is advised that information contained hereon reflects the Company's findings at the time of its intervention only and within the limits of client's instruction, if any. The Company's sole responsibility is to its Client and this document does not exonerate parties to a transaction from exercising all their rights and obligations under the transaction documents. This document cannot be reproduced, except in full, without prior written approval of the Company. Any unauthorized alteration, forgery or falsification of the content or appearance of this document is unlawful and offenders may be prosecuted to the fullest extent of the law. Unless otherwise stated the results shown in this test report refer only to the sample(s) tested.

These samples were dissolved totally by pre-conditioning method according to below flow chart.

- Technician: Rita Chen
- Supervisor: Troy Chang

Flow Chart of digestion for the elements analysis performed by ICP-OES



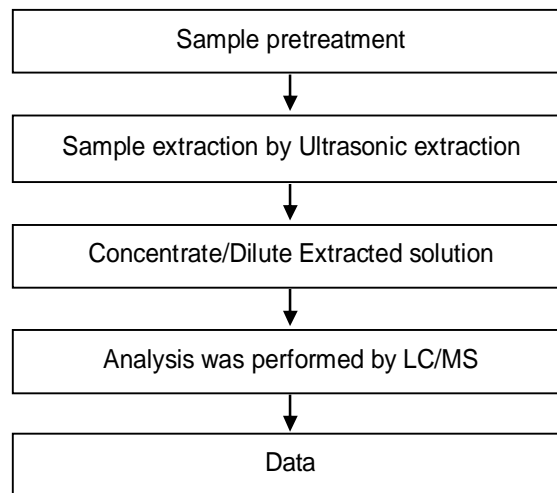
| | |
|------------------------------------|---|
| Steel, copper, aluminum, solder | Aqua regia, HNO ₃ , HCl, HF, H ₂ O ₂ |
| Glass | HNO ₃ /HF |
| Gold, platinum, palladium, ceramic | Aqua regia |
| Silver | HNO ₃ |
| Plastic | H ₂ SO ₄ , H ₂ O ₂ , HNO ₃ , HCl |
| Others | Added appropriate reagent to total digestion |

HAESUNGDS CO., LTD.

(SEONGJU-DONG) 726, UNGNAM-RO, SEONGSAN-GU, CHANG-WON-SI, GYEONGSANGNAM-DO, KOREA

Analytical flow chart - PFOA/PFOS

- Technician: Yaling Tu
- Supervisor: Troy Chang



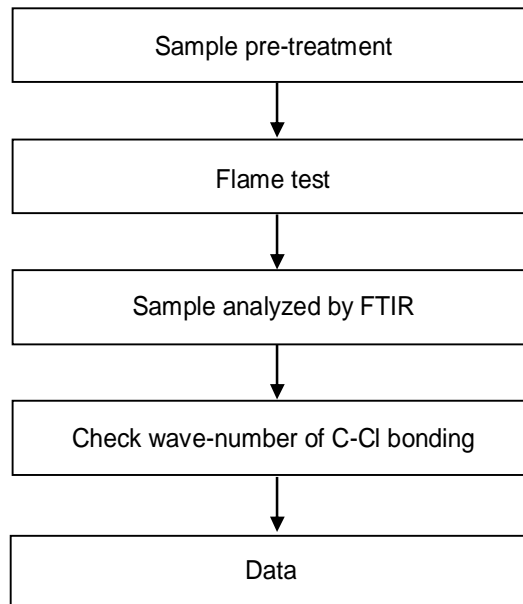
This document is issued by the Company subject to its General Conditions of Service printed overleaf, available on request or accessible at <http://www.sgs.com/en/Terms-and-Conditions.aspx> and, for electronic format documents, subject to Terms and Conditions for Electronic Documents at <https://www.sgs.com/en/terms-and-conditions/terms-e-document>. Attention is drawn to the limitation of liability, indemnification and jurisdiction issues defined therein. Any holder of this document is advised that information contained hereon reflects the Company's findings at the time of its intervention only and within the limits of client's instruction, if any. The Company's sole responsibility is to its Client and this document does not exonerate parties to a transaction from exercising all their rights and obligations under the transaction documents. This document cannot be reproduced, except in full, without prior written approval of the Company. Any unauthorized alteration, forgery or falsification of the content or appearance of this document is unlawful and offenders may be prosecuted to the fullest extent of the law. Unless otherwise stated the results shown in this test report refer only to the sample(s) tested.

HAESUNGDS CO., LTD.

(SEONGJU-DONG) 726, UNGNAM-RO, SEONGSAN-GU, CHANG-WON-SI, GYEONGSANGNAM-DO, KOREA

Analysis flow chart - PVC

- Technician: Yaling Tu
- Supervisor: Troy Chang



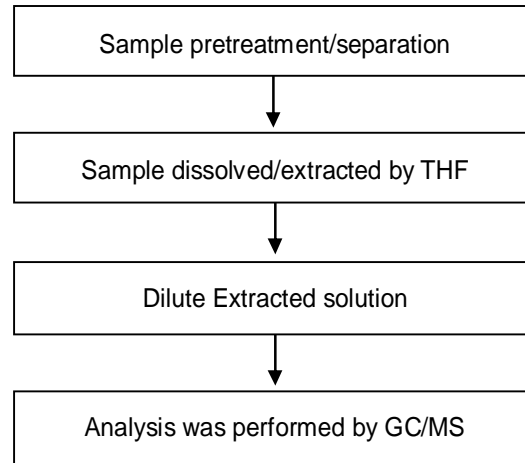
This document is issued by the Company subject to its General Conditions of Service printed overleaf, available on request or accessible at <http://www.sgs.com/en/Terms-and-Conditions.aspx> and, for electronic format documents, subject to Terms and Conditions for Electronic Documents at <https://www.sgs.com/en/terms-and-conditions/terms-e-document>. Attention is drawn to the limitation of liability, indemnification and jurisdiction issues defined therein. Any holder of this document is advised that information contained herein reflects the Company's findings at the time of its intervention only and within the limits of client's instruction, if any. The Company's sole responsibility is to its Client and this document does not exonerate parties to a transaction from exercising all their rights and obligations under the transaction documents. This document cannot be reproduced, except in full, without prior written approval of the Company. Any unauthorized alteration, forgery or falsification of the content or appearance of this document is unlawful and offenders may be prosecuted to the fullest extent of the law. Unless otherwise stated the results shown in this test report refer only to the sample(s) tested.

HAESUNGDS CO., LTD.

(SEONGJU-DONG) 726, UNGNAM-RO, SEONGSAN-GU, CHANG-WON-SI, GYEONGSANGNAM-DO, KOREA

Analytical flow chart - Phthalate

- Technician: Yaling Tu
- Supervisor: Troy Chang

【Test method: IEC 62321-8】

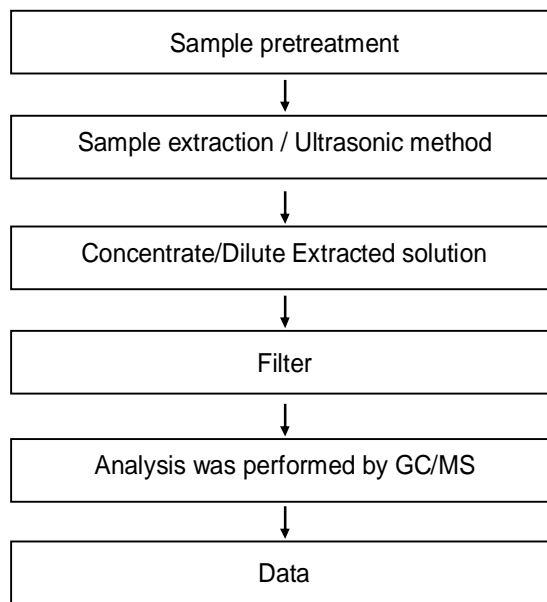
This document is issued by the Company subject to its General Conditions of Service printed overleaf, available on request or accessible at <http://www.sgs.com/en/Terms-and-Conditions.aspx> and, for electronic format documents, subject to Terms and Conditions for Electronic Documents at <https://www.sgs.com/en/terms-and-conditions/terms-e-document>. Attention is drawn to the limitation of liability, indemnification and jurisdiction issues defined therein. Any holder of this document is advised that information contained hereon reflects the Company's findings at the time of its intervention only and within the limits of client's instruction, if any. The Company's sole responsibility is to its Client and this document does not exonerate parties to a transaction from exercising all their rights and obligations under the transaction documents. This document cannot be reproduced, except in full, without prior written approval of the Company. Any unauthorized alteration, forgery or falsification of the content or appearance of this document is unlawful and offenders may be prosecuted to the fullest extent of the law. Unless otherwise stated the results shown in this test report refer only to the sample(s) tested.

HAESUNGDS CO., LTD.

(SEONGJU-DONG) 726, UNGNAM-RO, SEONGSAN-GU, CHANG-WON-SI, GYEONGSANGNAM-DO, KOREA

Analytical flow chart - HBCDD

- Technician: Yaling Tu
- Supervisor: Troy Chang



This document is issued by the Company subject to its General Conditions of Service printed overleaf, available on request or accessible at <http://www.sgs.com/en/Terms-and-Conditions.aspx> and, for electronic format documents, subject to Terms and Conditions for Electronic Documents at <https://www.sgs.com/en/terms-and-conditions/terms-e-document>. Attention is drawn to the limitation of liability, indemnification and jurisdiction issues defined therein. Any holder of this document is advised that information contained herein reflects the Company's findings at the time of its intervention only and within the limits of client's instruction, if any. The Company's sole responsibility is to its Client and this document does not exonerate parties to a transaction from exercising all their rights and obligations under the transaction documents. This document cannot be reproduced, except in full, without prior written approval of the Company. Any unauthorized alteration, forgery or falsification of the content or appearance of this document is unlawful and offenders may be prosecuted to the fullest extent of the law. Unless otherwise stated the results shown in this test report refer only to the sample(s) tested.

Test Report

No. : CE/2019/C5175

Date : 2020/01/15

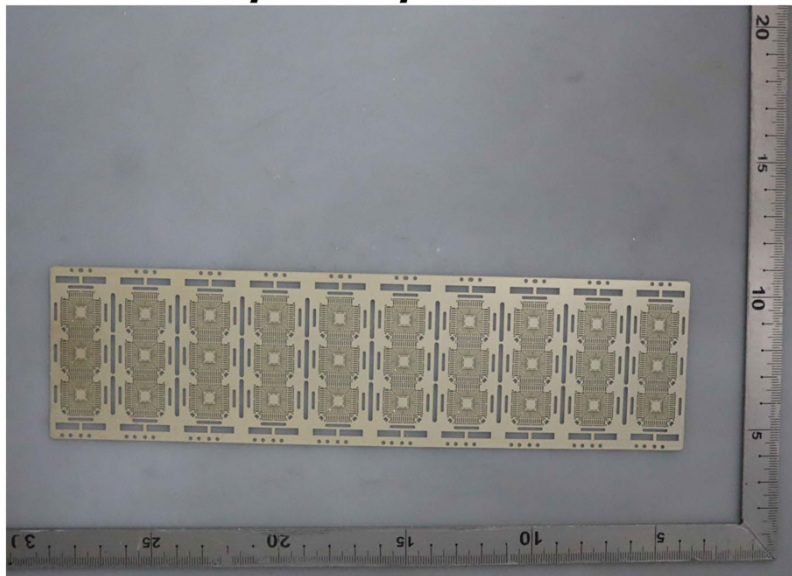
Page : 20 of 20

HAESUNGDS CO., LTD.

(SEONGJU-DONG) 726, UNGNAM-RO, SEONGSAN-GU, CHANG-WON-SI, GYEONGSANGNAM-DO, KOREA

* The tested sample / part is marked by an arrow if it's shown on the photo. *

CE/2019/C5175



** End of Report **