



SPANSION LLC  
915 DeGuigne Drive, P.O. Box 3453  
Sunnyvale, California 94088-3453, USA

April 28, 2006

**Advanced Change Notification No:** 2606

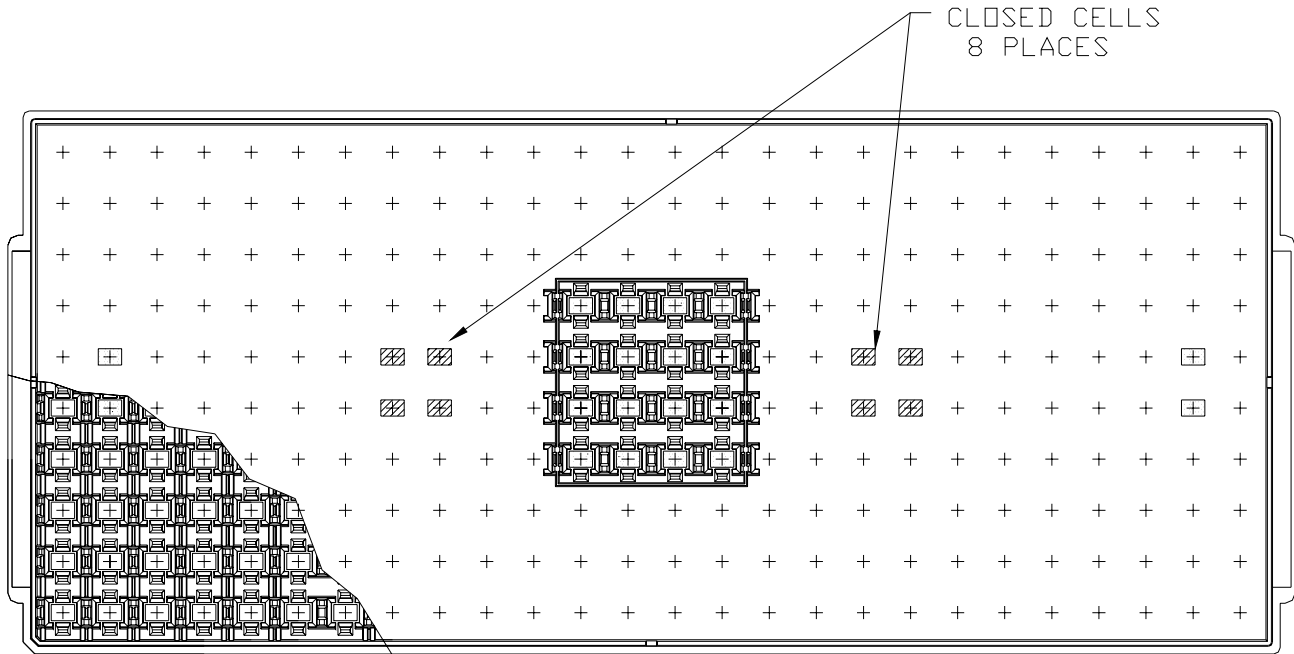
**Subject:** Changes to 9x7 mm Ball Grid Array (BGA) Packages packed in Tray

SpanSion LLC is announcing changes to the 9x7 mm Ball Grid Array (BGA) packages packed in tray. The changes apply to all SpanSion products with SpanSion, AMD, or Fujitsu ordering part numbers, packed in tray. See below for details:

- Product Identification:** All SpanSion products with SpanSion, AMD, or Fujitsu ordering part numbers, packed in tray.
- Package Types:** TLC056, TSC056, VBU056, TLC080, TSC080, and VBR080 packed in tray
- Product Line:** SpanSion™ products
- Description of Changes:** The tray for the above mentioned package types is being changed for customers receiving products with SpanSion, AMD, or Fujitsu ordering part number.
1. 8 cells will be closed. Refer Figure 1.
  2. Refer to the following and to Figure 2 for the changes to the tray pocket.
    - Flat seating plane (where the package body is supported) will change to tapered surface.
    - Pocket size will be reduced from 9.20 mm and 7.20 mm to 9.10 mm and 7.10 mm respectively.

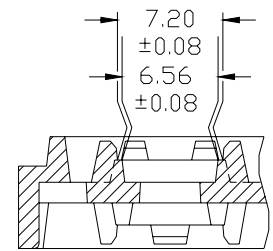
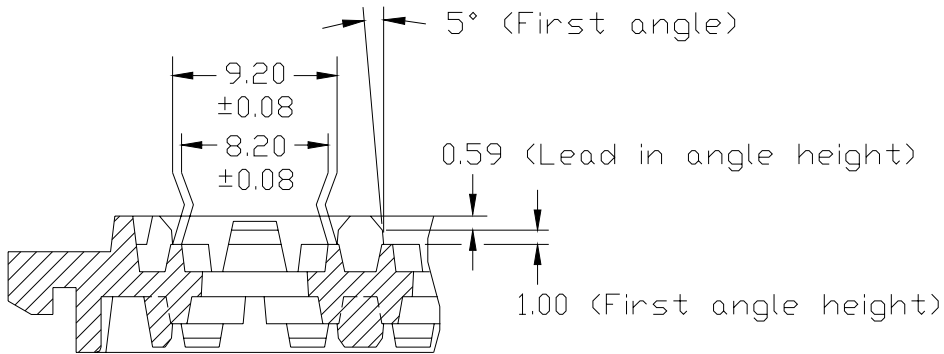


- First angle will change from 5° to 10°.
  - Lead in angle height will change from 0.59 mm to 0.69 mm.
  - First angle height will change from 1.00 mm to 0.95 mm.
3. Despite the changes mentioned above, the new tray can stack with old tray. Refer Figure 3 for the new tray drawing.

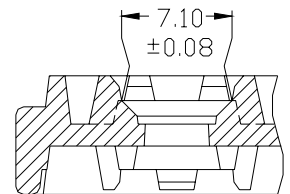
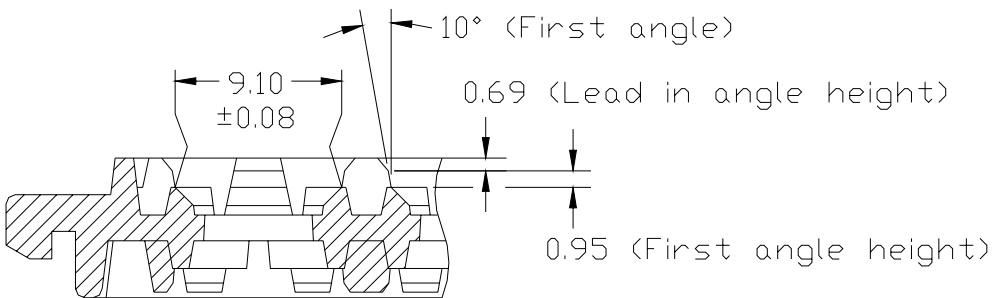


**Figure 1:** Locations of closed cells in new tray



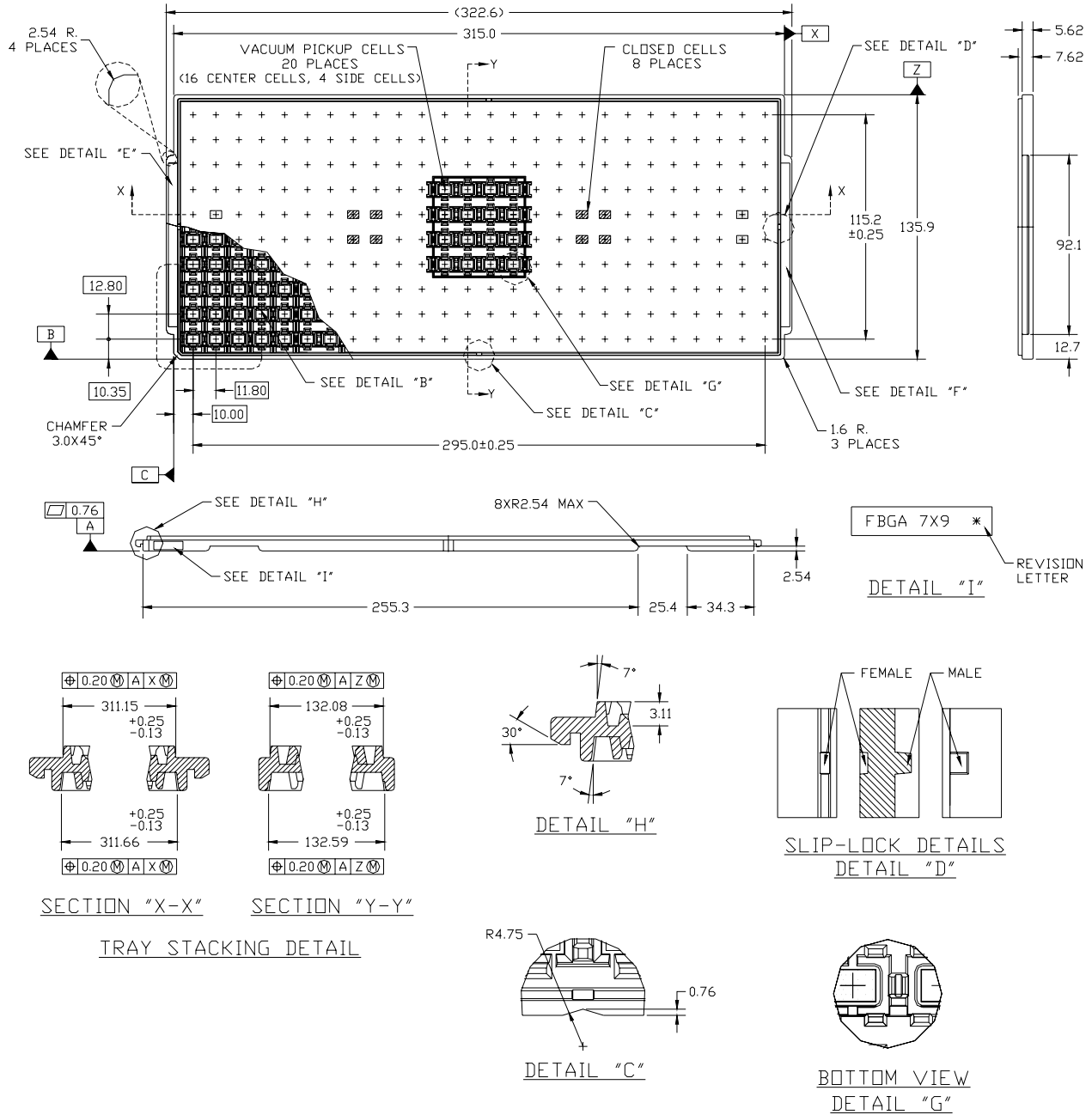


**Old tray**

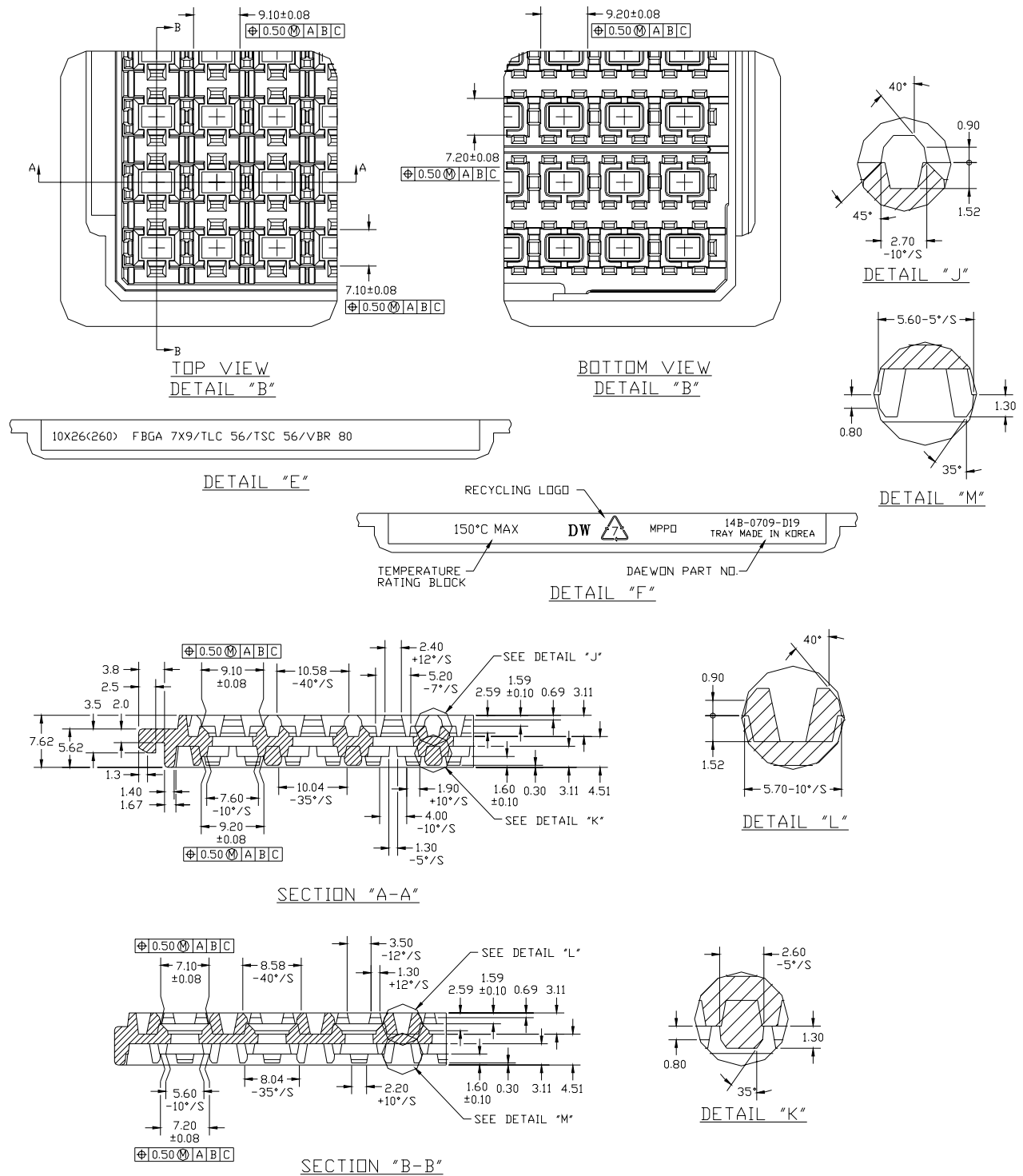


**New tray**

**Figure 2: Changes to pocket in new tray**



**Figure 3:** Tray drawing for TLC056, TSC056, VB0056, TLC080, TSC080, and VBR080 (1 of 2)



**Figure 3:** Tray drawing for TLC056, TSC056, VB0056, TLC080, TSC080, and VBR080 (2 of



**Reason for Change:** Improve manufacturing efficiency & operational flexibility as a continuous improvement activity.

**Application Impact:** There is no expected impact to product functionality, performance, reliability, or quality. Customers should refer to the details above to evaluate any potential impact to their internal operations. During the transition period, shipments may contain a mixture of old and new trays until the old tray has been depleted.

**Earliest Possible Samples Available Date:** May 8th, 2006

**Earliest Possible Production Shipment Date:** August 7th, 2006

**Samples Request:** Contact your local sales office for sample requests.

Even though the above date projections are based on the most current product development status information at the time this ACN was issued, they are subject to change. For the latest schedule and any other information, please contact your local sales office or your local distributor.