

Test Report

No. : CE/2019/C3058

Date : 2019/12/24

Page : 1 of 9

HITACHI CHEMICAL CO., LTD.

1772-1 KANAKUBO YUUKI-SHI IBARAKI, 307-0015, JAPAN

The following samples was/were submitted and identified by/on behalf of the applicant as :

Sample Submitted By : HITACHI CHEMICAL CO., LTD.
Sample Description : EPOXY MOLDING COMPOUND
Style/Item No. : CEL-9200HF SERIES (CEL-9200HF,CEL-9200ZHF,CEL-9200THF,CEL-9200HF9,
CEL-9120HF,CEL-9210HF,CEL-9210HF,CEL-9210HF10AL,CEL-9210ZHF10AL,
CEL-9220HF,CEL-9220ZHF,CEL-9220THF,CEL-9221HF,E2063,CEL-310,CEL-312,
CEL-314,CEL-9250HF)
Sample Receiving Date : 2019/12/17
Testing Period : 2019/12/17 to 2019/12/24

Test Requested :

- (1) As specified by client, with reference to RoHS 2011/65/EU Annex II and amending Directive (EU) 2015/863 to determine Cadmium, Lead, Mercury, Cr(VI), PBBs, PBDEs, DBP, BBP, DEHP, DIBP contents in the submitted sample(s).
- (2) Please refer to next pages for the other item(s).

Test Result(s) : Please refer to following pages.


Troy Chang / Manager - Tech
Signed for and behalf of
SGS TAIWAN LTD.
Chemical Laboratory - Taipei



This document is issued by the Company subject to its General Conditions of Service printed overleaf, available on request or accessible at <http://www.sgs.com/en/Terms-and-Conditions.aspx> and, for electronic format documents, subject to Terms and Conditions for Electronic Documents at <https://www.sgs.com/en/terms-and-conditions/terms-e-document>. Attention is drawn to the limitation of liability, indemnification and jurisdiction issues defined therein. Any holder of this document is advised that information contained hereon reflects the Company's findings at the time of its intervention only and within the limits of client's instruction, if any. The Company's sole responsibility is to its Client and this document does not exonerate parties to a transaction from exercising all their rights and obligations under the transaction documents. This document cannot be reproduced, except in full, without prior written approval of the Company. Any unauthorized alteration, forgery or falsification of the content or appearance of this document is unlawful and offenders may be prosecuted to the fullest extent of the law. Unless otherwise stated the results shown in this test report refer only to the sample(s) tested.

Test Report

No. : CE/2019/C3058

Date : 2019/12/24

Page : 2 of 9

HITACHI CHEMICAL CO., LTD.

1772-1 KANAKUBO YUUKI-SHI IBARAKI, 307-0015, JAPAN

Test Result(s)

PART NAME No.1 : DARK GRAY LUMP

Test Item(s)	Unit	Method	MDL	Result
				No.1
Cadmium (Cd)	mg/kg	With reference to IEC 62321-5 (2013) and performed by ICP-OES.	2	n.d.
Lead (Pb)	mg/kg	With reference to IEC 62321-5 (2013) and performed by ICP-OES.	2	n.d.
Mercury (Hg)	mg/kg	With reference to IEC 62321-4:2013+AMD1:2017 and performed by ICP-OES.	2	n.d.
Hexavalent Chromium Cr(VI)	mg/kg	With reference to IEC 62321-7-2 (2017) and performed by UV-VIS.	8	n.d.
Sum of PBBs	mg/kg	With reference to IEC 62321-6 (2015) and performed by GC/MS.	-	n.d.
Monobromobiphenyl	mg/kg		5	n.d.
Dibromobiphenyl	mg/kg		5	n.d.
Tribromobiphenyl	mg/kg		5	n.d.
Tetrabromobiphenyl	mg/kg		5	n.d.
Pentabromobiphenyl	mg/kg		5	n.d.
Hexabromobiphenyl	mg/kg		5	n.d.
Heptabromobiphenyl	mg/kg		5	n.d.
Octabromobiphenyl	mg/kg		5	n.d.
Nonabromobiphenyl	mg/kg		5	n.d.
Decabromobiphenyl	mg/kg		5	n.d.
Sum of PBDEs	mg/kg		-	n.d.
Monobromodiphenyl ether	mg/kg		5	n.d.
Dibromodiphenyl ether	mg/kg		5	n.d.
Tribromodiphenyl ether	mg/kg		5	n.d.
Tetrabromodiphenyl ether	mg/kg		5	n.d.
Pentabromodiphenyl ether	mg/kg		5	n.d.
Hexabromodiphenyl ether	mg/kg		5	n.d.
Heptabromodiphenyl ether	mg/kg		5	n.d.
Octabromodiphenyl ether	mg/kg		5	n.d.
Nonabromodiphenyl ether	mg/kg	5	n.d.	
Decabromodiphenyl ether	mg/kg	5	n.d.	

This document is issued by the Company subject to its General Conditions of Service printed overleaf, available on request or accessible at <http://www.sgs.com/en/Terms-and-Conditions.aspx> and, for electronic format documents, subject to Terms and Conditions for Electronic Documents at <https://www.sgs.com/en/terms-and-conditions/terms-e-document>. Attention is drawn to the limitation of liability, indemnification and jurisdiction issues defined therein. Any holder of this document is advised that information contained herein reflects the Company's findings at the time of its intervention only and within the limits of client's instruction, if any. The Company's sole responsibility is to its Client and this document does not exonerate parties to a transaction from exercising all their rights and obligations under the transaction documents. This document cannot be reproduced, except in full, without prior written approval of the Company. Any unauthorized alteration, forgery or falsification of the content or appearance of this document is unlawful and offenders may be prosecuted to the fullest extent of the law. Unless otherwise stated the results shown in this test report refer only to the sample(s) tested.

Test Report

No. : CE/2019/C3058

Date : 2019/12/24

Page : 3 of 9

HITACHI CHEMICAL CO., LTD.

1772-1 KANAKUBO YUUKI-SHI IBARAKI, 307-0015, JAPAN

Test Item(s)	Unit	Method	MDL	Result
				No.1
DEHP (Di- (2-ethylhexyl) phthalate) (CAS No.: 117-81-7)	mg/kg	With reference to IEC 62321-8 (2017). Analysis was performed by GC/MS.	50	n.d.
BBP (Butyl Benzyl phthalate) (CAS No.: 85-68-7)	mg/kg		50	n.d.
DBP (Dibutyl phthalate) (CAS No.: 84-74-2)	mg/kg		50	n.d.
DIBP (Di-isobutyl phthalate) (CAS No.: 84-69-5)	mg/kg		50	n.d.
Halogen				
Halogen-Fluorine (F) (CAS No.: 14762-94-8)	mg/kg	With reference to BS EN 14582 (2016). Analysis was performed by IC.	50	n.d.
Halogen-Chlorine (Cl) (CAS No.: 22537-15-1)	mg/kg		50	n.d.
Halogen-Bromine (Br) (CAS No.: 10097-32-2)	mg/kg		50	n.d.
Halogen-Iodine (I) (CAS No.: 14362-44-8)	mg/kg		50	n.d.
Antimony (Sb)	mg/kg	With reference to US EPA 3052 (1996). Analysis was performed by ICP-OES.	2	n.d.

Note :

1. mg/kg = ppm ; 0.1wt% = 1000ppm
2. MDL = Method Detection Limit
3. n.d. = Not Detected = less than MDL
4. " - " = Not Regulated

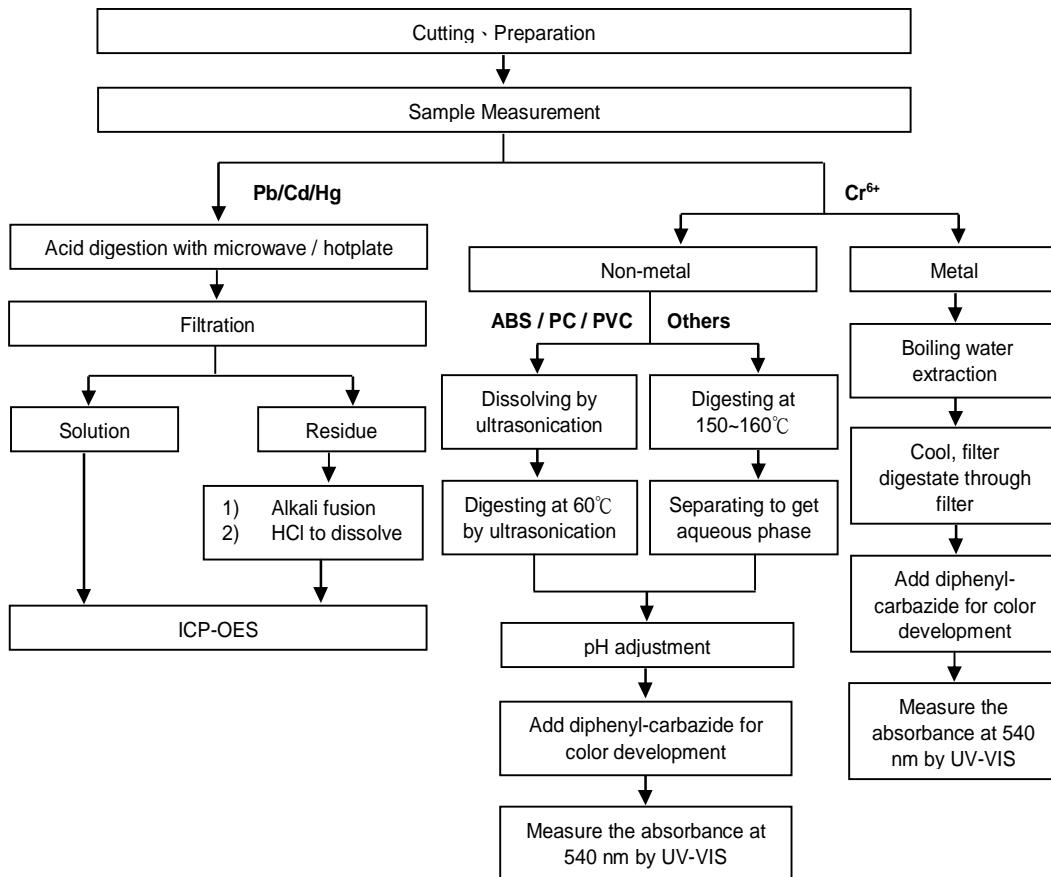
HITACHI CHEMICAL CO., LTD.

1772-1 KANAKUBO YUUKI-SHI IBARAKI, 307-0015, JAPAN

Analytical flow chart of Heavy Metal

These samples were dissolved totally by pre-conditioning method according to below flow chart. (Cr⁶⁺ test method excluded)

- Technician : Rita Chen
- Supervisor: Troy Chang



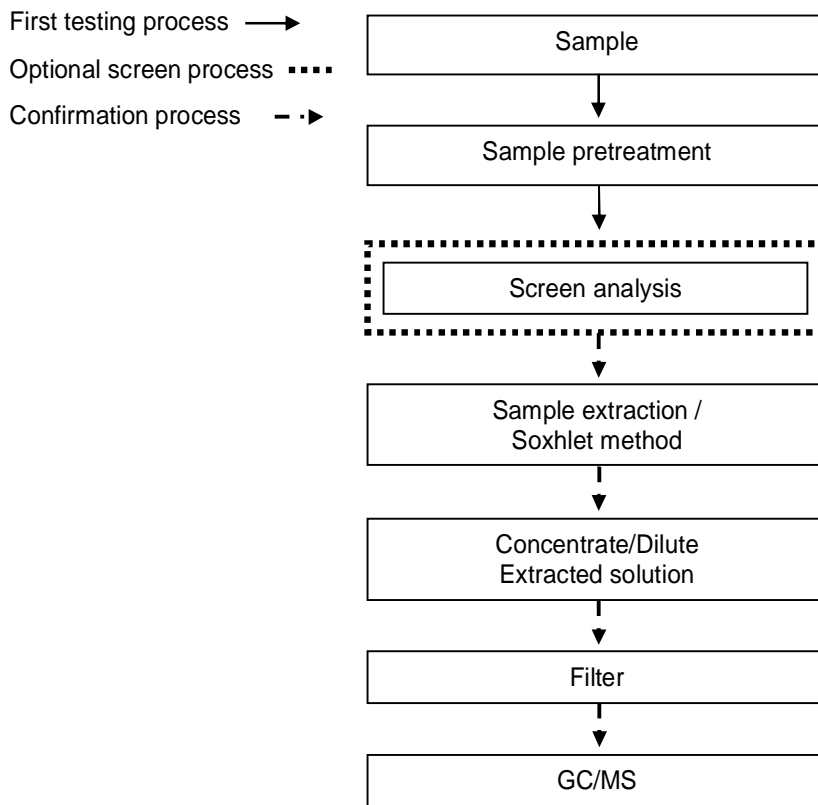
This document is issued by the Company subject to its General Conditions of Service printed overleaf, available on request or accessible at <http://www.sgs.com/en/Terms-and-Conditions.aspx> and, for electronic format documents, subject to Terms and Conditions for Electronic Documents at <https://www.sgs.com/en/terms-and-conditions/terms-e-document>. Attention is drawn to the limitation of liability, indemnification and jurisdiction issues defined therein. Any holder of this document is advised that information contained herein reflects the Company's findings at the time of its intervention only and within the limits of client's instruction, if any. The Company's sole responsibility is to its Client and this document does not exonerate parties to a transaction from exercising all their rights and obligations under the transaction documents. This document cannot be reproduced, except in full, without prior written approval of the Company. Any unauthorized alteration, forgery or falsification of the content or appearance of this document is unlawful and offenders may be prosecuted to the fullest extent of the law. Unless otherwise stated the results shown in this test report refer only to the sample(s) tested.

HITACHI CHEMICAL CO., LTD.

1772-1 KANAKUBO YUUKI-SHI IBARAKI, 307-0015, JAPAN

Analytical flow chart – PBB / PBDE

- Technician : Yaling Tu
- Supervisor: Troy Chang



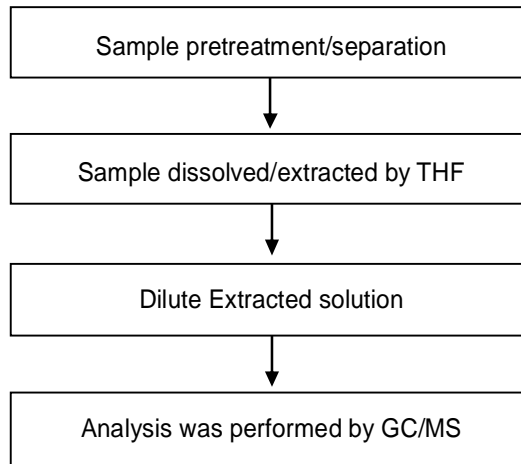
This document is issued by the Company subject to its General Conditions of Service printed overleaf, available on request or accessible at <http://www.sgs.com/en/Terms-and-Conditions.aspx> and, for electronic format documents, subject to Terms and Conditions for Electronic Documents at <https://www.sgs.com/en/terms-and-conditions/terms-e-document>. Attention is drawn to the limitation of liability, indemnification and jurisdiction issues defined therein. Any holder of this document is advised that information contained hereon reflects the Company's findings at the time of its intervention only and within the limits of client's instruction, if any. The Company's sole responsibility is to its Client and this document does not exonerate parties to a transaction from exercising all their rights and obligations under the transaction documents. This document cannot be reproduced, except in full, without prior written approval of the Company. Any unauthorized alteration, forgery or falsification of the content or appearance of this document is unlawful and offenders may be prosecuted to the fullest extent of the law. Unless otherwise stated the results shown in this test report refer only to the sample(s) tested.

HITACHI CHEMICAL CO., LTD.

1772-1 KANAKUBO YUUKI-SHI IBARAKI, 307-0015, JAPAN

Analytical flow chart - Phthalate

- Technician: Yaling Tu
- Supervisor: Troy Chang

【Test method: IEC 62321-8】

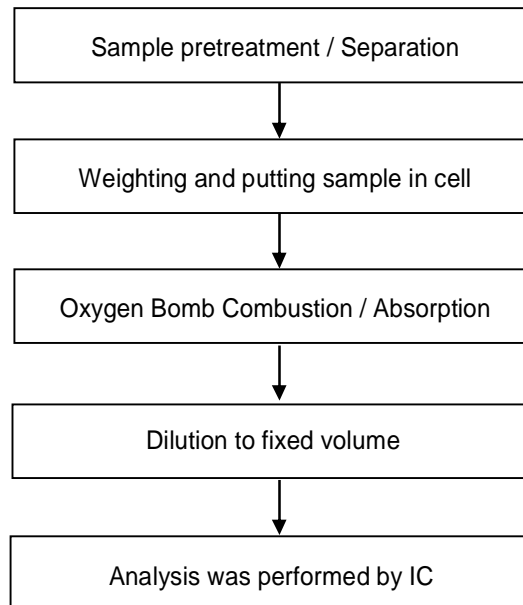
This document is issued by the Company subject to its General Conditions of Service printed overleaf, available on request or accessible at <http://www.sgs.com/en/Terms-and-Conditions.aspx> and, for electronic format documents, subject to Terms and Conditions for Electronic Documents at <https://www.sgs.com/en/terms-and-conditions/terms-e-document>. Attention is drawn to the limitation of liability, indemnification and jurisdiction issues defined therein. Any holder of this document is advised that information contained hereon reflects the Company's findings at the time of its intervention only and within the limits of client's instruction, if any. The Company's sole responsibility is to its Client and this document does not exonerate parties to a transaction from exercising all their rights and obligations under the transaction documents. This document cannot be reproduced, except in full, without prior written approval of the Company. Any unauthorized alteration, forgery or falsification of the content or appearance of this document is unlawful and offenders may be prosecuted to the fullest extent of the law. Unless otherwise stated the results shown in this test report refer only to the sample(s) tested.

HITACHI CHEMICAL CO., LTD.

1772-1 KANAKUBO YUUKI-SHI IBARAKI, 307-0015, JAPAN

Analytical flow chart - Halogen

- Technician: Rita Chen
- Supervisor: Troy Chang



This document is issued by the Company subject to its General Conditions of Service printed overleaf, available on request or accessible at <http://www.sgs.com/en/Terms-and-Conditions.aspx> and, for electronic format documents, subject to Terms and Conditions for Electronic Documents at <https://www.sgs.com/en/terms-and-conditions/terms-e-document>. Attention is drawn to the limitation of liability, indemnification and jurisdiction issues defined therein. Any holder of this document is advised that information contained herein reflects the Company's findings at the time of its intervention only and within the limits of client's instruction, if any. The Company's sole responsibility is to its Client and this document does not exonerate parties to a transaction from exercising all their rights and obligations under the transaction documents. This document cannot be reproduced, except in full, without prior written approval of the Company. Any unauthorized alteration, forgery or falsification of the content or appearance of this document is unlawful and offenders may be prosecuted to the fullest extent of the law. Unless otherwise stated the results shown in this test report refer only to the sample(s) tested.

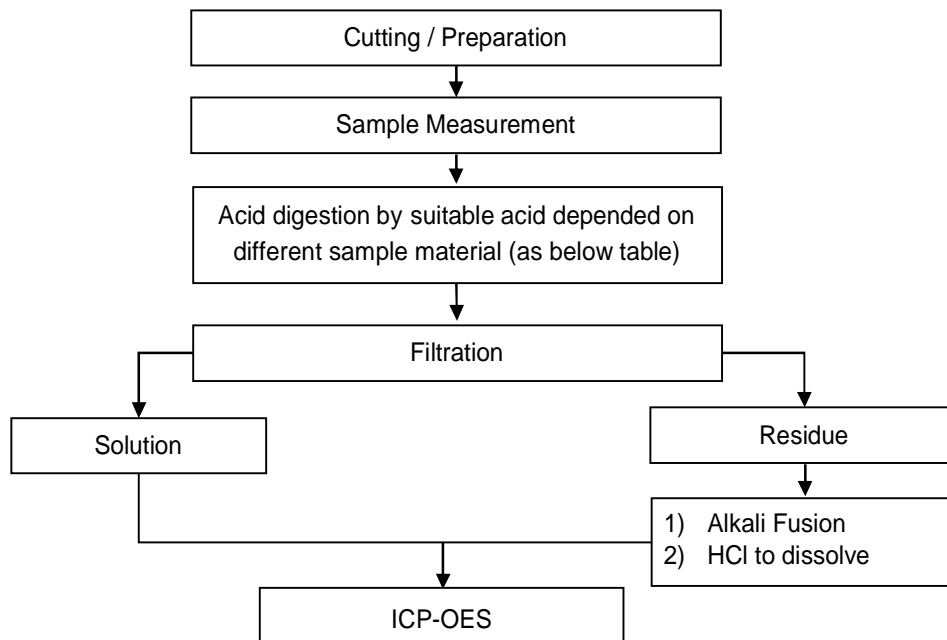
HITACHI CHEMICAL CO., LTD.

1772-1 KANAKUBO YUUKI-SHI IBARAKI, 307-0015, JAPAN

These samples were dissolved totally by pre-conditioning method according to below flow chart.

- Technician: Rita Chen
- Supervisor: Troy Chang

Flow Chart of digestion for the elements analysis performed by ICP-OES



Steel, copper, aluminum, solder	Aqua regia, HNO ₃ , HCl, HF, H ₂ O ₂
Glass	HNO ₃ /HF
Gold, platinum, palladium, ceramic	Aqua regia
Silver	HNO ₃
Plastic	H ₂ SO ₄ , H ₂ O ₂ , HNO ₃ , HCl
Others	Added appropriate reagent to total digestion

Test Report

No. : CE/2019/C3058

Date : 2019/12/24

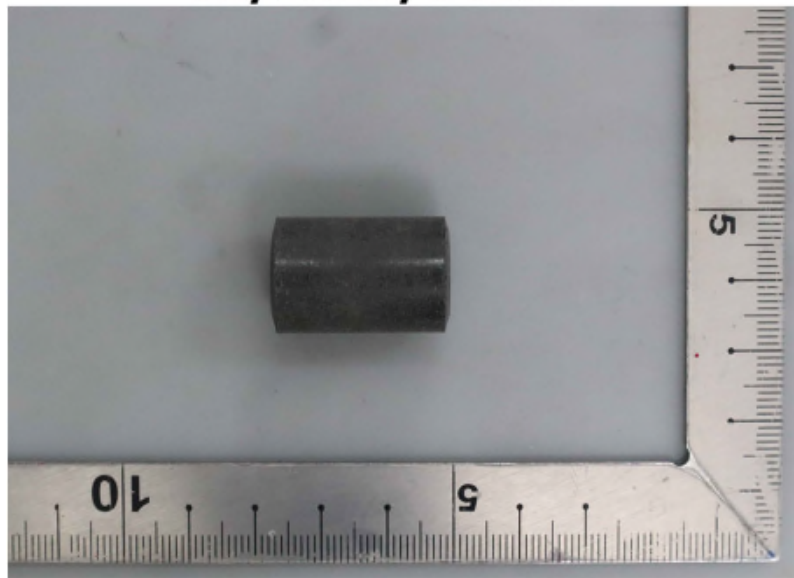
Page : 9 of 9

HITACHI CHEMICAL CO., LTD.

1772-1 KANAKUBO YUUKI-SHI IBARAKI, 307-0015, JAPAN

* The tested sample / part is marked by an arrow if it's shown on the photo. *

CE/2019/C3058



** End of Report **