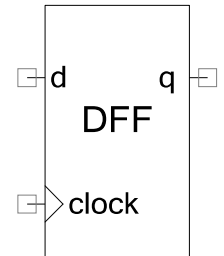


D Flip Flop

1.20

Features

- Asynchronous reset or preset
- Synchronous reset or preset
- Optional array of D Flip Flops
- Can be configured for different width



General Description

The D Flip Flop stores a digital value.

When to Use a D Flip Flop

Use the D Flip Flop to implement sequential logic.

Input/Output Connections

This section describes the various input and output connections for the D Flip Flop. An asterisk (*) in the list of I/Os states that the I/O may be hidden on the symbol under the conditions listed in the description of that I/O.

d – Input

This input determines the next value of the output. The output does not change until the next rising edge of the clock.

clock – Input

The clock signal determines when the output will change. The output changes when a rising edge of the clock is detected.

ar – Input *

Asynchronous reset. When this input is true, the output immediately changes to false without waiting for the positive edge of the clock. Asynchronous reset functions regardless of the status

of the clock signal. This input only appears if the **PresetOrReset** parameter is set to **Asynchronous Reset**.

ap – Input *

Asynchronous preset. When this input is true, the output immediately changes to true without waiting for the positive edge of the clock. Asynchronous preset functions regardless of the status of the clock signal. This input only appears if the **PresetOrReset** parameter is set to **Asynchronous Preset**.

sr – Input *

Synchronous reset. When this input is true, the output changes to false on the positive edge of the clock. This input only appears if the **PresetOrReset** parameter is set to **Synchronous Reset**.

sp – Input *

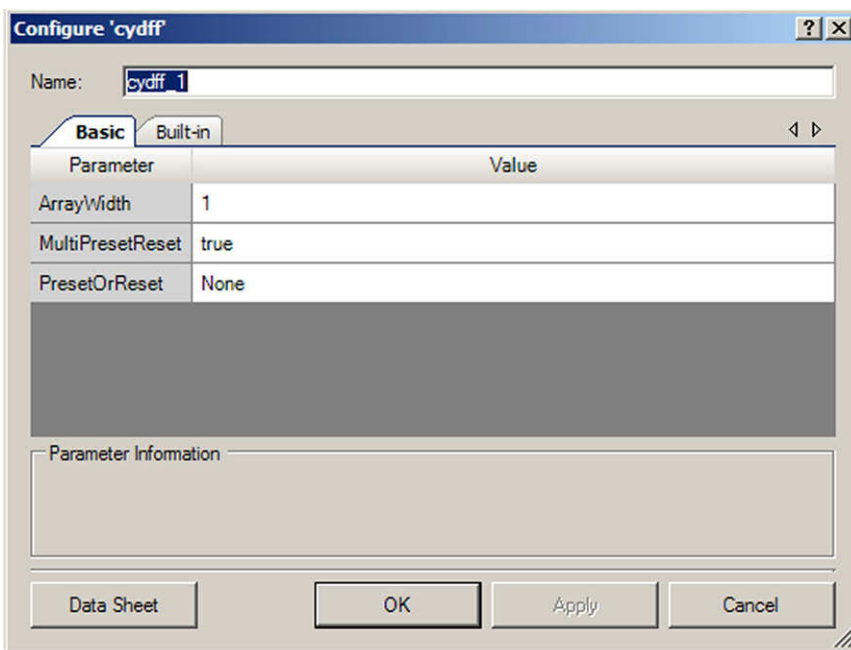
Synchronous preset. When this input is true, the output changes to true on the positive edge of the clock. This input only appears if the **PresetOrReset** parameter is set to **Synchronous Preset**.

q – Output

The stored value of the D Flip Flop.

Component Parameters

Drag a D Flip Flop onto your design and double-click it to open the **Configure** dialog.



The D Flip Flop provides the following parameters.

ArrayWidth

You can create an array of the D Flip Flop, which may be useful if the input or output is a bus. This parameter defines the bus width of the d and q terminals. The value must be between 1 and 32. The default is 1.

MultiPresetReset

This parameter controls whether the preset and reset inputs are implemented as a bus, the size of **ArrayWidth** (if **true**) or are implemented as a single bit (if **false**).

PresetOrReset

This parameter controls whether the asynchronous preset (ap) input, asynchronous reset (ar), synchronous preset (sp) input, or synchronous reset (sr) is visible. The default is **None**.

Functional Description

The D Flip Flop is implementing in PLD macrocells. All macrocell flip-flops are initialized to a 0 value at power up and after any reset of the device.

Asynchronous preset and reset is implemented directly in the macrocell. The synchronous preset is implemented using the following logical equation implemented in macrocell product terms:

$$Q = D \mid SP$$

Synchronous reset is implemented using the following logical equation implemented in macrocell product terms:

$$Q = D \& \sim SR$$

Table 1. 1-ArrayWidth D Flip Flop Truth Table

Preset	Reset	D	Q
0	-	0	0
0	-	1	1
1	-	X	1
-	0	0	0
-	0	1	1
-	1	X	0

A letter 'X' in the truth table indicates that the input does not affect the output.



Resources

The D Flip Flop uses one macrocell. If the ArrayWidth parameter is greater than 1, the D Flip Flop uses a number of macrocells equal to ArrayWidth. All D Flip Flop components in the same PLD must have the same clock signal for clocking.

DC and AC Electrical Characteristics

The DFF component supports the maximum device frequency.

Component Changes

This section lists the major changes in the component from the previous version.

Version	Description of Changes
1.20.b	Minor datasheet edits and updates
1.20.a	Minor datasheet edits and updates
1.20	Added synchronous reset and preset option
	Added MultiPresetReset parameter
	Minor datasheet edits and updates
1.10	Replaced NeedAP and NeedAR parameters with PresetorReset parameter.

© Cypress Semiconductor Corporation, 2010-2012. The information contained herein is subject to change without notice. Cypress Semiconductor Corporation assumes no responsibility for the use of any circuitry other than circuitry embodied in a Cypress product. Nor does it convey or imply any license under patent or other rights. Cypress products are not warranted nor intended to be used for medical, life support, life saving, critical control or safety applications, unless pursuant to an express written agreement with Cypress. Furthermore, Cypress does not authorize its products for use as critical components in life-support systems where a malfunction or failure may reasonably be expected to result in significant injury to the user. The inclusion of Cypress products in life-support systems application implies that the manufacturer assumes all risk of such use and in doing so indemnifies Cypress against all charges.

PSoC® Creator™, Programmable System-on-Chip™, and PSoC Express™ are trademarks and PSoC® is a registered trademark of Cypress Semiconductor Corp. All other trademarks or registered trademarks referenced herein are property of the respective corporations.

Any Source Code (software and/or firmware) is owned by Cypress Semiconductor Corporation (Cypress) and is protected by and subject to worldwide patent protection (United States and foreign), United States copyright laws and international treaty provisions. Cypress hereby grants to licensee a personal, non-exclusive, non-transferable license to copy, use, modify, create derivative works of, and compile the Cypress Source Code and derivative works for the sole purpose of creating custom software and or firmware in support of licensee product to be used only in conjunction with a Cypress integrated circuit as specified in the applicable agreement. Any reproduction, modification, translation, compilation, or representation of this Source Code except as specified above is prohibited without the express written permission of Cypress.

Disclaimer: CYPRESS MAKES NO WARRANTY OF ANY KIND, EXPRESS OR IMPLIED, WITH REGARD TO THIS MATERIAL, INCLUDING, BUT NOT LIMITED TO, THE IMPLIED WARRANTIES OF MERCHANTABILITY AND FITNESS FOR A PARTICULAR PURPOSE. Cypress reserves the right to make changes without further notice to the materials described herein. Cypress does not assume any liability arising out of the application or use of any product or circuit described herein. Cypress does not authorize its products for use as critical components in life-support systems where a malfunction or failure may reasonably be expected to result in significant injury to the user. The inclusion of Cypress' product in a life-support systems application implies that the manufacturer assumes all risk of such use and in doing so indemnifies Cypress against all charges.

Use may be limited by and subject to the applicable Cypress software license agreement.

