



Please note that Cypress is an Infineon Technologies Company.

The document following this cover page is marked as “Cypress” document as this is the company that originally developed the product. Please note that Infineon will continue to offer the product to new and existing customers as part of the Infineon product portfolio.

Continuity of document content

The fact that Infineon offers the following product as part of the Infineon product portfolio does not lead to any changes to this document. Future revisions will occur when appropriate, and any changes will be set out on the document history page.

Continuity of ordering part numbers

Infineon continues to support existing part numbers. Please continue to use the ordering part numbers listed in the datasheet for ordering.



AN INFINEON TECHNOLOGIES COMPANY

THIS SPEC IS OBSOLETE

Spec No: 001-80388

Spec Title: CY3215A-DK PSoC IN-CIRCUIT EMULATION (ICE) LI
TE DEVELOPMENT KIT QUICK START GUIDE

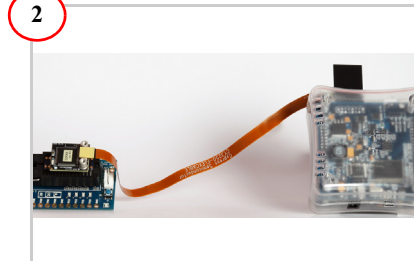
Replaced by: NONE



Install Software

1. Insert the CY3215A-DK CD/DVD into the CD/DVD drive of your PC.
2. Install the kit contents, PSoC Programmer, and PSoC Designer.

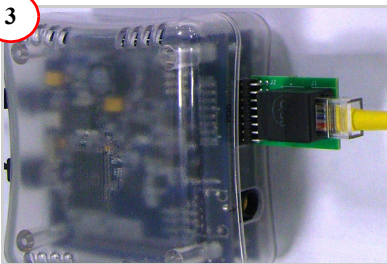
Note: After installation, follow instructions in step 2 to debug using pod kit OR follow the instructions in steps 3 and 4 to program PSoC 1 based target board.



Use Pod to Debug

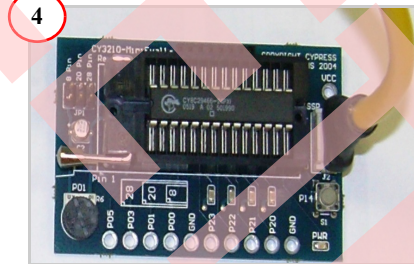
1. Attach the flex cable and pod to the ICE-Cube (ICE base unit).
2. Create a project in PSoC Designer and start debugging.

Note: Pod Kit needs to be purchased separately. Visit www.cypress.com/go/shop to find the latest list of Pods.



To Program Target Boards

1. Attach the backward compatibility adapter to the ICE-Cube in the place of the flex-pod.
2. Connect the RJ45 end of the ISSP cable into the adapter.



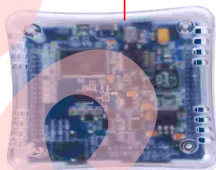
3. Connect the 5-pin connector of the ISSP cable to your PSoC 1 based target board's ISSP header.
4. Program the parts using PSoC Programmer.

CY3215A-DK Kit Details

12-V 1-A
Adapter



ICE Base Unit



USB 2.0 Cable



European
Plug Adapter



Backward
Compatibility
Adapter



CY3250
Flex Cable



ISSP Cable



Blue Cat 5e Cable

For assistance, go to <http://www.cypress.com/go/support>, or contact our customer support at +1 (800) 541-4736 Ext. 2 (in the USA) or +1 (408) 943-2600 Ext. 2 (International).

For the latest information about this kit, visit
www.cypress.com/go/CY3215A-DK