

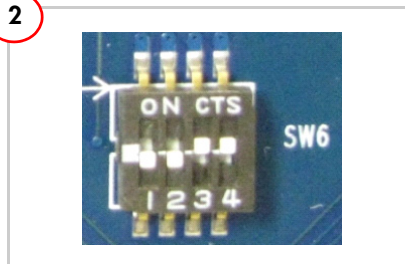
1



Install Software

1. Insert the kit CD/DVD into the CD/DVD drive of your PC.
2. Install the kit contents.

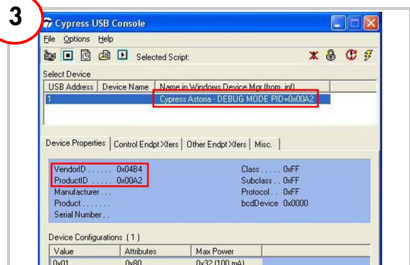
2



Configure DVK Board in Debug Mode

1. Set SW6 as shown; place a jumper on J29.
2. Select VBUS using J78; select 3.3 V using J13.
3. Ensure SW2, SW3, and SW7 are in the OFF position.

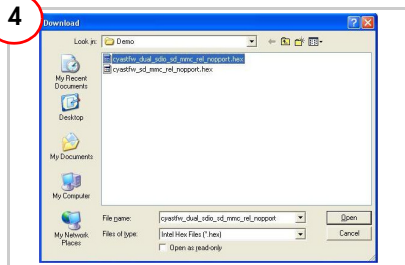
3



Install Driver and Run CyConsole Utility

1. Connect the DVK board to your PC using the USB cable. Set J18 in the ON position.
2. Select the appropriate driver from <Install_Directory>\Cypress\West Bridge Astoria\<version>\USB Drivers depending on the operating system and architecture (32/64-bit). The device enumerates as "Cypress Astoria - DEBUG MODE PID=0x00A2".
3. Insert the SD card in one or both sockets.
4. Run the CyConsole utility from the <CD/DVD>\Demo folder.

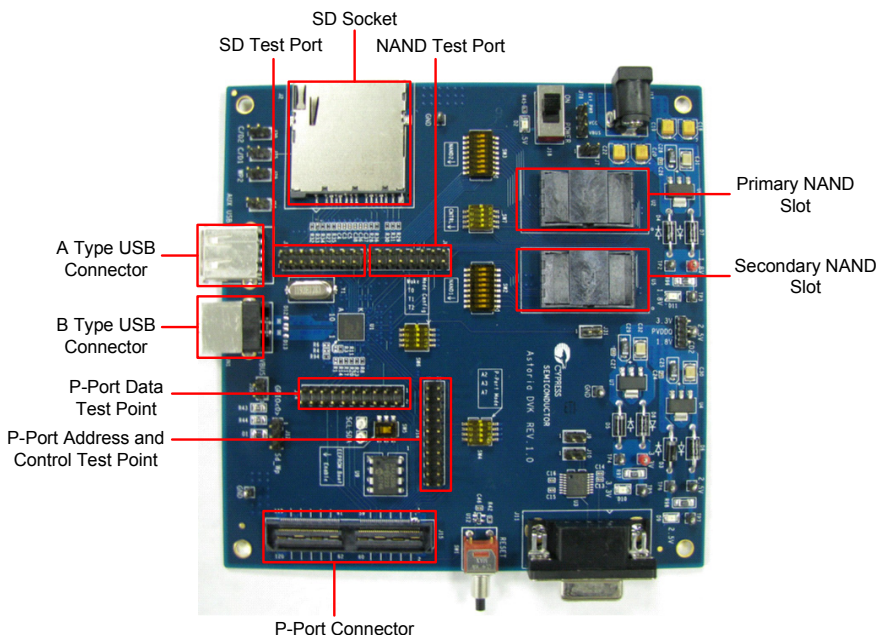
4



Run Demo Procedure for Dual SD

1. Click **Options > EZ USB Interface** in the Cypress Cyconsole utility.
2. In the new window, click **Download**.
3. Select the firmware image from the <CD/DVD>\Demo folder or the installed path. Click **Open**.
4. After the firmware image downloads to Astoria, two removable drives appear. Try downloading data to and from the devices.

Board Details



Note: West Bridge Astoria firmware no longer supports NAND flash memories. The NAND slots are unused.

For the latest information about this kit, visit
<http://www.cypress.com/go/CYWBDVK002AB>

