

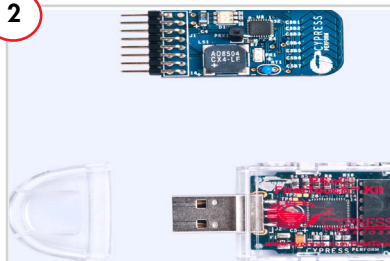
CY3270 PSoC® 1 FIRSTTOUCH™ KIT QUICK START GUIDE

1



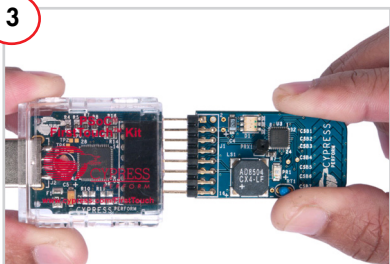
Insert Kit CD in the CD drive of your PC.
View the user guide.
Install kit content, PSoC Designer™, and
PSoC Programmer.

2



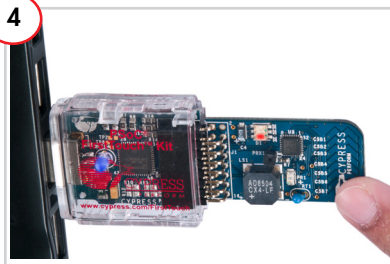
Remove the CY3270 PSoC® 1
FirstTouch™ Kit from the package and
remove the cover from the boards.

3



Connect the MultiFunction card to the
PC Bridge.

4

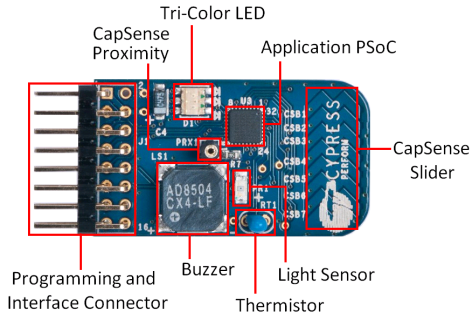


Connect the PC Bridge to your PC and slide
down the CapSense slider to check the
output. The tricolor LED lights up in
different colors with respect to finger
position.

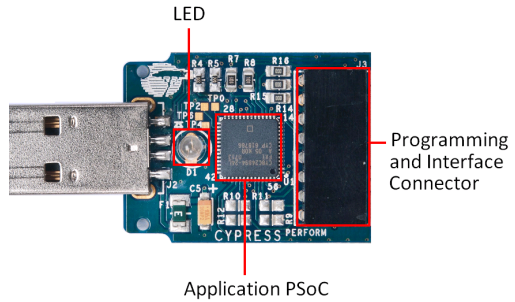
Note Install the required drivers (by installing
PSoC Programmer) before connecting the PC
Bridge to your PC.

CY3270 PSoC® 1 FIRSTTOUCH™ KIT QUICK START GUIDE

MultiFunction Card



PC Bridge



For the latest information about this kit visit
www.cypress.com/go/CY3270-FTK

