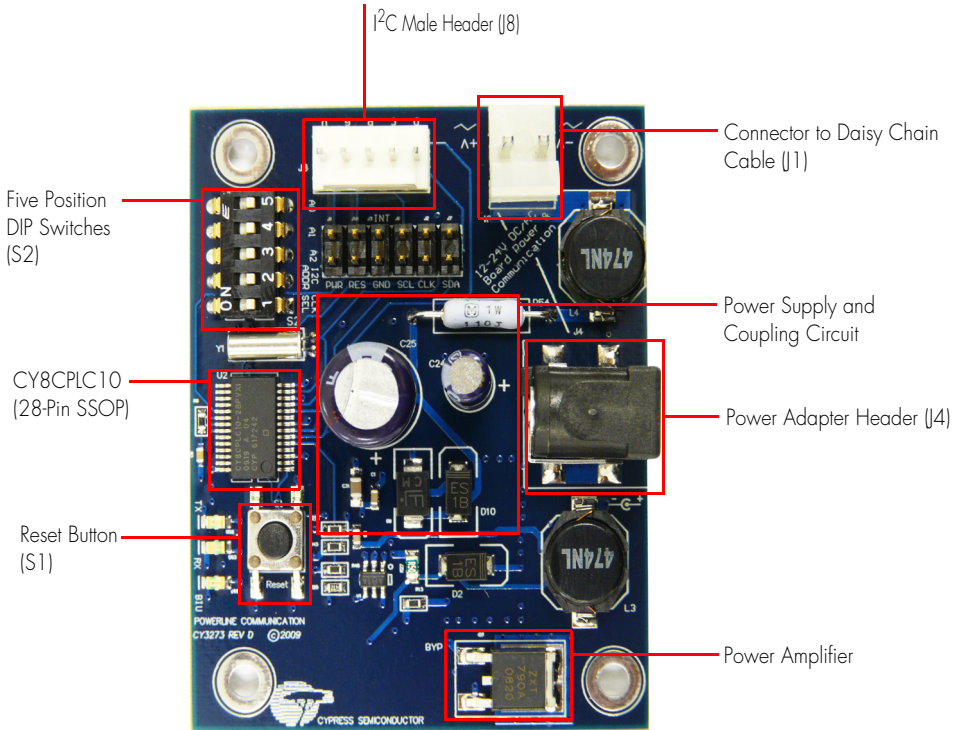


CY3273-LV PLC EVALUATION KIT QUICK START GUIDE

Using the CY3273 Low Voltage 12-24V AC/DC PLC Evaluation Kit with the PLC Control Panel Software Application

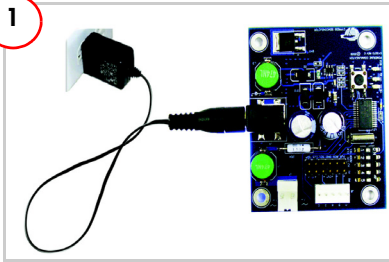
To evaluate this kit, a second PLC low voltage kit is required (CY3273 or CY3275). This guide assumes that two CY3273 kits are available. If a CY3275 kit is used as the second kit, refer to the Appendix of the PLC Control Panel GUI User's Guide for making the kit act as a CY3273. More information on the GUI is described in step 4 on page 2.

CY3273-LV Top View



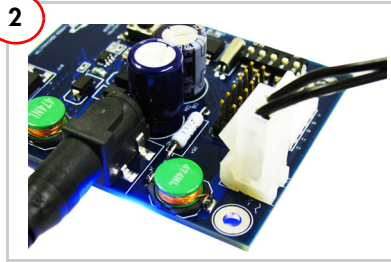
CY3273-LV PLC EVALUATION KIT QUICK START GUIDE

1



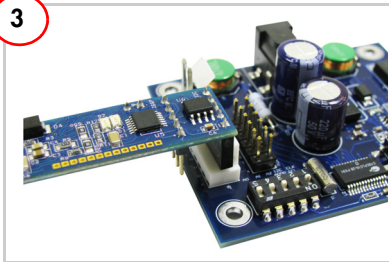
Connect the power adapter from the mains to header J4 on the first CY3273 board (node 1). The blue LED turns on.

2



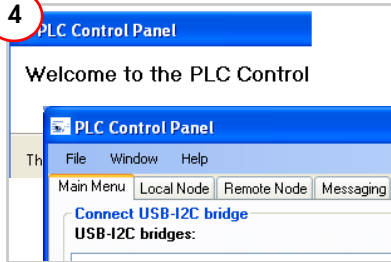
Attach one end of the custom daisy chain cable to header J1 on node 1 (connector hook facing in). Connect the other end to header J4 on the second CY3273 board (node 2). The blue LED turns on.

3



Attach one end of the USB-I2C Bridge to header J8 on node 1. With the mini USB cable, connect the Bridge to the PC. The green LED must turn on. **Note** If the USB-I2C bridge was shipped before September 2011, connect only one bridge for each PC. For more details, refer to Section 1.3 in the PLC Control Panel User's Guide.

4



Install and run the PLC Control Panel GUI from the CY3273 kit CD. Download the latest revision from the software and drivers link at www.cypress.com/go/plc.

Follow the instructions in Section 1.3 of the PLC Control Panel User's Guide to communicate between nodes 1 and 2. To open the user's guide from the GUI, click **Help > Users Guide** from the menu bar.

For the latest information about this kit visit
www.cypress.com/go/plc

