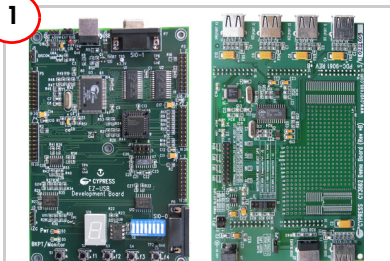


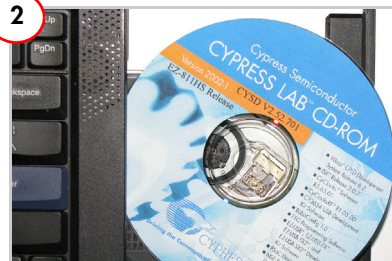
CY3662 EZ-811HS DEVELOPMENT KIT QUICK START GUIDE

1



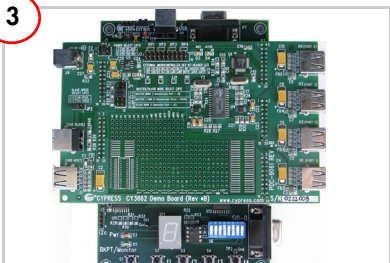
Remove the EZ-USB development board and the SL811HS daughter card from the package.

2



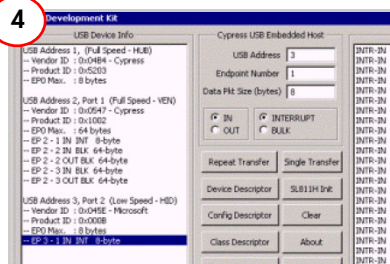
Insert the EZ-811HS Kit CD into the CD drive of your PC. Install the kit contents.

3



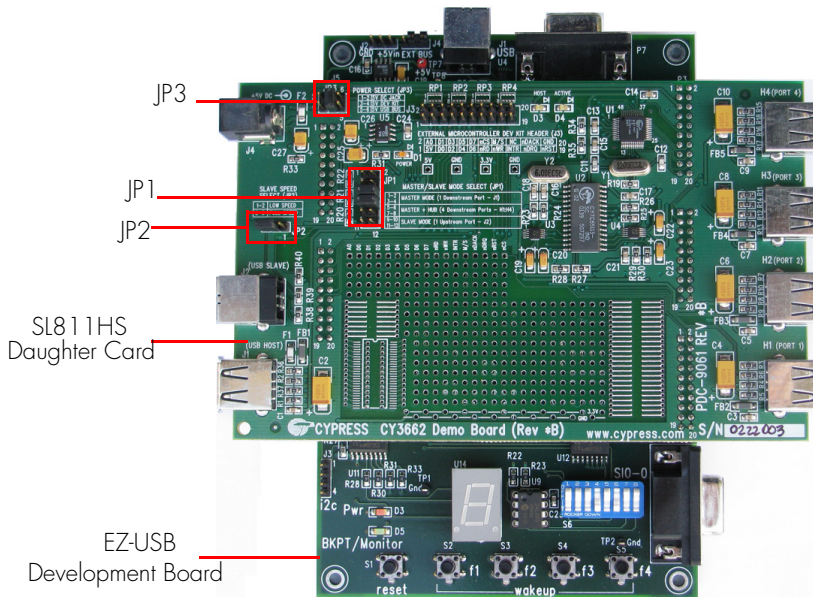
Set up the EZ-USB development board and the SL811HS daughter card.

4



Explore the firmware examples for USB Host and Slave modes from
<Install_Directory>\Cypress\USB\
ez811\firmware.

EZ-81 IHS Development Board Details



For the latest information about this kit, visit
<http://www.cypress.com>

