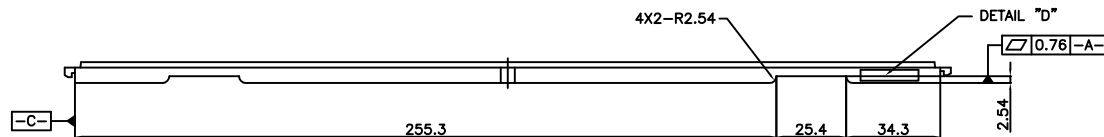
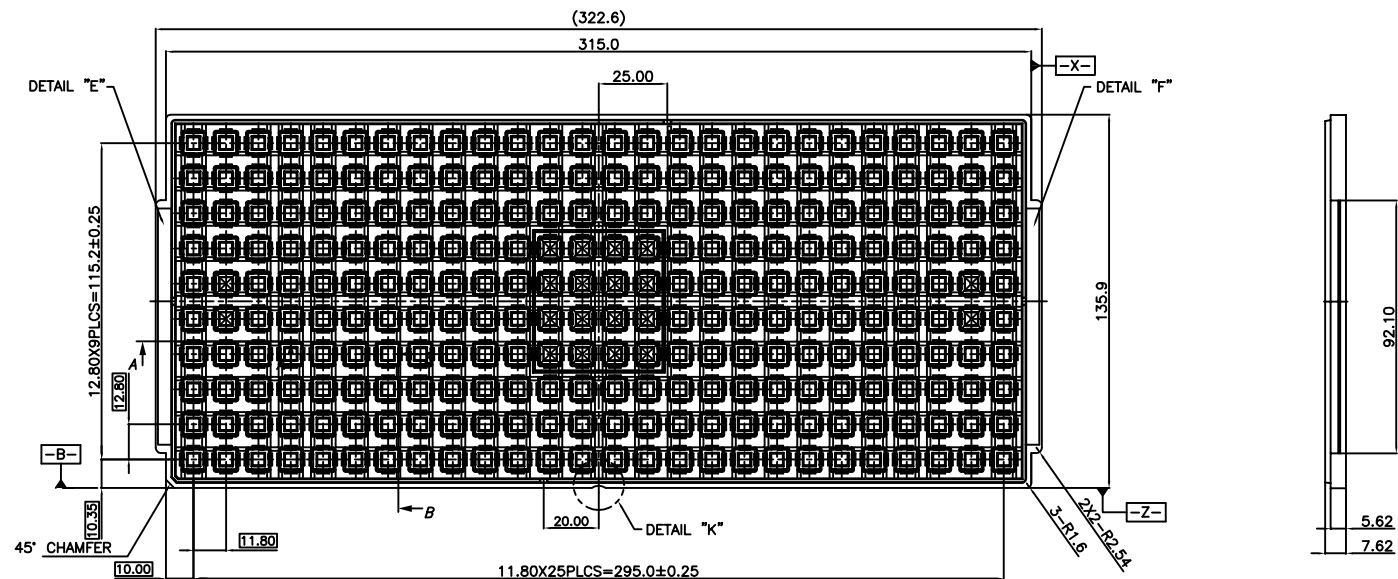


REVISIONS					
Zone	REV	ECN	DESCRIPTION	DATE	APPROVED
	**	2919856	NEW RELEASE	04/21/10	

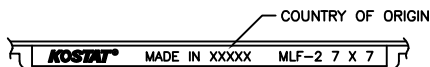


MLF-2 7 X 7
KS-870325 REV.00

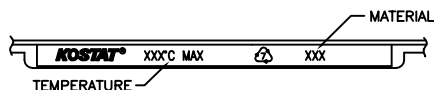
DETAIL "D"
(SCALE:2/1)



DATE DETAIL
(SCALE:2/1)

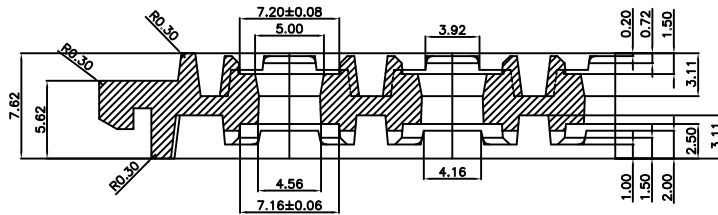


DETAIL "E"
(SCALE:2/1)

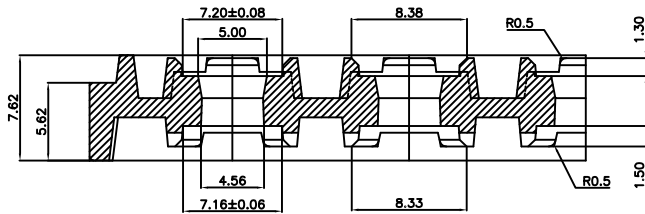


DETAIL "F"
(SCALE:2/1)

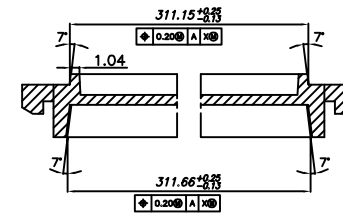
UNLESS OTHERWISE SPECIFIED ALL DIMENSIONS ARE IN MILLIMETERS STANDARD TOLERANCES ON: DECIMALS .X = ± 0.25 .XX = ± 0.13 .XXX = ± 0.13 ANGLES ± 1° MATERIAL FINISH	DESIGNED BY	DATE	 Company Confidential TITLE TRAY, QFN 7X7X0.6MM (KOSTAT)
	DRAWN BY CNN	04/21/10	
	CHK BY CSME	04/21/10	
	APPROVED BY	DATE	
	APPROVED BY	DATE	SIZE A SCALE NTS
			PART NO. TLB7X7-* DWG NO. 001-61109 REV ** SHEET 1 OF 2



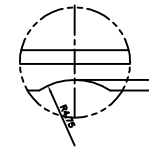
SECTION "A-A"
(SCALE:5/1)



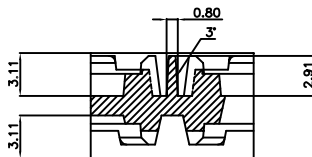
SECTION "B-B"
(SCALE:5/1)



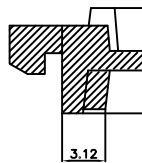
TRAY STACKING DETAIL
(SCALE:4/1)



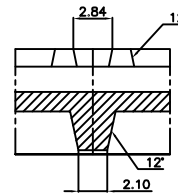
DETAIL "K"
(SCALE:4/1)



VACUUM CELL
(SCALE:5/1)



SLIP LOCK
(SCALE:5/1)



UNLESS OTHERWISE SPECIFIED ALL DIMENSIONS ARE IN MILLIMETERS STANDARD TOLERANCES ON: DECIMALS ANGLES .X = ± 0.25 ± 1° .XX = ± 0.13 .XXX =	DESIGNED BY	DATE	CYPRESS Company Confidential
	DRAWN BY	DATE	
	CHK BY	DATE	
	APPROVED BY	DATE	
MATERIAL	APPROVED BY	DATE	TITLE TRAY, QFN 7X7X0.6MM (KOSTAT)
FINISH			SIZE PART NO. DWG NO REV A TLB7X7-* 001-61109 **
SCALE NTS		SHEET 2 OF 2	