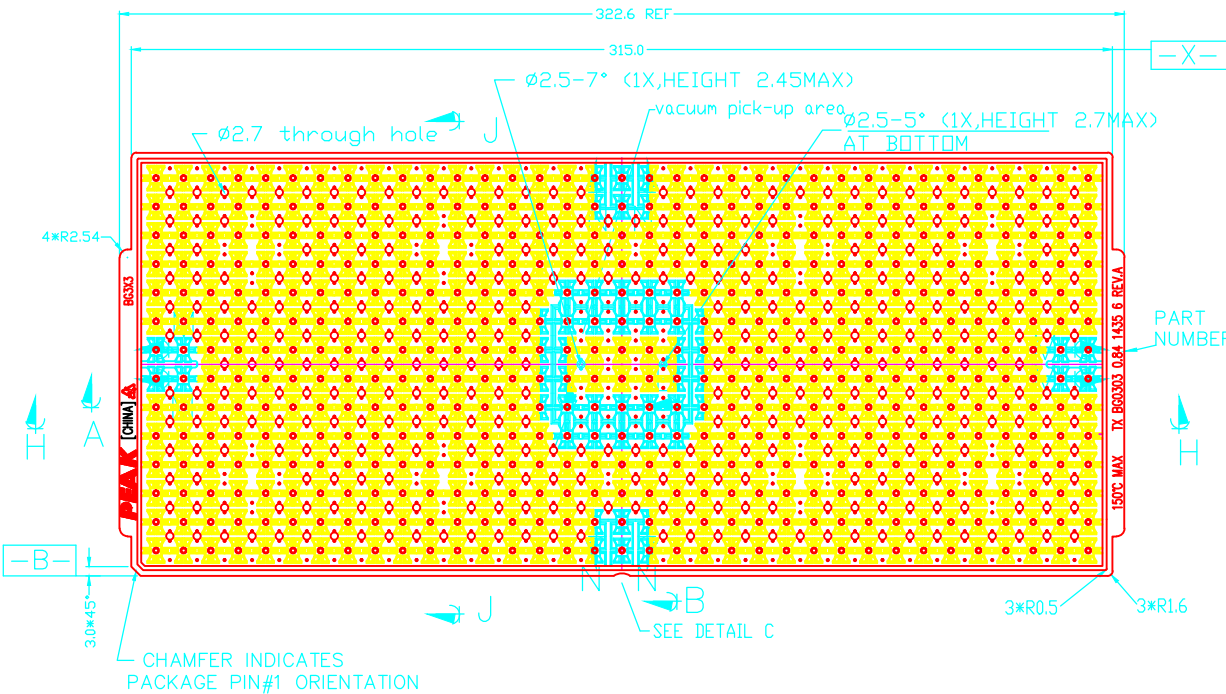
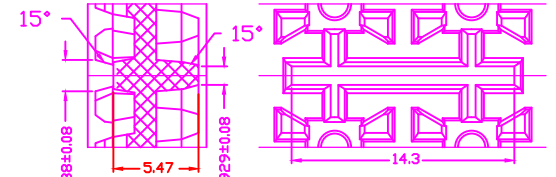


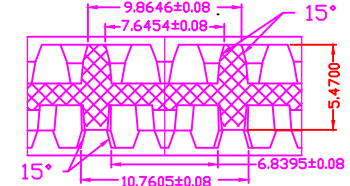
REVISIONS						
PAGE	ZONE	REV	ECN	DESCRIPTION	DATE	APPROVED
1	-	**	2756252	NEW RELEASE	08/27/09	QJV
1&2	-	*A	3613244	RE-SCALE DIMENSIONS AND MEASUREMENTS FOR READABILITY.	05/10/12	COPI
1&2	-	*B	3741209	SUNSET REVIEW NO CHANGE	09/11/12	XVC



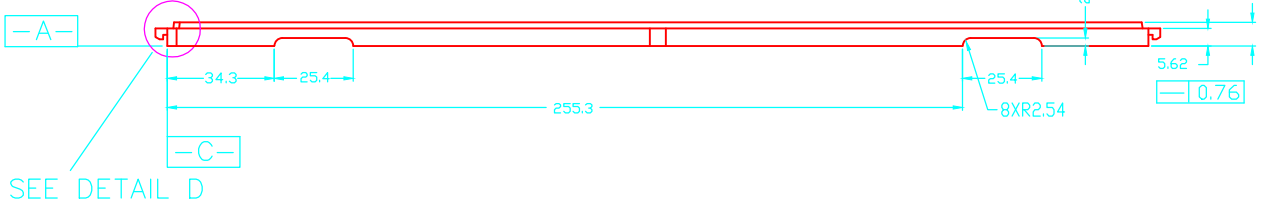
SECTION M-M bottom view for interlock



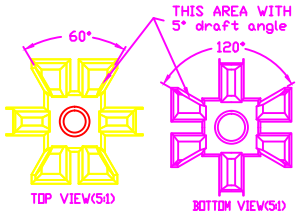
SECTION N-N



bottom view for interlock



SEE DETAIL D

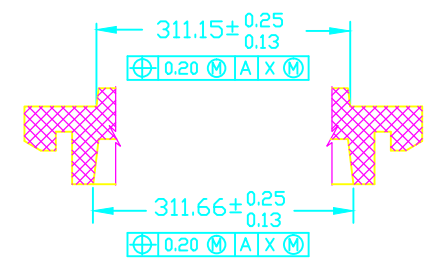
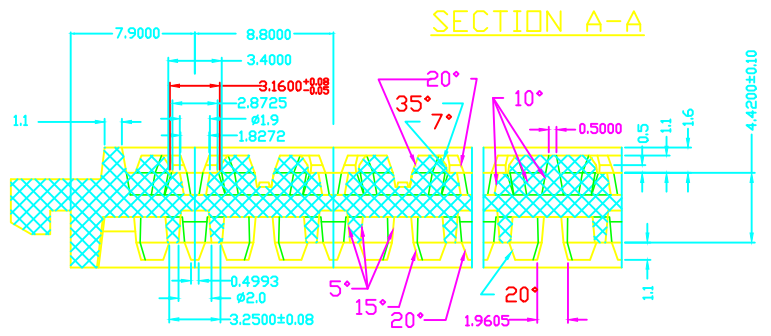


NOTES :

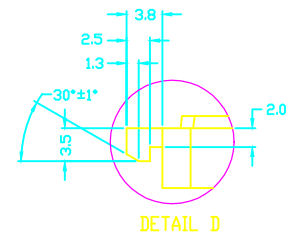
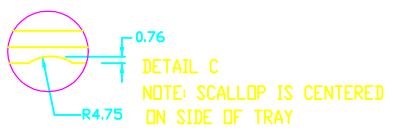
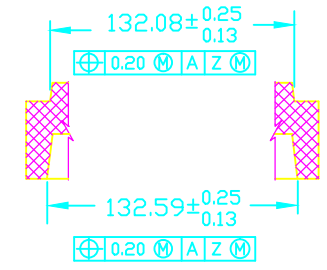
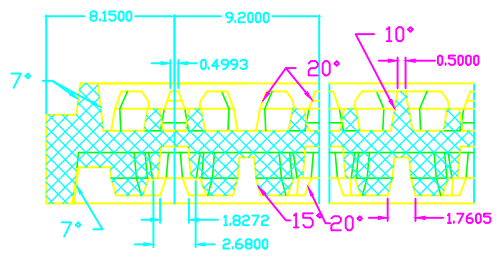
- ESD - SURFACE RESISTIVITY -  $10^5$  TO  $10^{11}$  OHMS/SQ.
- DATECODE AT TRAY BOTTOM SIDE.

UNLESS OTHERWISE SPECIFIED		DESIGNED BY	DATE	CYPRESS Company Confidential
ALL DIMENSIONS ARE IN MILLIMETERS STANDARD TOLERANCES ON:		NA	09/12/12	
DECIMALS	ANGLES	DRAWN BY	DATE	TITLE TRAY, 16L QFN 3X3X0.6MM (PEAK)
X.X ± 0.25		XVC	09/12/12	
X.XX ± 0.13		CHECKED BY	DATE	
X.XXX ±		ZJL	09/12/12	SIZE A
		APPROVED BY	DATE	PART NO. TLF3X3
		QAD	09/12/12	DWG NO 001-55305
MATERIAL	N/A	APPROVED BY	DATE	REV *B
FINISH	N/A	KGL	09/12/12	SCALED TO FIT N/A
		APPROVED BY	DATE	SHEET 1 OF 2

THIS DRAWING CONTAINS INFORMATION WHICH IS THE PROPRIETARY PROPERTY OF CYPRESS SEMICONDUCTOR CORPORATION. THIS DRAWING IS RECEIVED IN CONFIDENCE AND ITS CONTENTS MAY NOT BE DISCLOSED WITHOUT WRITTEN CONSENT OF CYPRESS SEMICONDUCTOR CORPORATION.



SECTION B-B



UNLESS OTHERWISE SPECIFIED ALL DIMENSIONS ARE IN MILLIMETERS STANDARD TOLERANCES ON: DECIMALS X.X ± 0.25 X.XX ± 0.13 X.XXX ±	DESIGNED BY	NA	DATE							
	DRAWN BY	XVC	DATE					09/12/12		
	CHECKED BY	ZJL	DATE					09/12/12		
	APPROVED BY	QAD	DATE					09/12/12		
MATERIAL	N/A	APPROVED BY	KGL	DATE	09/12/12	TITLE		TRAY, 16L QFN 3X3X0.6MM (PEAK)		
FINISH	N/A	APPROVED BY		DATE		SIZE	PART NO.	DWG NO.	REV	
						A	TLF3X3	001-55305	*B	
						SCALED TO FIT	N/A		SHEET 2 of 2	

THIS DRAWING CONTAINS INFORMATION WHICH IS THE PROPRIETARY PROPERTY OF CYPRESS SEMICONDUCTOR CORPORATION. THIS DRAWING IS RECEIVED IN CONFIDENCE AND ITS CONTENTS MAY NOT BE DISCLOSED WITHOUT WRITTEN CONSENT OF CYPRESS SEMICONDUCTOR CORPORATION.